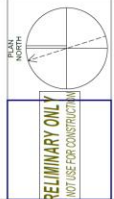




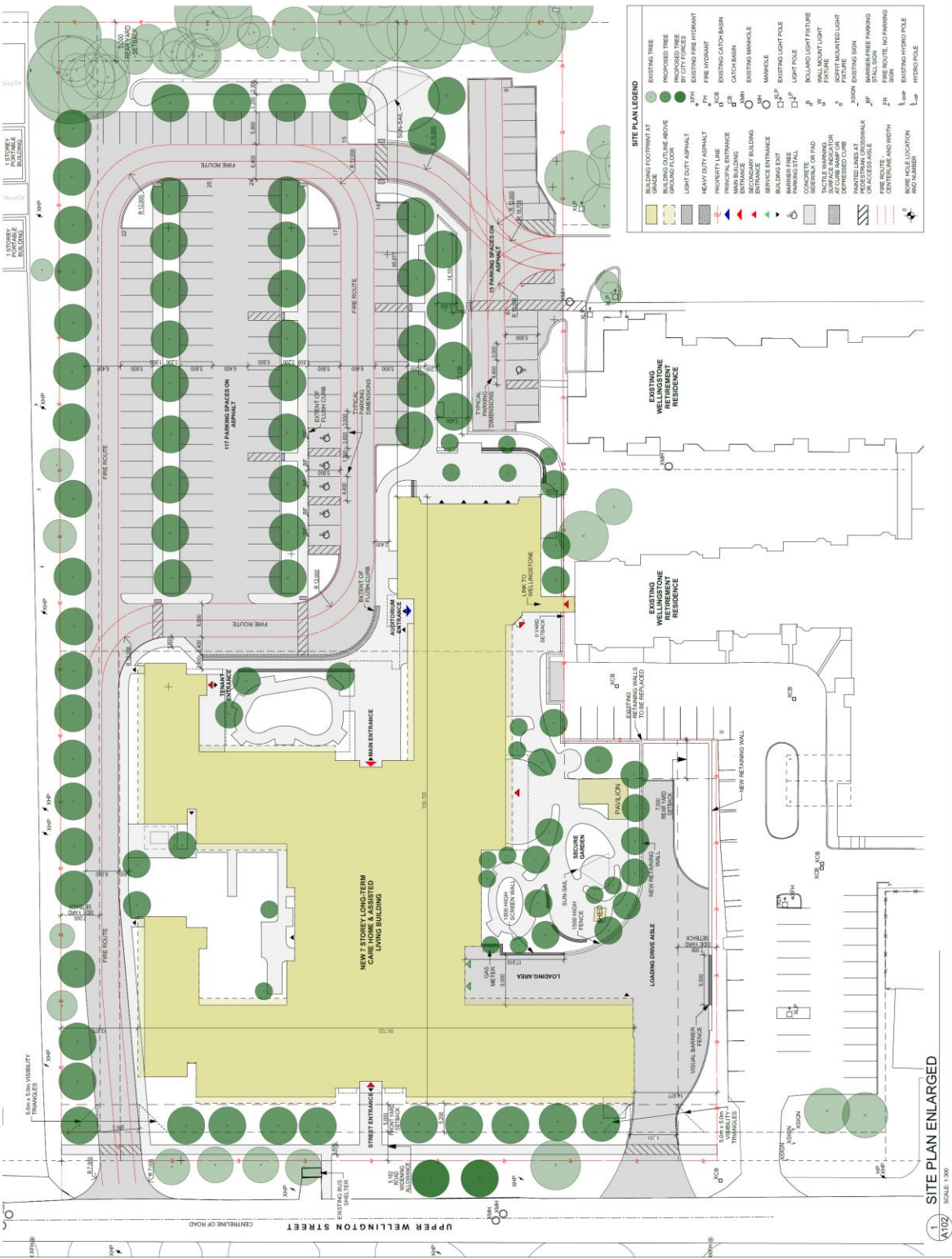
Revisions to Drawing

No.	Date	By
1	21/03/20	CR
2	21/03/20	CR
3	21/03/20	CR
4	21/03/20	CR

MMMC ARCHITECTS
Registered Office:
110 York Street, Suite 1100, Hamilton, Ontario L8N 2K2
www.mmc.ca



SHALOM MANOR HAMILTON
CAMPUS OF CARE
1411 AND 1415 UPPER WELLINGTON STREET
Hamilton, Ontario
Project No.: 2001
Drawing No.: A102



1 SITE PLAN ENLARGED
SCALE 1:300