



300 Highway 60, Suite 100
 Mississauga, Ontario L4W 1M9
 Tel: 905.276.8141
 Fax: 905.276.8142
 www.stantec.com

Stantec



Legal Description
 Part 21, Plan 629-1/MS3
 Part 22, Plan 629-1/MS3
 Part 7, Plan 629-1/MS3

Map Information
 Date: 17/11/2017
 Author: [Name]
 Checker: [Name]

Project Information
 Project Name: LEA SILVESTRI INVESTMENTS
 Client: LEA SILVESTRI INVESTMENTS
 Address: 140 GARNER ROAD EAST SUBDIVISION
 City: MISSISSAUGA, ONTARIO

Block No.	Block Name	Area (sq. m)	Area (sq. ft)
1	Block 1	1,234.56	13,245.67
2	Block 2	2,345.67	25,234.56
3	Block 3	3,456.78	37,123.45
4	Block 4	4,567.89	49,012.34
5	Block 5	5,678.90	60,901.23
6	Block 6	6,789.01	72,790.12
7	Block 7	7,890.12	84,679.01
8	Block 8	8,901.23	96,568.90
9	Block 9	9,012.34	97,457.79
10	Block 10	10,123.45	109,346.68
11	Block 11	11,234.56	121,235.57
12	Block 12	12,345.67	133,124.46
13	Block 13	13,456.78	145,013.35
14	Block 14	14,567.89	156,902.24
15	Block 15	15,678.90	168,791.13
16	Block 16	16,789.01	180,680.02
17	Block 17	17,890.12	192,568.91
18	Block 18	18,901.23	204,457.80
19	Block 19	19,012.34	206,346.69
20	Block 20	20,123.45	218,235.58

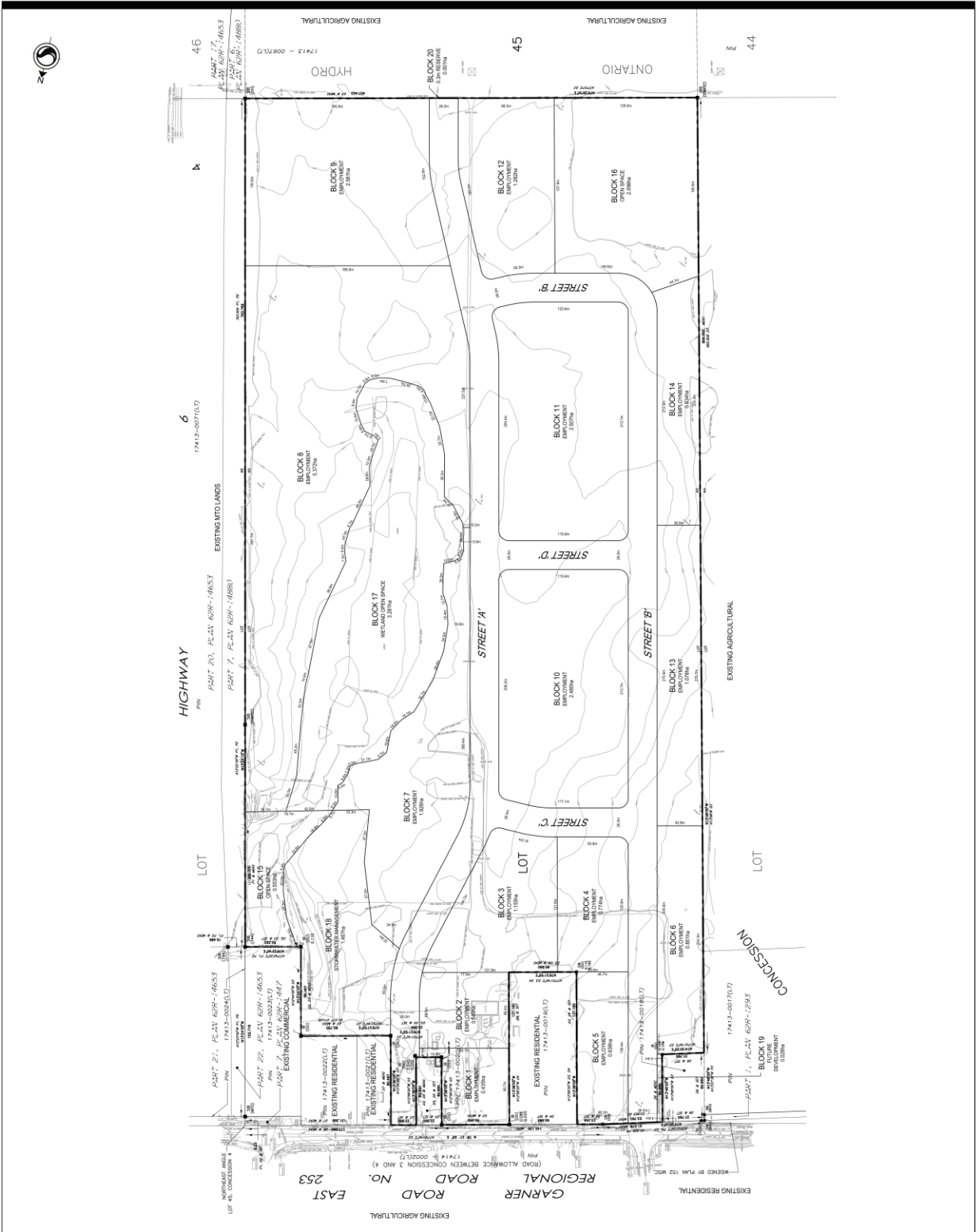
Notes
 1. All dimensions are in meters unless otherwise specified.
 2. The area of the subject property is 20,123.45 square meters.
 3. The total area of the subdivision is 1,234,567.89 square meters.

Client/Project
 LEA SILVESTRI INVESTMENTS
 140 GARNER ROAD EAST SUBDIVISION
 MISSISSAUGA, ONTARIO

Permit/Scale
 Scale: 1:1000
 Date: 17/11/2017

Project No. 16031401
Sheet 1 of 1
Revision 0

DRAFT PLAN OF SUBDIVISION



DP-100
 1 of 1
 0