

Project Details

Project Boundary: King St to Main St

Funding Source: ICIP - AT Connections

Phase: Planning

Project Length: 450m

Ward: 1

CMP #: NA

Key Map



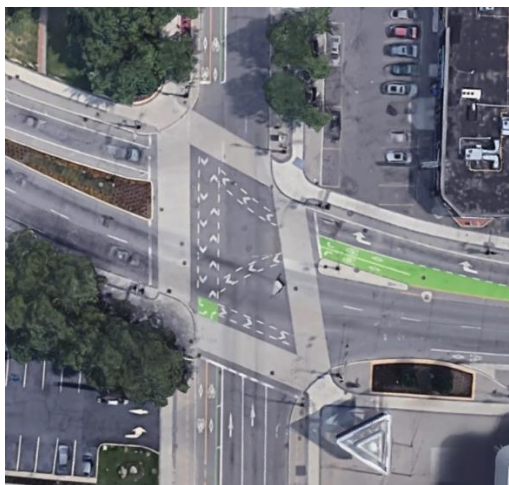
Description

Redesign existing unidirectional bicycle lanes and on-street parking (east side) to a bi-directional cycle track on the east side of Longwood Rd, with on-street parking relocated to the west side.

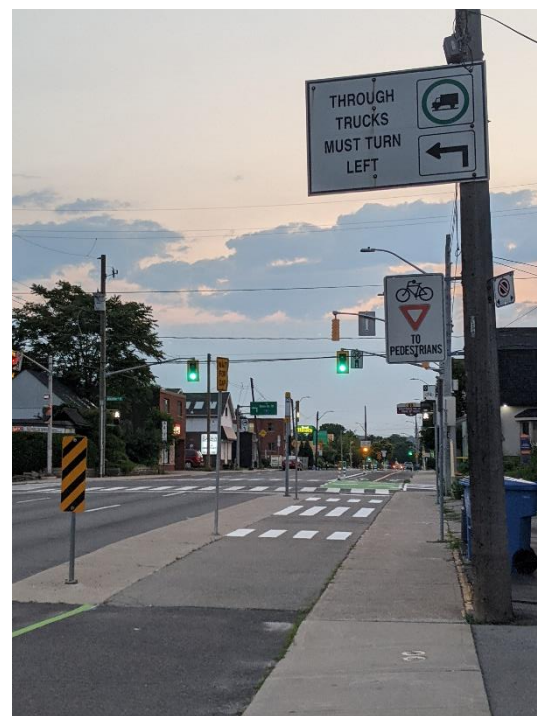
Precedent Images and Visualizations



Hunter St, Hamilton
Flexposts and precast curbs



Bay St @ York Blvd
Intersection pavement
markings



King St @ Macklin St, Hamilton
Raised bus platform

Potential Impacts

| HSR Route/Area | Impacts |
|----------------|------------------------------------------------------------|
| 1 (King) | Minimal impact anticipated (SB service only) |
| 5 (Delaware) | Minimal impact anticipated (SB service only) |
| 6 (Aberdeen) | Integration of bus stops on the east side with cycle track |

Parking Review

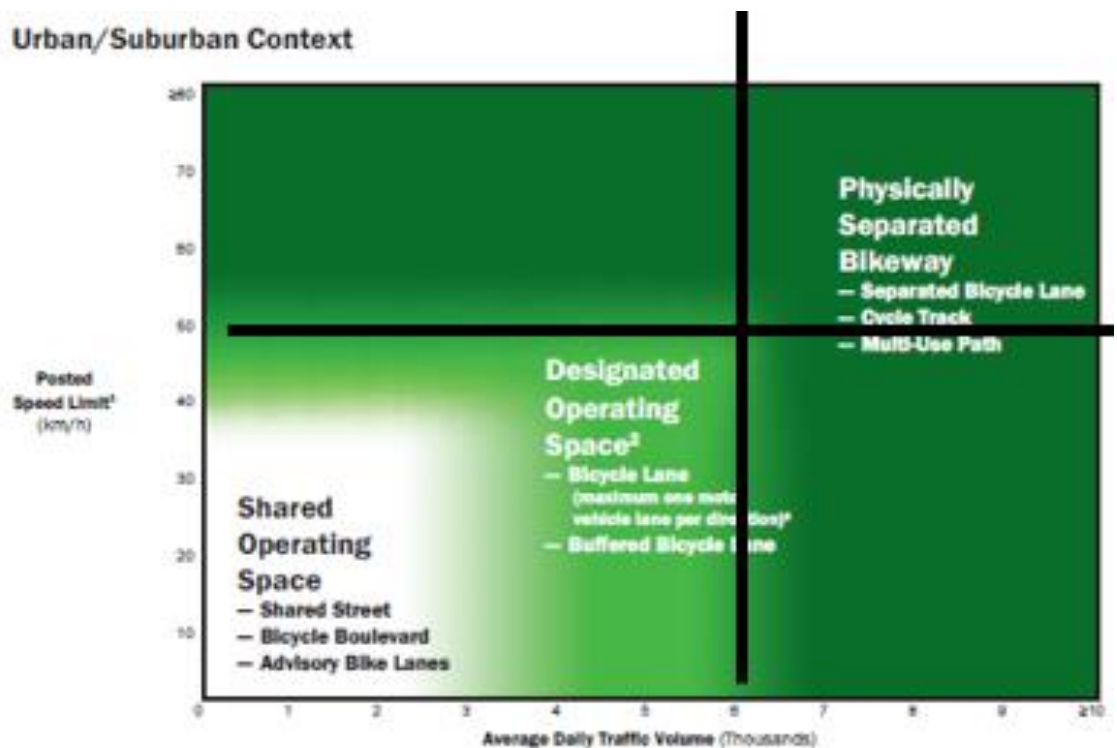
Existing on-street parking between King St and Marion Ave to be relocated to the west side. Reduced parking capacity is expected due to driveways on the west side, as insufficient width to have on-street parking beside the cycle track on the east side of the street due to the width required for door swings.

Rationale

This segment connects the Kirkendall neighbourhood and McMaster Innovation Park to Westdale and the University, making it an important link to the west end. This segment is part of a longer linkage on Longwood Rd south of Main St to Aberdeen Ave, all planned along the east side of the street.

According to the cycling facilities nomograph (OTM Book 18) and the complete streets audit tool, this connector street should have a designated cycling operating space, which will be marked with painted buffers.

Cycling Facilities Nomograph Alignment



Strategic Alignment

Capital Plan

Longwood Rd is not planned for capital works within the next 5 years within this segment. Marion Ave is planned for construction works in 2022 between Longwood Rd and King St. It has been noted that the existing PXO on Longwood Rd @ Marion Ave will see some modifications to the existing location (switch to north side) and PXO type. The high school driveway will be shifted southerly to align with the intersection.

Transportation Master Plan

Action 15 - As part of the implementation of the cycling network, undertake an evaluation of altern alternatives in order to select routes which maximize safety for cyclists and promote continuity of the network across the City

Sustainable Mobility KPI's and Cycling Master Plan

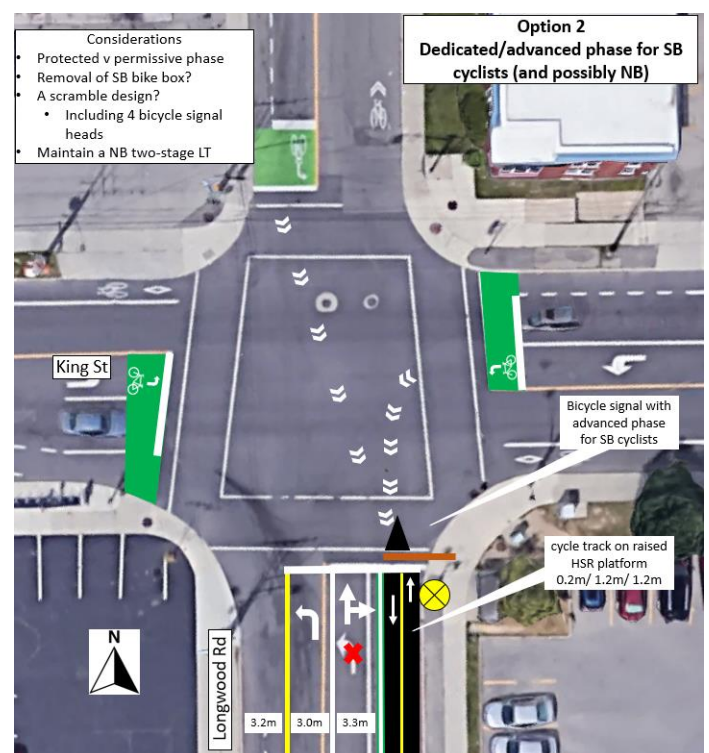
Increase kilometers of cycling infrastructure

Facilitate pandemic response through active transportation

Detailed Maps



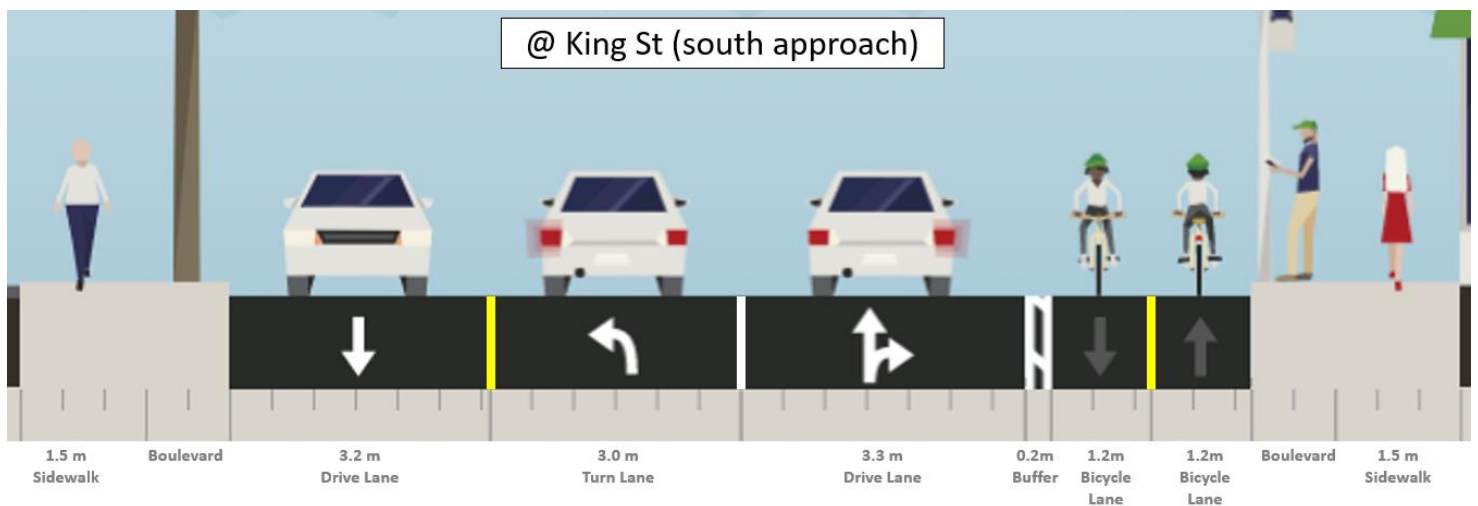
NOTE: King St intersection concepts need further evaluation and are subject to change/modifications



Detailed Maps

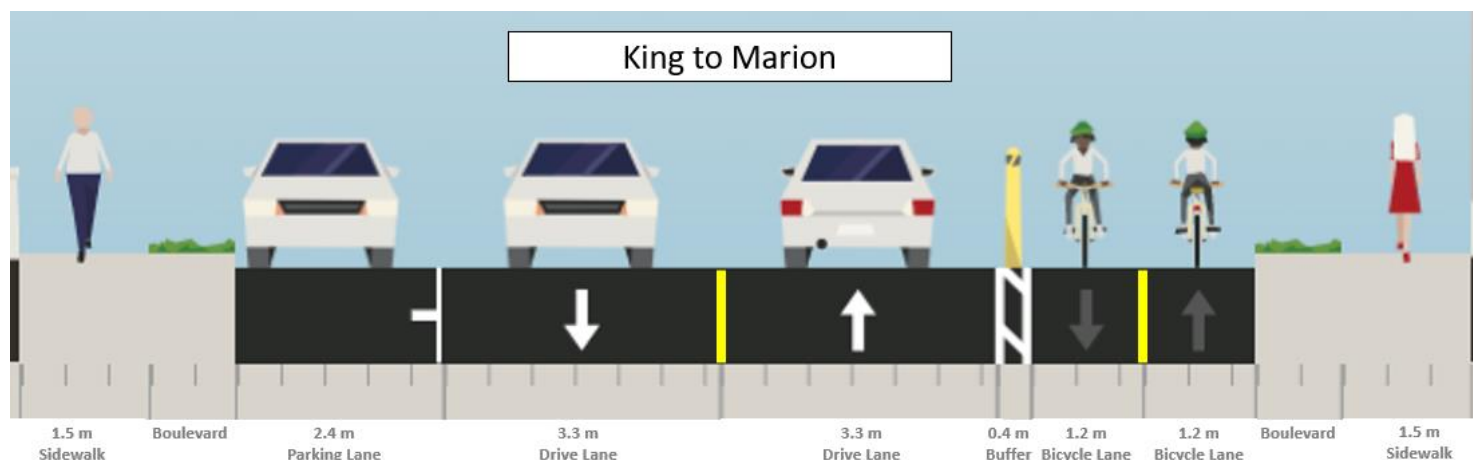


Cross Section Details

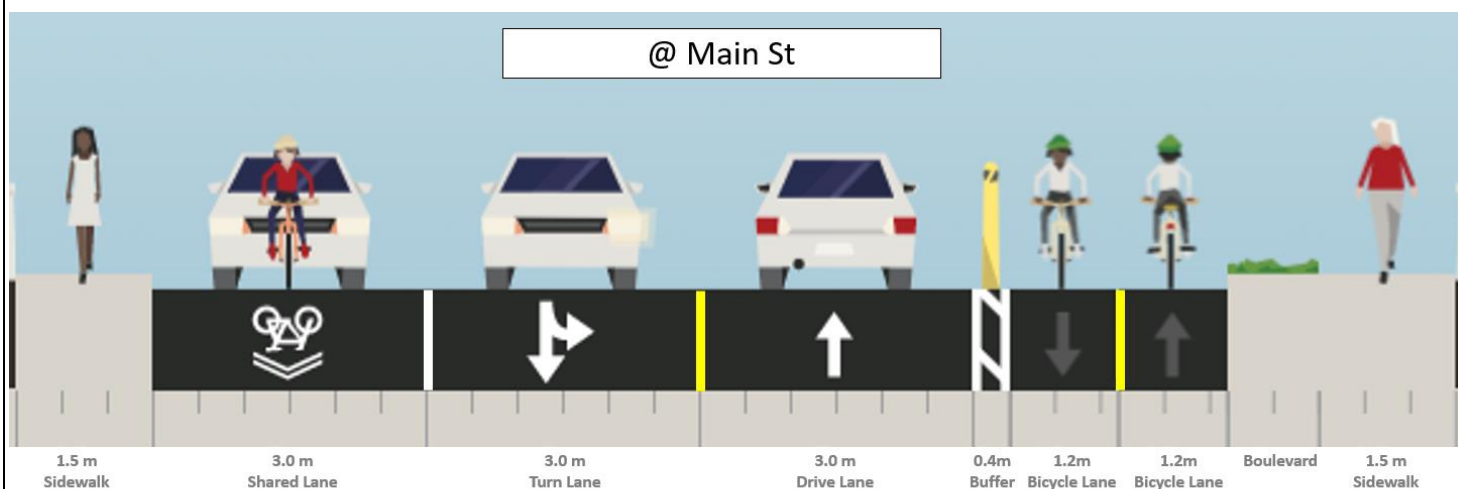


Bi-directional cycle track on the east side

Cross Section Details



Bi-directional cycle track on the east side; on-street parking on the west side



Bi-directional cycle track on the east side; shared thru/right lane on west side

Project Contacts

Project Feasibility and Outreach

Danny Pimentel, Project Manager: danny.pimentel@hamilton.ca

Project Design and Implementation

Bakir Fayad, Project Manager: bakir.fayad@hamilton.ca