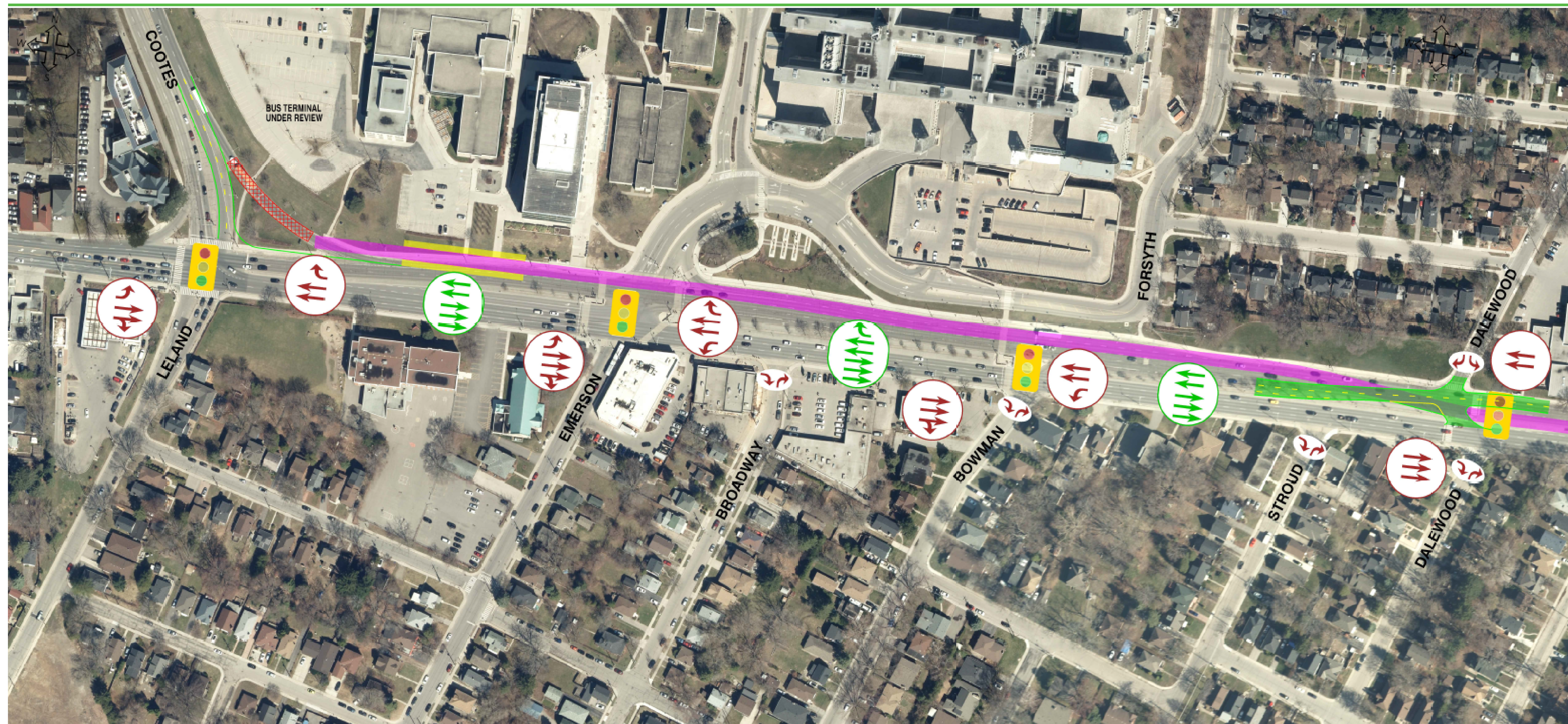


Ward 1 MAIN ST (Cootes Drive to Dalewood Crescent)



Highlights:

- Guideway is Side Running west of Dalewood Crescent
- Guideway is Centre Running east of Dalewood Crescent
- McMaster Stop adjacent to north sidewalk to provide convenient connectivity to Campus (Dual LRT Platforms)

- Note: Illustrations are representative of the Corridor Design in 2019 and are subject to further revision.



Ward 1 MAIN ST (Dalewood Crescent to Paisley Avenue)



Highlights:

- Guideway is Side Running west of Dalewood Crescent
- Guideway is Centre Running east of Dalewood Crescent

- Note: Illustrations are representative of the Corridor Design in 2019 and are subject to further revision.



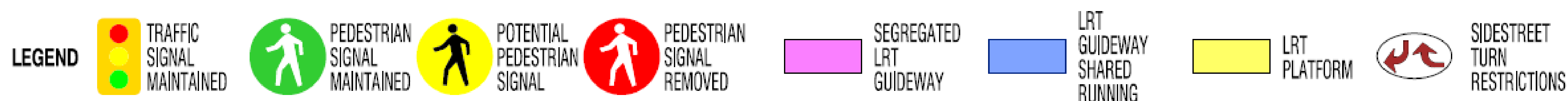
Ward 1 MAIN ST (Paisley Avenue to Macklin Street)



Highlights:

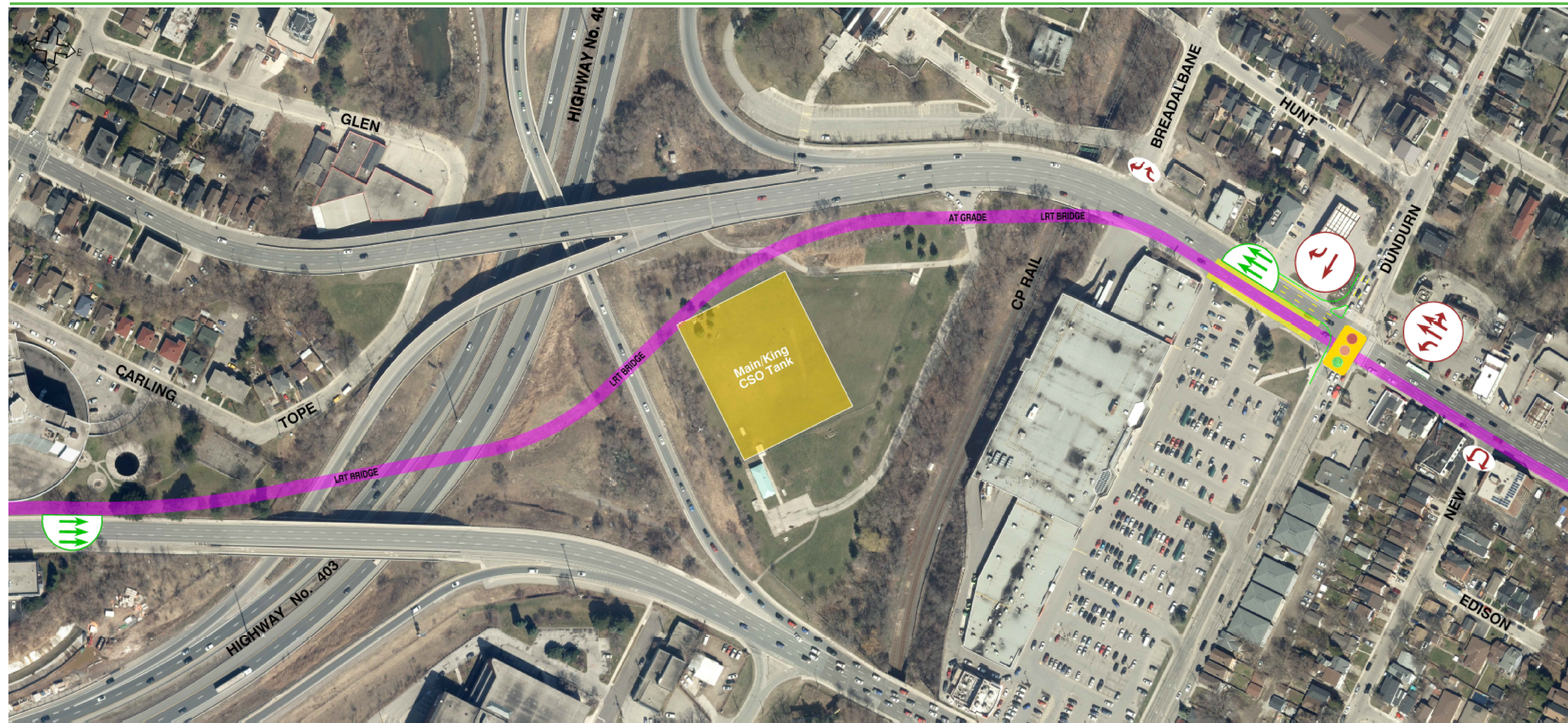
- Reconstruction of the Longwood Road Bridge
- Guideway is Centre Running west of Paradise Road
- Single Platform at Longwood Road
- Guideway is either Side Running or on LRT Only Bridge east of Paradise Road
- Intersection of Paradise Road and Main Street changed to a T-intersection

- Note: Illustrations are representative of the Corridor Design in 2019 and are subject to further revision.





Ward 1 LRT ONLY BRIDGE (Across Highway No.403)



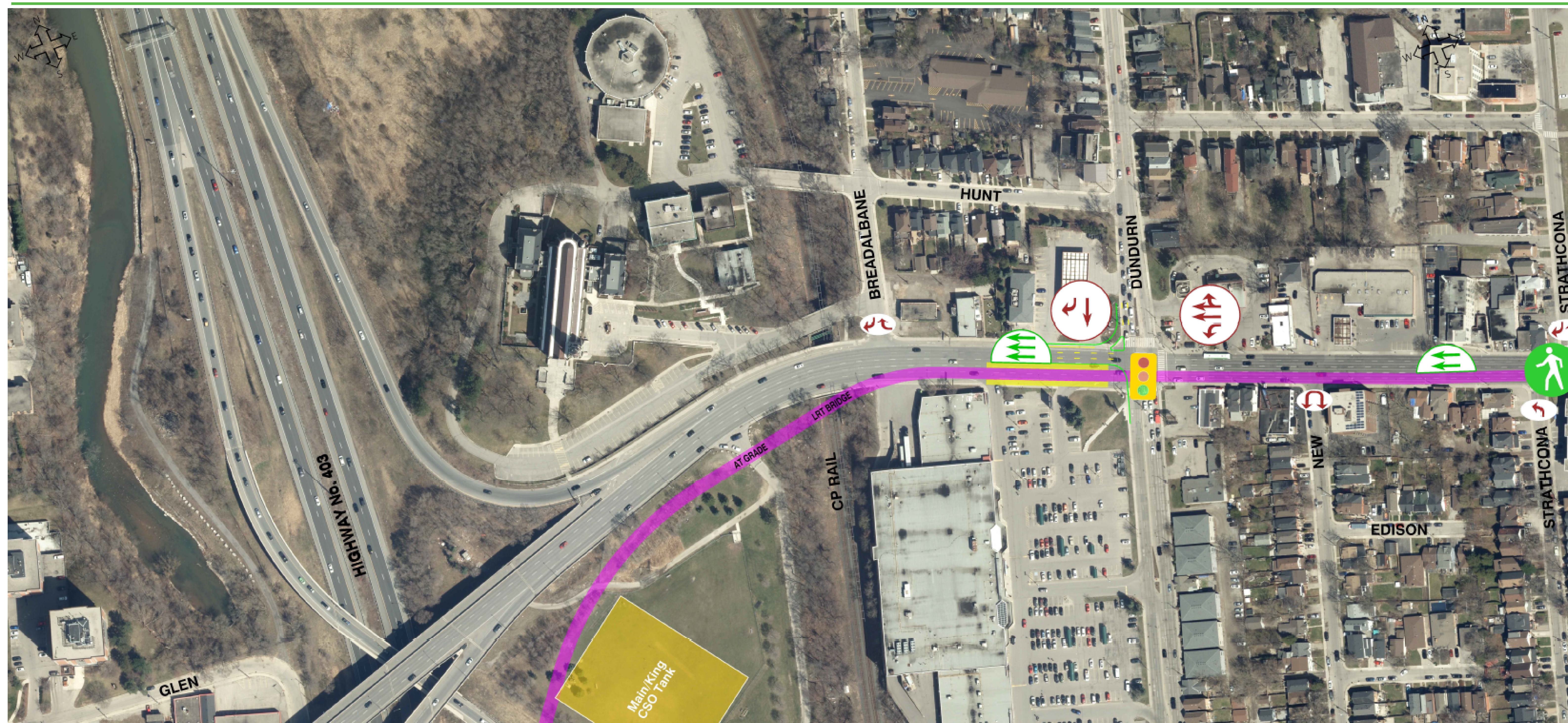
Highlights:

- LRT Bridge with a Track in each direction
- Emergency Vehicles use of Bridge limited to incidents on the Bridge
- Access to Dog Park limited to Pedestrians and City Maintenance Vehicles

- Note: Illustrations are representative of the Corridor Design in 2019 and are subject to further revision.



Ward 1 KING STREET (Highway No.403 to Strathcona Avenue)



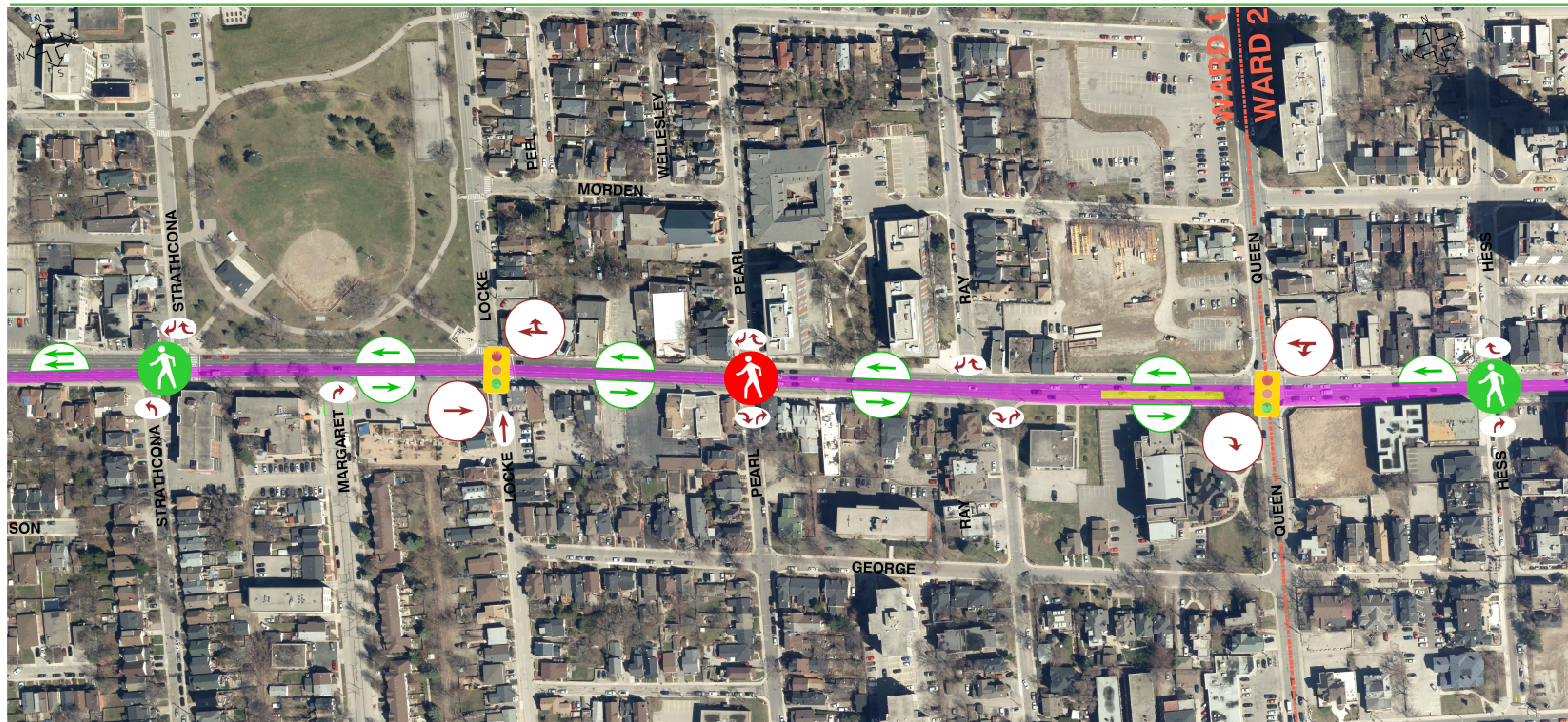
Highlights:

- Guideway is Centre Running east of Breadalbane
- Dundurn LRT Stop adjacent to south sidewalk to provide convenient connectivity to Plaza (Dual Platforms)

- Note: Illustrations are representative of the Corridor Design in 2019 and are subject to further revision.



Wards 1 and 2 KING STREET (Strathcona Avenue to Hess Street)



Highlights:

- Guideway is Centre Running
- Single Centre LRT Platform at Queen St

- Note: Illustrations are representative of the Corridor Design in 2019 and are subject to further revision.



Ward 2 KING STREET (Hess Street to James Street)



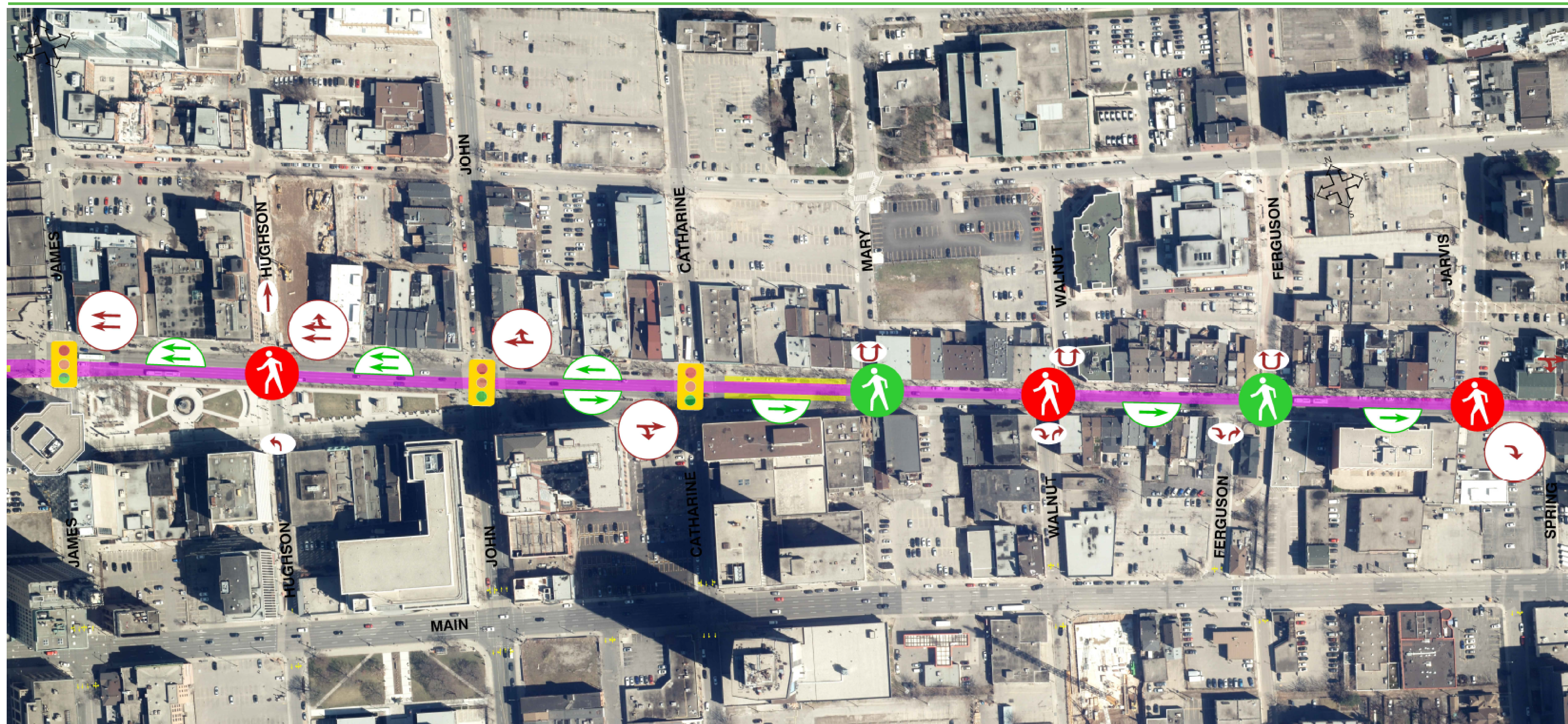
Highlights:

- Guideway is Centre Running
- Single LRT Side Platform at James St

- Note: Illustrations are representative of the Corridor Design in 2019 and are subject to further revision.



Ward 2 KING STREET (James Street to Jarvis Street)



Highlights:

- Guideway is Side Running (North Side) from Spring St to Catharine St
One Eastbound Vehicular lane
- Guideway is Centre Running from Catharine St to John St
One Eastbound and One Westbound Vehicular lane
- Guideway is Side Running (South Side) from John St to Bay St
Two Westbound Vehicular lanes
- Alleyway (North Side) Wellington to Catharine used by Service Vehicles

- Note: Illustrations are representative of the Corridor Design in 2019 and are subject to further revision.



Wards 2 and 3 KING STREET (Jarvis Street to Steven Street)



Highlights:

- No Westbound access to International Village and Downtown Core at Wellington St
- Guideway is Side Running (North Side) from Spring St to Catharine St with One Eastbound Vehicular lane
- Guideway is Centre Running east of Wellington
- Two LRT Platforms at Wellington St

- Note: Illustrations are representative of the Corridor Design in 2019 and are subject to further revision.



Ward 3 KING STREET (Steven Street to Fairleigh Avenue)



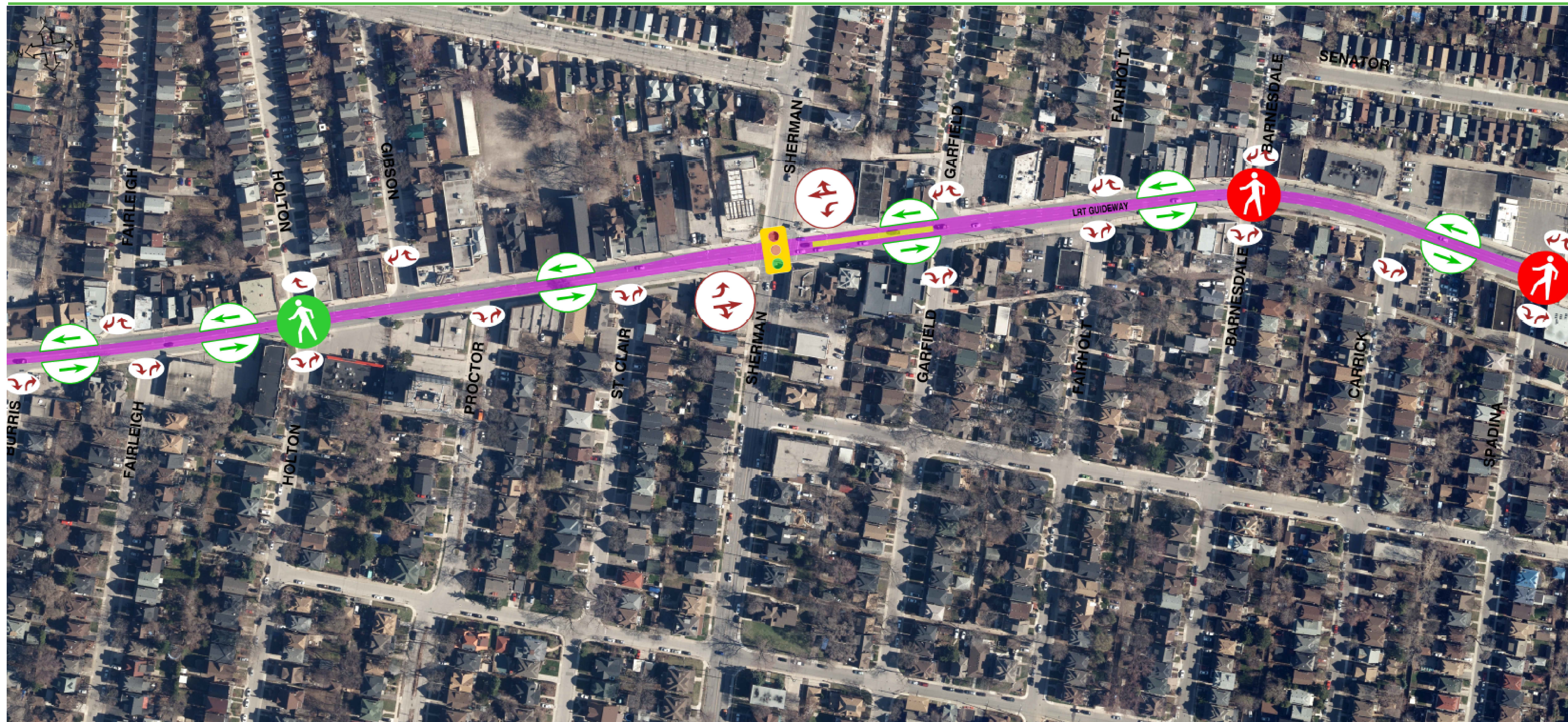
Highlights:

- Guideway is Centre Running
- Single LRT Platform at Wentworth St

- Note: Illustrations are representative of the Corridor Design in 2019 and are subject to further revision.



Ward 3 KING STREET (Fairleigh Avenue to Spadina Avenue)



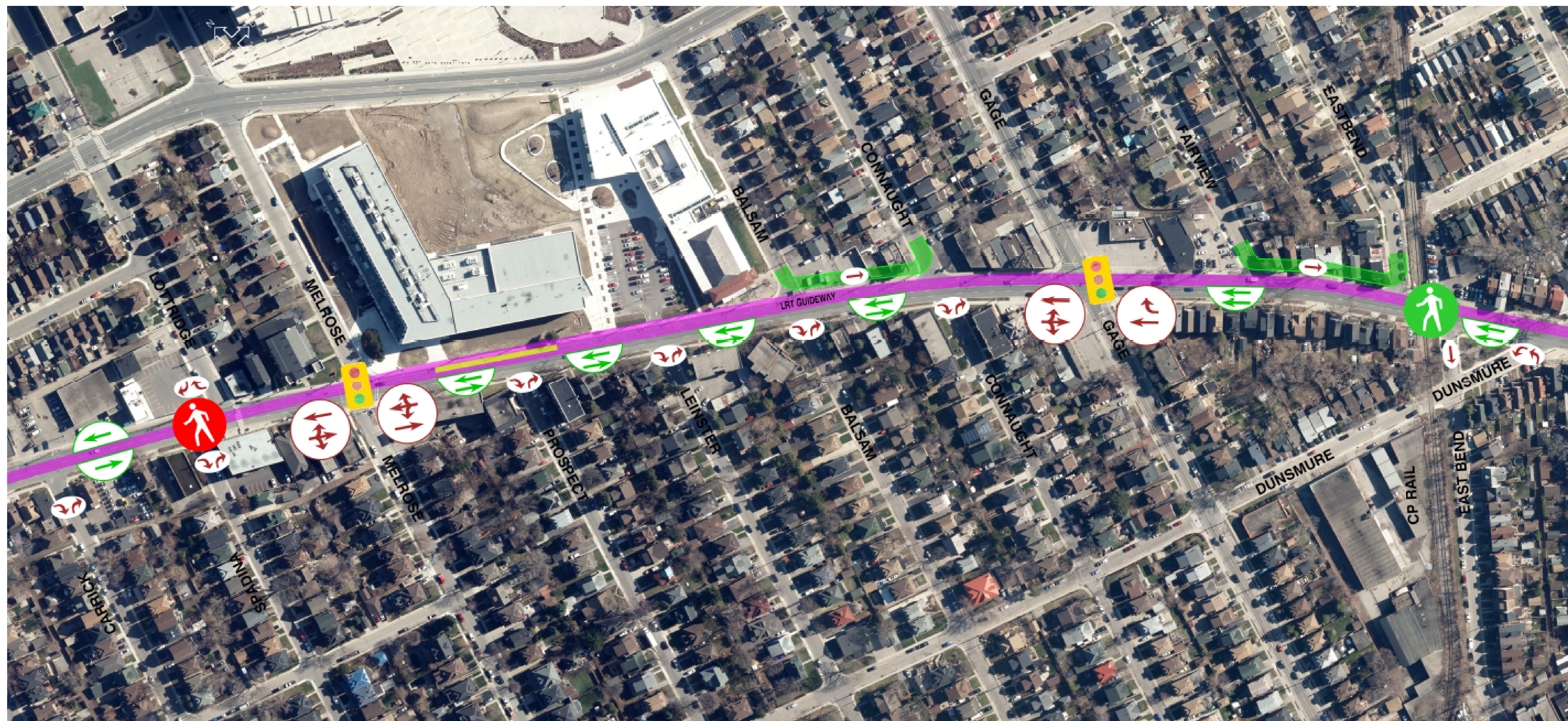
Highlights:

- Guideway is Centre Running
- Single Centre LRT Platform at Sherman Ave

- Note: Illustrations are representative of the Corridor Design in 2019 and are subject to further revision.



Ward 3 KING STREET (Spadina Avenue to East Bend Avenue)



Highlights:

- Guideway is Side Running (North Side) from The Delta to Gage Ave with Two Westbound Vehicular lanes
- Guideway is Side Running (North Side) from Gage Ave to Melrose Ave with One Westbound and One Eastbound Vehicular lane
- Single LRT Platform at Scott Park
- Scott Park adjacent to the north sidewalk provides convenient connectivity to School, Recreation Center, Pool and Tim Hortons Field

- Note: Illustrations are representative of the Corridor Design in 2019 and are subject to further revision.



Ward 3 KING STREET (East Bend Avenue to The Delta)



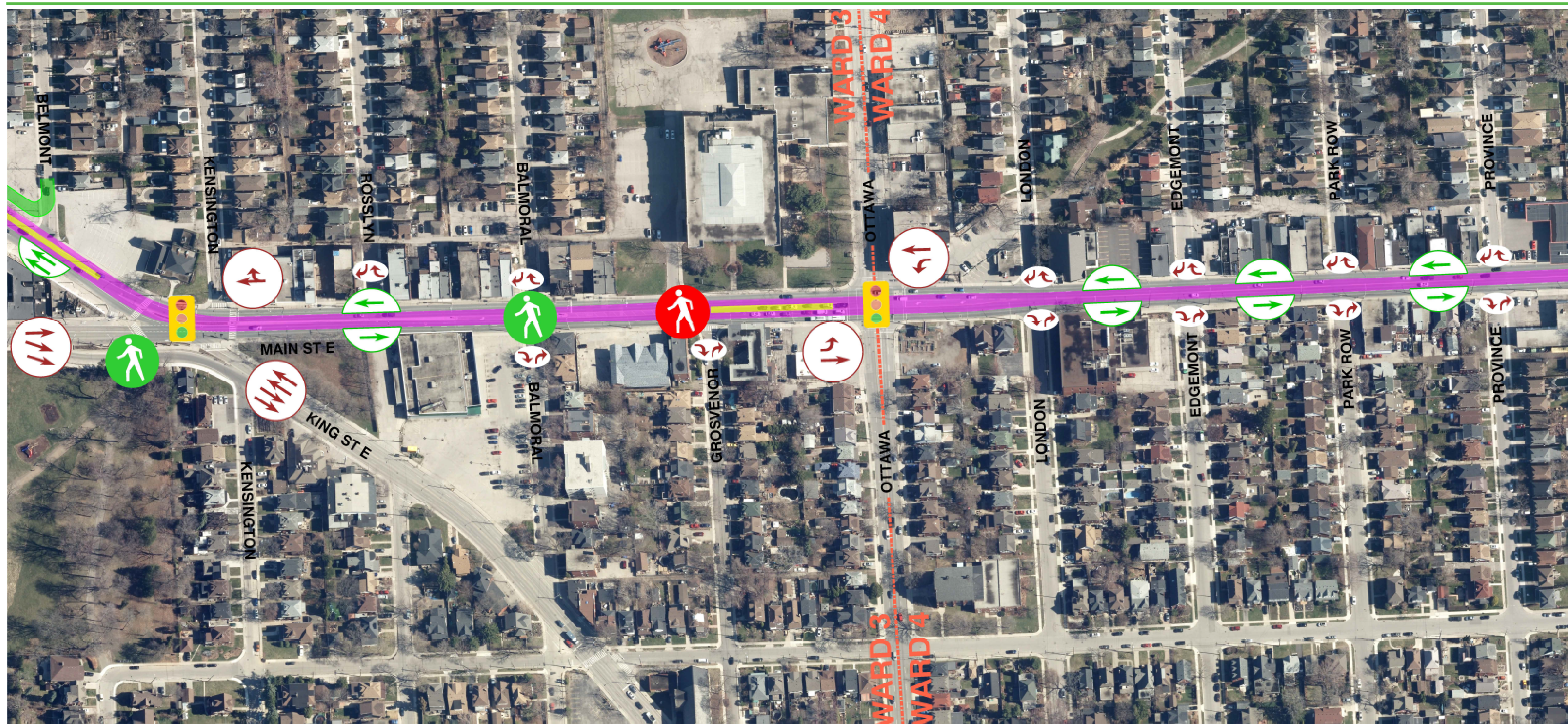
Highlights:

- Guideway is Side Running (North Side) from The Delta to Gage Ave with Two Westbound Vehicular Lanes
- Guideway is Centre Running from The Delta easterly
- Single LRT Platform at Gage Park
- Connector Road between Belview/Belmont north of Guideway

- Note: Illustrations are representative of the Corridor Design in 2019 and are subject to further revision.



Wards 3 and 4 MAIN STREET (The Delta to Province Street)



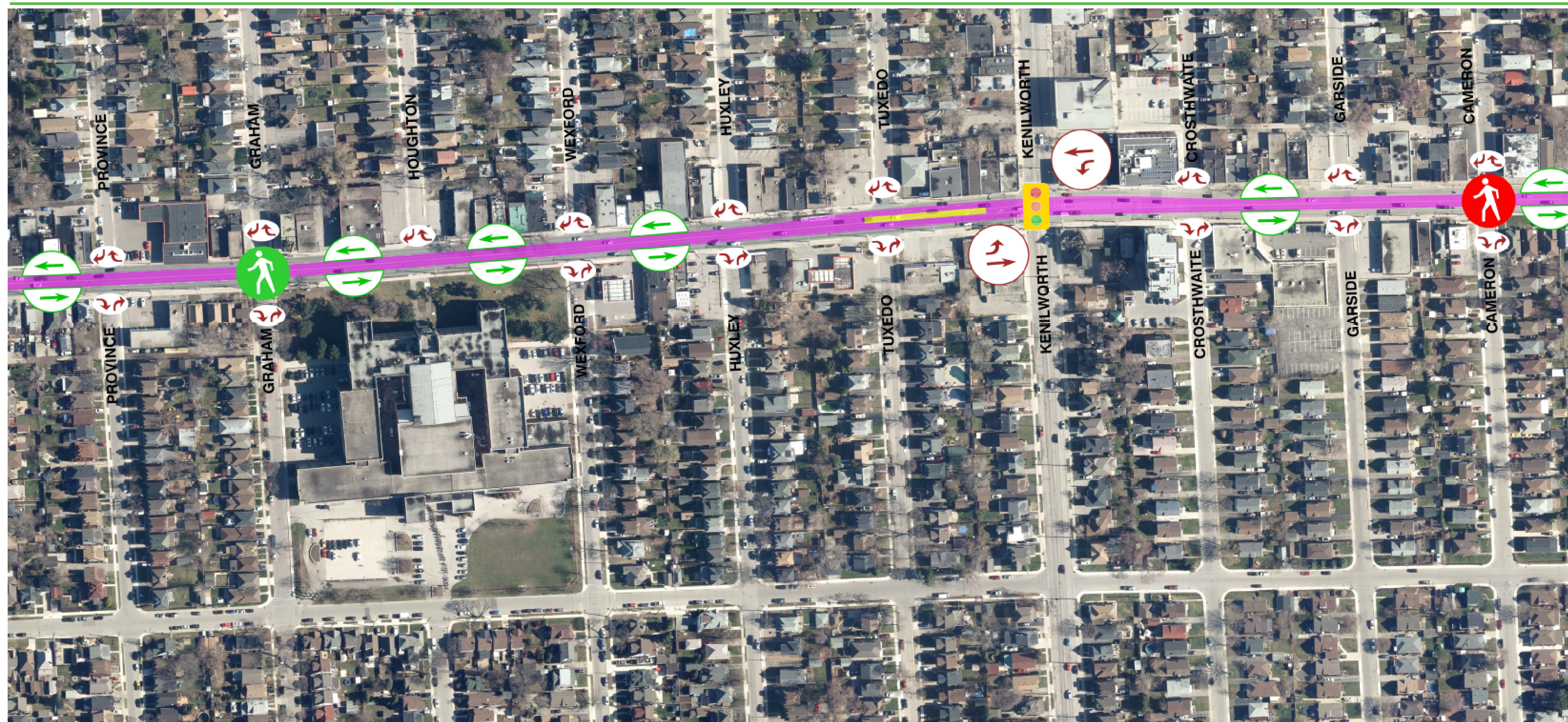
Highlights:

- Guideway is Centre Running from The Delta easterly
- Single Centre LRT Platform at Gage Park
- Single Centre LRT Platform at Ottawa St

- Note: Illustrations are representative of the Corridor Design in 2019 and are subject to further revision.



Ward 4 MAIN STREET (Province Street to Cameron Avenue)



Highlights:

- Guideway is Centre Running
- Single Centre LRT Platform at Kenilworth Ave

- Note: Illustrations are representative of the Corridor Design in 2019 and are subject to further revision.



Ward 4 MAIN STREET (Cameron Avenue to Rosewood Road)



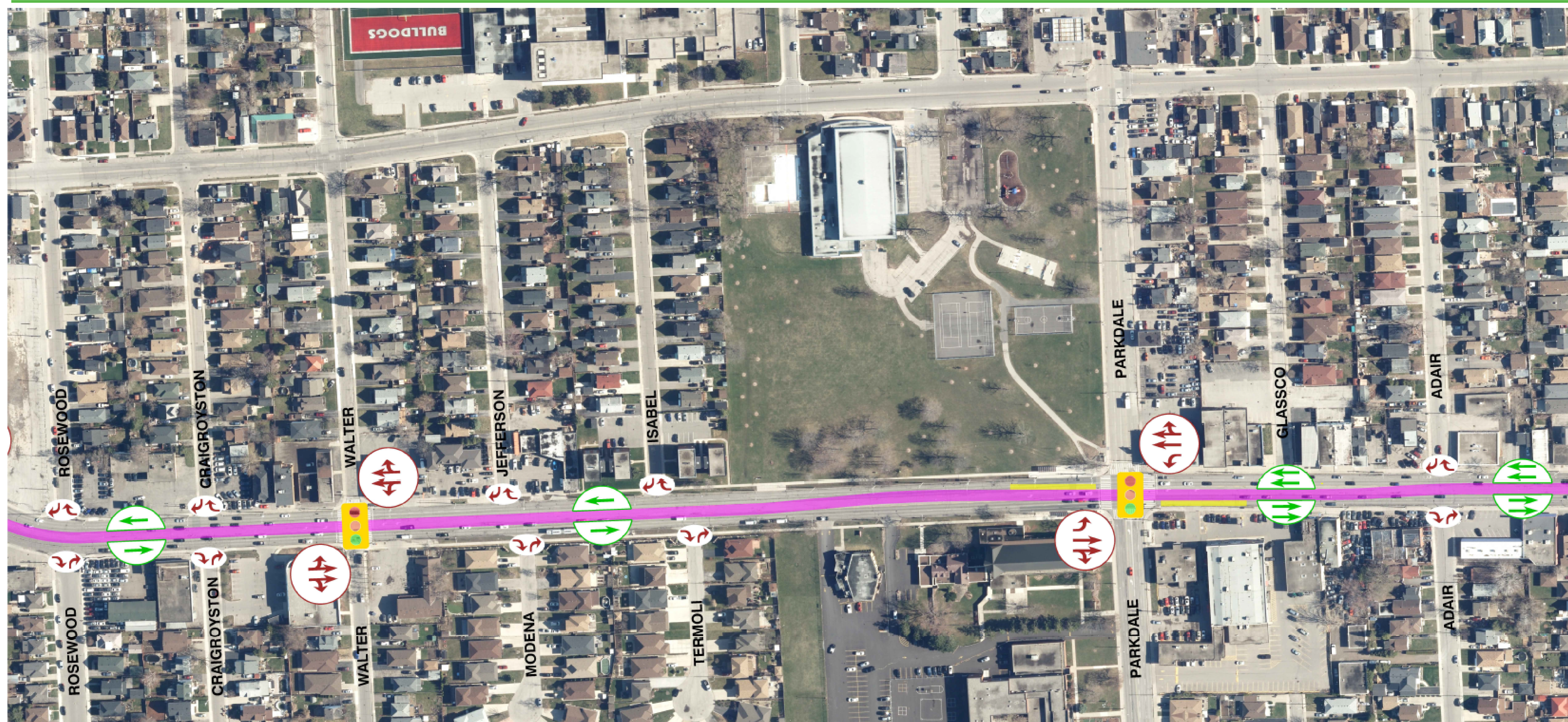
Highlights:

- Guideway is Centre Running
- Dual LRT Platforms at Queenston Traffic Circle
- Conversion of Traffic Circle to a T-intersection

- Note: Illustrations are representative of the Corridor Design in 2019 and are subject to further revision.



Ward 4 QUEENSTON ROAD (Rosewood Road to Adair Avenue)



Highlights:

- Guideway is Centre Running
- Dual Side LRT Platforms at Parkdale
- Two Westbound Vehicular lanes east of Parkdale but One Westbound Vehicular lane west of Parkdale to promote use of Parkdale and Arterial Road System

- Note: Illustrations are representative of the Corridor Design in 2019 and are subject to further revision.



Wards 4 and 5 QUEENSTON ROAD (Adair Avenue to Pottruff Road)



Highlights:

- Guideway is Centre Running

- Note: Illustrations are representative of the Corridor Design in 2019 and are subject to further revision.



Ward 5 QUEENSTON ROAD (Pottruff Road to Nash Road)



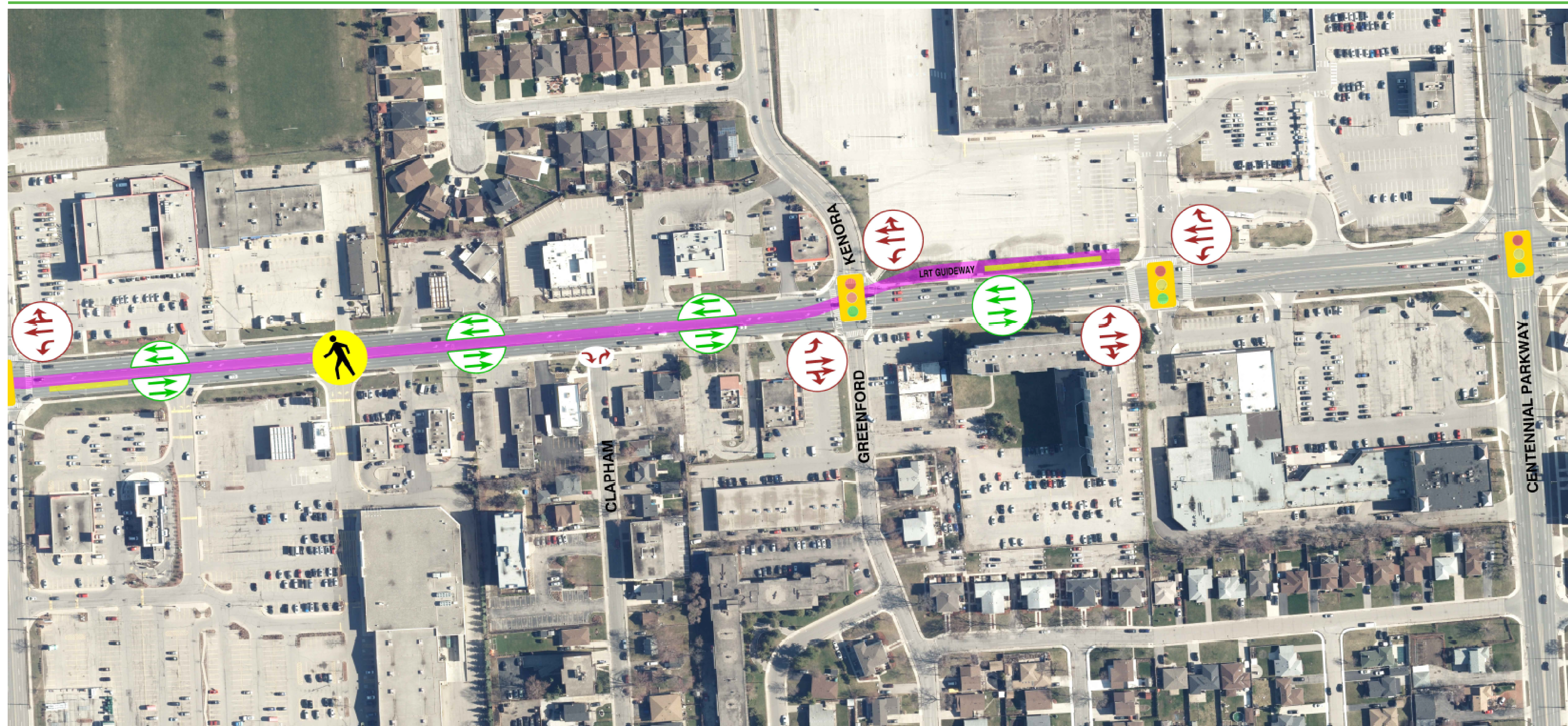
Highlights:

- Guideway is Centre Running
- Dual LRT Platforms at Nash

- Note: Illustrations are representative of the Corridor Design in 2019 and are subject to further revision.



Ward 5 QUEENSTON ROAD (Nash Road to Centennial Parkway)



Highlights:

- Guideway is Centre Running
- Single Centre LRT Platform at Eastgate Square
- Eastgate Square LRT Stop adjacent to north sidewalk to provide convenient connectivity to Mall

- Note: Illustrations are representative of the Corridor Design in 2019 and are subject to further revision.

