

Site Plan A1.2
1 : 300

Proposed Residential Redevelopment
465 James Street North, Hamilton, Ontario

Jamesville Redevelopment Ltd. Partnership

Block A NOT FOR SUBMISSION SHOWN FOR REFERENCE ONLY


Rev.	Description	Date
Rev. 1	Prepared for OPA & Planning	June 7, 2022
Rev. 2	Prepared for OPA & Planning	June 17, 2022
Rev. 3	OPA & Planning Submission	June 20, 2022

KIRKOR ARCHITECTS AND PLANNERS
20 DuBois Dr. #400 Toronto ON M5J 0H1
Tel: 416 866 8866 kirkorarchitects.com

Site Plan A1.2

Scale: As indicated
Client: D.S.
City: M.A.
Project No.: 19-112
Date: June 30, 2021
Drawing No.: A1.2

All drawings, specifications and related documents are the property of Kirkor Architects and Planners. They are to be used only for the project and site for which they are prepared. Any reproduction, distribution or use of these drawings without the written consent of Kirkor Architects and Planners is strictly prohibited. The drawings shall be the property of Kirkor Architects and Planners.

 THER+CURRAN ARCHITECTS INC. 118 JAMES STREET NORTH, SUITE 301, HAMMILL, ONTARIO L8C 2K7 TEL: 905-292-0963		ALL INFORMATION CONTAINED HEREIN IS UNCLASSIFIED AND CONFIDENTIAL. IT IS THE PROPERTY OF THER+CURRAN ARCHITECTS INC. AND IS TO BE USED ONLY FOR THE PROJECT AND FOR THE PURPOSES SPECIFIED IN THE CONTRACT DOCUMENTS. ANY REPRODUCTION OR DISSEMINATION OF THIS INFORMATION WITHOUT THE WRITTEN CONSENT OF THER+CURRAN ARCHITECTS INC. IS STRICTLY PROHIBITED.		4. 2022-03-24 (Issued for OPA & ZBA Submission) 3. 2021-10-08 (Submitted for Review) 2. 2021-08-21 (Issued for Review) 1. 2021-08-21 (Submitted for Review) No. Date Remarks	Jamesville Redevelopment Partnership Limited. Building 'A' Jamesville Redevelopment Submittal 405 James Street North, Hamilton, Ontario	ELEVATIONS Date: _____ Drawn: _____ Check: _____ Scale: As Shown Date: 2022-03-13	A0.4 Drawing No:
---	--	--	--	--	---	---	----------------------------



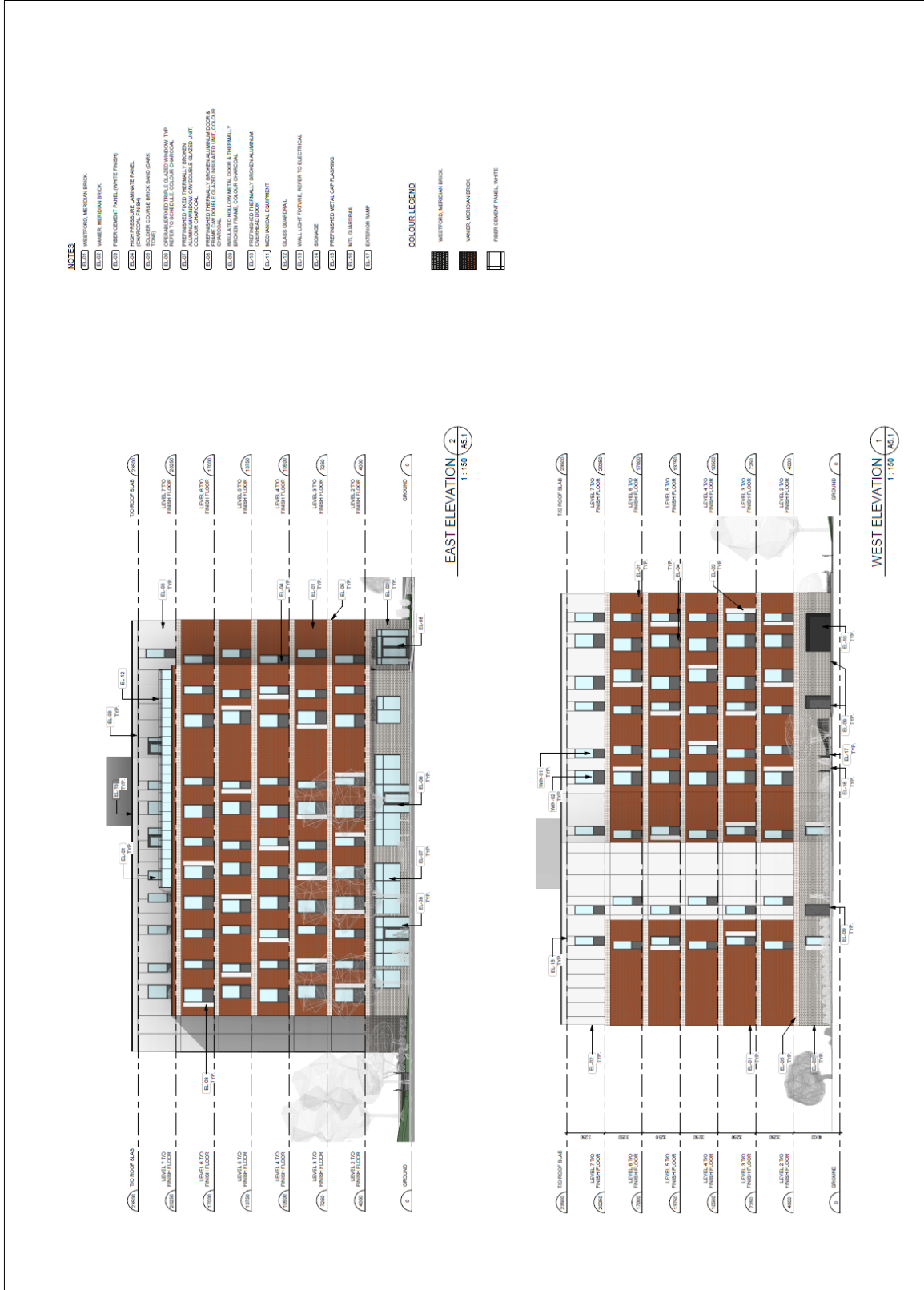




NO.	REVISIONS	DATE	BY	CHKD.
1	ISSUED FOR PERMIT	18.07.2022		
2	ISSUED FOR CONSTRUCTION	18.07.2022		
3				
4				
5				
6				
7				
8				
9				
10				
11				
12				
13				
14				
15				
16				
17				
18				
19				
20				

DO NOT SCALE DRAWING. DIMENSIONS ARE TO FACE UNLESS NOTED OTHERWISE. ALL DIMENSIONS ARE TO FACE UNLESS NOTED OTHERWISE. CONTRACTOR TO VERIFY ALL DIMENSIONS AND CONDITIONS ON SITE. THIS DRAWING SHALL NOT BE USED FOR CONSTRUCTION WITHOUT THE WRITTEN APPROVAL OF THE ARCHITECT. CONSULT THE ARCHITECT FOR ANY CHANGES TO THIS DRAWING. CONTRACTOR TO VERIFY ALL DIMENSIONS AND CONDITIONS ON SITE. THIS DRAWING SHALL NOT BE USED FOR CONSTRUCTION WITHOUT THE WRITTEN APPROVAL OF THE ARCHITECT.

PROJECT NAME: JAMESVILLE REDEVELOPMENT
PROJECT ADDRESS: JAMESVILLE HAMILTON
PROJECT NO.: 10030
DRAWING TITLE: BUILDING ELEVATIONS
DATE: 04/15/22
CHECKED BY: AS
SCALE: AS NOTED
PROJECT NO.: A5.1





KIRKOR ARCHITECTS AND PLANNERS
20 De Beers Dr # 400 Toronto ON M5J 1H1
Tel: 416 865 6600 KirkorArchitects.com

Architect's Stamp: ASKOR ARCHITECTS INC. 14000147

Site: _____
Date: _____

File: _____
Date: _____

As of this date, the drawings and related documents are the property of the Architect. They shall remain the property of the Architect and shall not be used, copied, reproduced, or otherwise disseminated without the prior written consent of the Architect. The Architect shall not be responsible for any errors or omissions in these drawings or related documents. The Architect shall not be responsible for any delays or interruptions in the construction process. The Architect shall not be responsible for any claims or damages arising from the use of these drawings or related documents. The Architect shall not be responsible for any claims or damages arising from the use of these drawings or related documents.

Print Date: 6/22/2021 11:13:28 AM File Path: C:\Users\ASKOR\Documents\14000147\14000147-Block_M_m3.1\14000147-Block_M_m3.1.dwg



EXTERIOR FINISH LEGEND PACKAGE 3
16-112 - JAMESVILLE - HAMILTON

- (A1) METAL PANELS - BRASS
- (A2) METAL PANELS - BRASS
- (A3) METAL PANELS - BRASS
- (A4) METAL PANELS - BRASS
- (A5) METAL PANELS - BRASS
- (A6) METAL PANELS - BRASS
- (A7) METAL PANELS - BRASS
- (A8) METAL PANELS - BRASS
- (A9) METAL PANELS - BRASS
- (A10) METAL PANELS - BRASS
- (A11) METAL PANELS - BRASS
- (A12) METAL PANELS - BRASS
- (A13) METAL PANELS - BRASS
- (A14) METAL PANELS - BRASS
- (A15) METAL PANELS - BRASS
- (A16) METAL PANELS - BRASS
- (A17) METAL PANELS - BRASS
- (A18) METAL PANELS - BRASS
- (A19) METAL PANELS - BRASS
- (A20) METAL PANELS - BRASS
- (A21) METAL PANELS - BRASS
- (A22) METAL PANELS - BRASS
- (A23) METAL PANELS - BRASS
- (A24) METAL PANELS - BRASS
- (A25) METAL PANELS - BRASS
- (A26) METAL PANELS - BRASS
- (A27) METAL PANELS - BRASS
- (A28) METAL PANELS - BRASS
- (A29) METAL PANELS - BRASS
- (A30) METAL PANELS - BRASS
- (A31) METAL PANELS - BRASS
- (A32) METAL PANELS - BRASS
- (A33) METAL PANELS - BRASS
- (A34) METAL PANELS - BRASS
- (A35) METAL PANELS - BRASS
- (A36) METAL PANELS - BRASS
- (A37) METAL PANELS - BRASS
- (A38) METAL PANELS - BRASS
- (A39) METAL PANELS - BRASS
- (A40) METAL PANELS - BRASS
- (A41) METAL PANELS - BRASS
- (A42) METAL PANELS - BRASS
- (A43) METAL PANELS - BRASS
- (A44) METAL PANELS - BRASS
- (A45) METAL PANELS - BRASS
- (A46) METAL PANELS - BRASS
- (A47) METAL PANELS - BRASS
- (A48) METAL PANELS - BRASS
- (A49) METAL PANELS - BRASS
- (A50) METAL PANELS - BRASS
- (A51) METAL PANELS - BRASS
- (A52) METAL PANELS - BRASS
- (A53) METAL PANELS - BRASS
- (A54) METAL PANELS - BRASS
- (A55) METAL PANELS - BRASS
- (A56) METAL PANELS - BRASS
- (A57) METAL PANELS - BRASS
- (A58) METAL PANELS - BRASS
- (A59) METAL PANELS - BRASS
- (A60) METAL PANELS - BRASS
- (A61) METAL PANELS - BRASS
- (A62) METAL PANELS - BRASS
- (A63) METAL PANELS - BRASS
- (A64) METAL PANELS - BRASS
- (A65) METAL PANELS - BRASS
- (A66) METAL PANELS - BRASS
- (A67) METAL PANELS - BRASS
- (A68) METAL PANELS - BRASS
- (A69) METAL PANELS - BRASS
- (A70) METAL PANELS - BRASS
- (A71) METAL PANELS - BRASS
- (A72) METAL PANELS - BRASS
- (A73) METAL PANELS - BRASS
- (A74) METAL PANELS - BRASS
- (A75) METAL PANELS - BRASS
- (A76) METAL PANELS - BRASS
- (A77) METAL PANELS - BRASS
- (A78) METAL PANELS - BRASS
- (A79) METAL PANELS - BRASS
- (A80) METAL PANELS - BRASS
- (A81) METAL PANELS - BRASS
- (A82) METAL PANELS - BRASS
- (A83) METAL PANELS - BRASS
- (A84) METAL PANELS - BRASS
- (A85) METAL PANELS - BRASS
- (A86) METAL PANELS - BRASS
- (A87) METAL PANELS - BRASS
- (A88) METAL PANELS - BRASS
- (A89) METAL PANELS - BRASS
- (A90) METAL PANELS - BRASS
- (A91) METAL PANELS - BRASS
- (A92) METAL PANELS - BRASS
- (A93) METAL PANELS - BRASS
- (A94) METAL PANELS - BRASS
- (A95) METAL PANELS - BRASS
- (A96) METAL PANELS - BRASS
- (A97) METAL PANELS - BRASS
- (A98) METAL PANELS - BRASS
- (A99) METAL PANELS - BRASS
- (A100) METAL PANELS - BRASS
- (R1) METAL PANELS - BRASS
- (R2) METAL PANELS - BRASS
- (R3) METAL PANELS - BRASS

Exterior Finish Legend / 5
NTS PA3.1

KIRKOR ARCHITECTS AND PLANNERS
20 De Beers Dr. # 400 Toronto ON M5J 0H1
Tel: 416 865 0490 kirkorarchitects.com

No. 1: Resolution: Date:

Project: Proposed Residential Redevelopment
Enter address: Jamesville Redevelopment Ltd. Partnership

Drawing Title: Block P Elevations
Scale: 1:100
Client: D.S.
Design No: M.A.
Change No: 16-112
Project No: June 2, 2021
Date: pA3.1