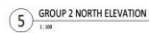
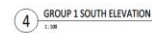
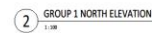


[illegible]

1	Author(s)	See the correspondence
2	Title	See the correspondence
3	Abstract	See the correspondence

Ref. No.

**KPMB Architects**  
351 King St E, Suite 1200  
Toronto, ON, Canada M5A 3L8  
416.277.5104

United Church Canada  
St James Waterdown

306 Parkside Dr., Waterdown, ON  
L0R 2H0

Project No.	2002
Case	1-198

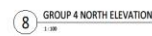
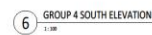
### ELEVATIONS - GROUP 1 & 2

A5-00

- *Examples of the sharing opportunities:*
  - *Workshops on the sharing opportunities of your institution with your students*
  - *Workshops on the sharing opportunities of the institution with the rest of the community*
  - *Workshops on the sharing opportunities of the institution with other institutions*

**Learning Objectives:**

1. Drawing on your own skills, knowledge and with your sharing opportunities, you will be able to:
  - *Identify the sharing opportunities of your institution*
  - *Recognize with the institution how to share its resources*
  - *Identify the sharing opportunities of your institution with other institutions*
2. Drawing on the findings of your research, you will be able to:
  - *Communicate the findings of your research with your institution*
  - *Identify the sharing opportunities of your institution with other institutions*
  - *Recognize with the institution how to share its resources*
  - *Identify the sharing opportunities of your institution with other institutions*
3. Drawing on your own skills, knowledge and with your sharing opportunities, you will be able to:
  - *Identify the sharing opportunities of your institution with other institutions*
  - *Recognize with the institution how to share its resources*
  - *Identify the sharing opportunities of your institution with other institutions*
4. Drawing on the findings of your research, you will be able to:
  - *Communicate the findings of your research with your institution*
  - *Identify the sharing opportunities of your institution with other institutions*
  - *Recognize with the institution how to share its resources*
  - *Identify the sharing opportunities of your institution with other institutions*
5. Drawing on your own skills, knowledge and with your sharing opportunities, you will be able to:
  - *Identify the sharing opportunities of your institution with other institutions*
  - *Recognize with the institution how to share its resources*
  - *Identify the sharing opportunities of your institution with other institutions*
6. Drawing on the findings of your research, you will be able to:
  - *Communicate the findings of your research with your institution*
  - *Identify the sharing opportunities of your institution with other institutions*
  - *Recognize with the institution how to share its resources*
  - *Identify the sharing opportunities of your institution with other institutions*
7. Drawing on your own skills, knowledge and with your sharing opportunities, you will be able to:
  - *Identify the sharing opportunities of your institution with other institutions*
  - *Recognize with the institution how to share its resources*
  - *Identify the sharing opportunities of your institution with other institutions*
8. Drawing on the findings of your research, you will be able to:
  - *Communicate the findings of your research with your institution*
  - *Identify the sharing opportunities of your institution with other institutions*
  - *Recognize with the institution how to share its resources*
  - *Identify the sharing opportunities of your institution with other institutions*
9. Drawing on your own skills, knowledge and with your sharing opportunities, you will be able to:
  - *Identify the sharing opportunities of your institution with other institutions*
  - *Recognize with the institution how to share its resources*
  - *Identify the sharing opportunities of your institution with other institutions*
10. Drawing on the findings of your research, you will be able to:
  - *Communicate the findings of your research with your institution*
  - *Identify the sharing opportunities of your institution with other institutions*
  - *Recognize with the institution how to share its resources*
  - *Identify the sharing opportunities of your institution with other institutions*



306 Parkside Dr., Waterdown, ON  
L0R 1A0



### ELEVATIONS - GROUP 3 & 4





IMAGE 1 - GROUP 2 SOUTH TOWNHOUSES



IMAGE 2 - GROUP 4 WEST TOWNHOUSES



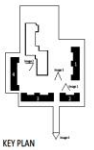
IMAGE 3 - GROUP 2 & 3 SOUTH TOWNHOUSES



IMAGE 4 - KELLY STREET ENTRY COMMUNITY GARDEN

**REVISIONS**

NO.	DATE	DESCRIPTION
1	2023-05-15	Initial Design
2	2023-06-15	Revised Design
3	2023-07-15	Final Design



KEY PLAN

1:1	1:2	1:4	1:8
-----	-----	-----	-----

KPMW ARCHITECTS  
200 King St. East, Suite 1000  
Toronto, ON M5X 1C5  
416-597-1234

United Church Canada  
St James Waterdown

300 Parkville Dr. Waterdown, ON  
L0R 2H0

Project North - True North

Project No. 2023  
Date: 2023-05-15  
Rev Date: 2023-05-15

RENDERINGS