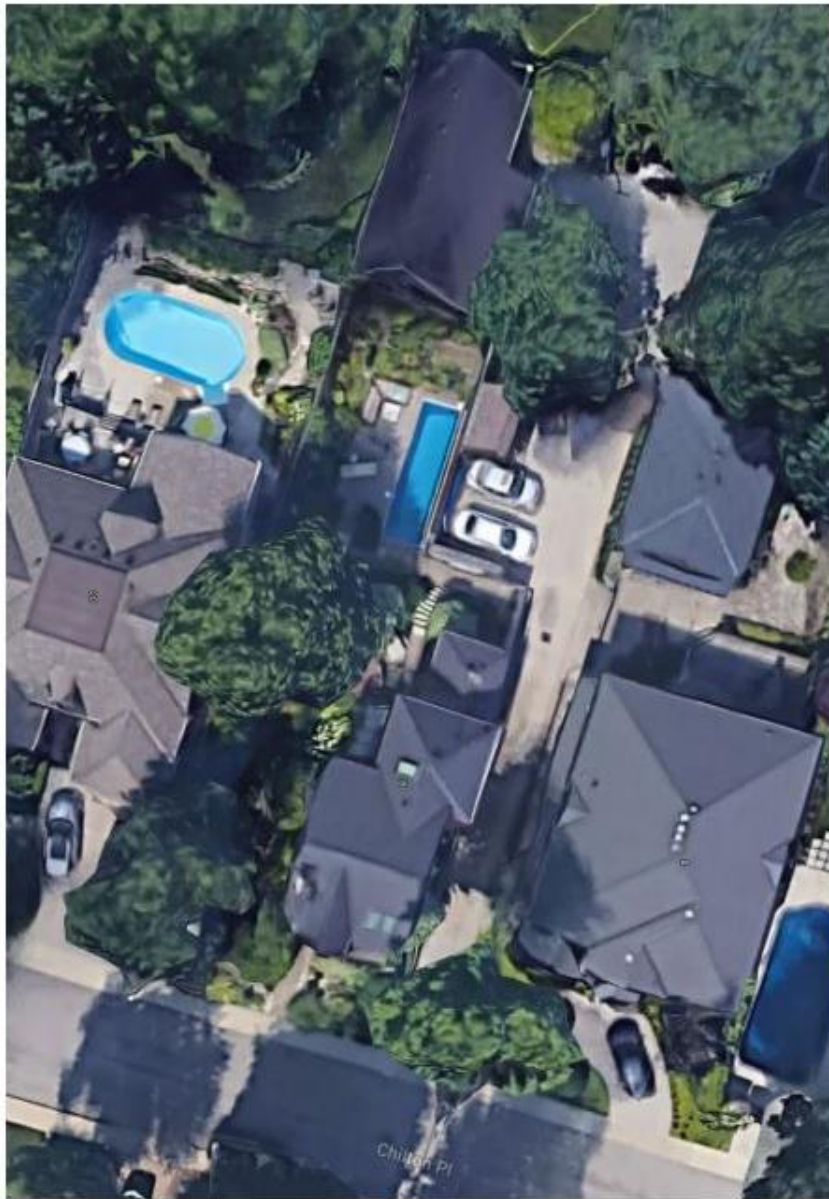


Application Submission Materials (modified to remove personal information)



1.0 18 Chilton Place, Hamilton, ON



1.1 Aerial West View – 18 Chilton Place, Hamilton, ON



1.2 Arial View - Proposed Garage Build Area



1.3 West View – Alley that divides 18 Chilton Place and 8 Chilton Place.



1.4 West View – Alley that divides 18 Chilton Place and 8 Chilton Place.



1.5 North West View – Garage at rear of 8 Chilton Place, Hamilton (17 feet high – do metric).



1.6 South West View – Two car parking area and shed at rear of 18 Chilton Place, Hamilton. Area of requested garage with storage on top. Two car garage with storage above to the south of the shed in neighbouring property at 77 Markland Street, Hamilton.



1.7 South View – Lane between 18 Chilton Place, Hamilton and 77 Markland Street, Hamilton.



1.8 South East View – Two car parking area and shed at rear of 18 Chilton Place, Hamilton. Area of requested garage with storage on top. It should be noted that the detached one and a half story accessory building to be used as a private garage and workshop with second floor storage will be made with the same external materials to match the rear addition of the home. The building will include the same shingles, style of windows, black trim and cedar siding.

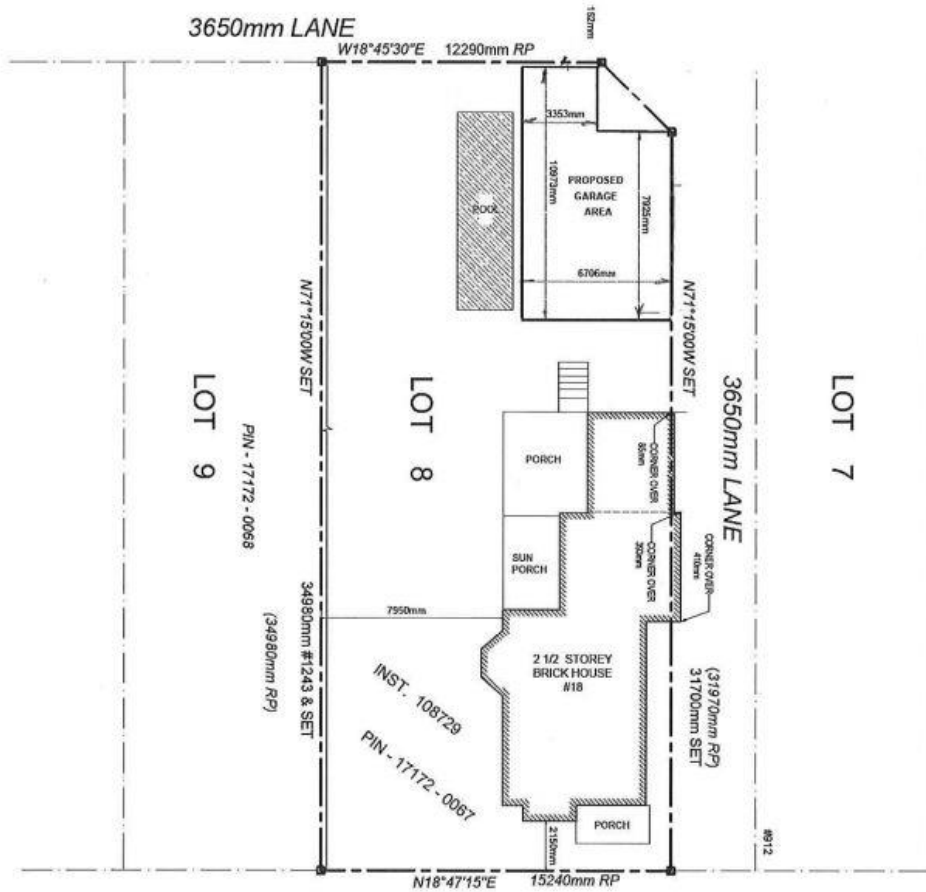


1.9 South View – Two car parking area and shed at rear of 18 Chilton Place, Hamilton. Area of requested garage with storage on top. Three car garage with storage in neighbouring property at 77 Markland Street, Hamilton.



PROPOSED SITE PLAN FOR GARAGE

18 CHILTON PLACE,
HAMILTON, ONTARIO,
CANADA, L8P 3G7

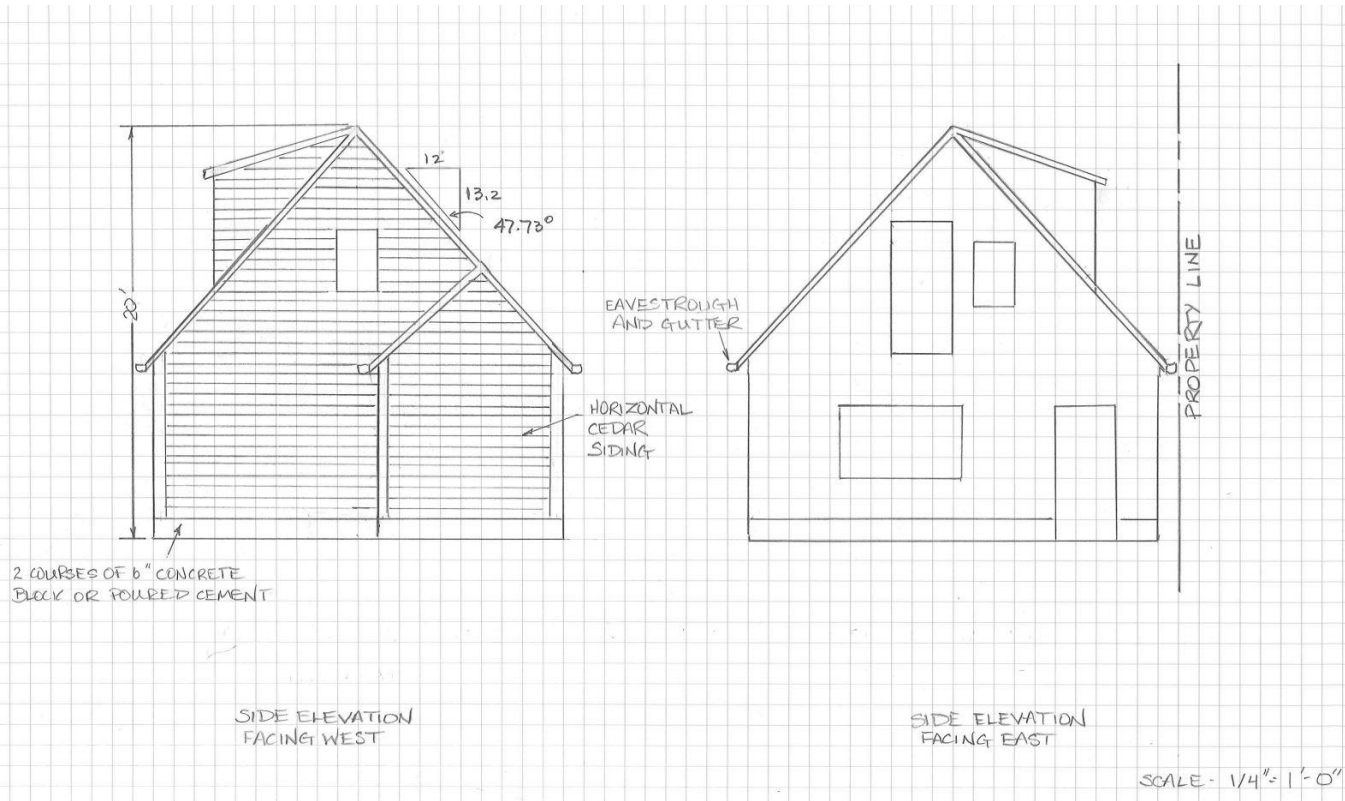
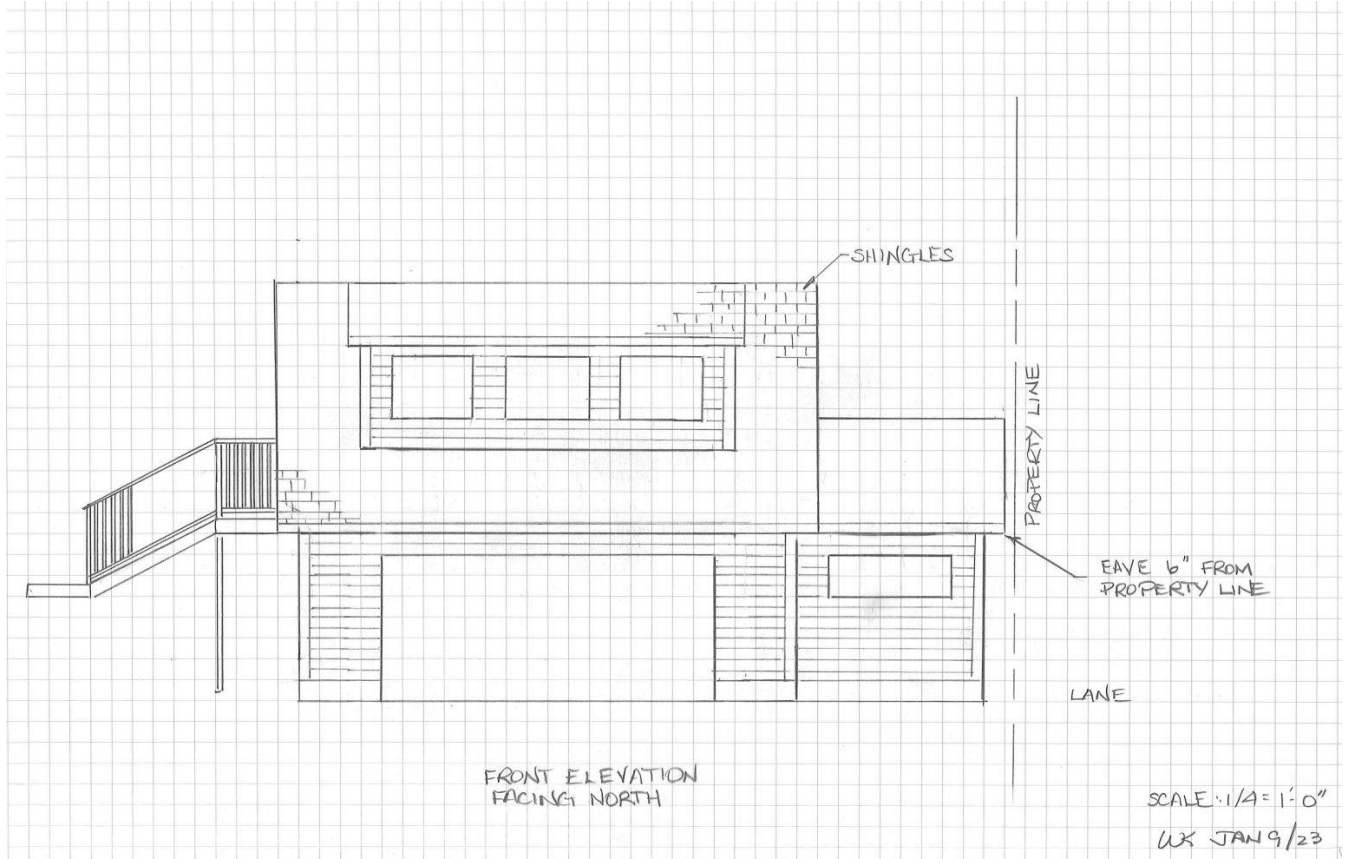


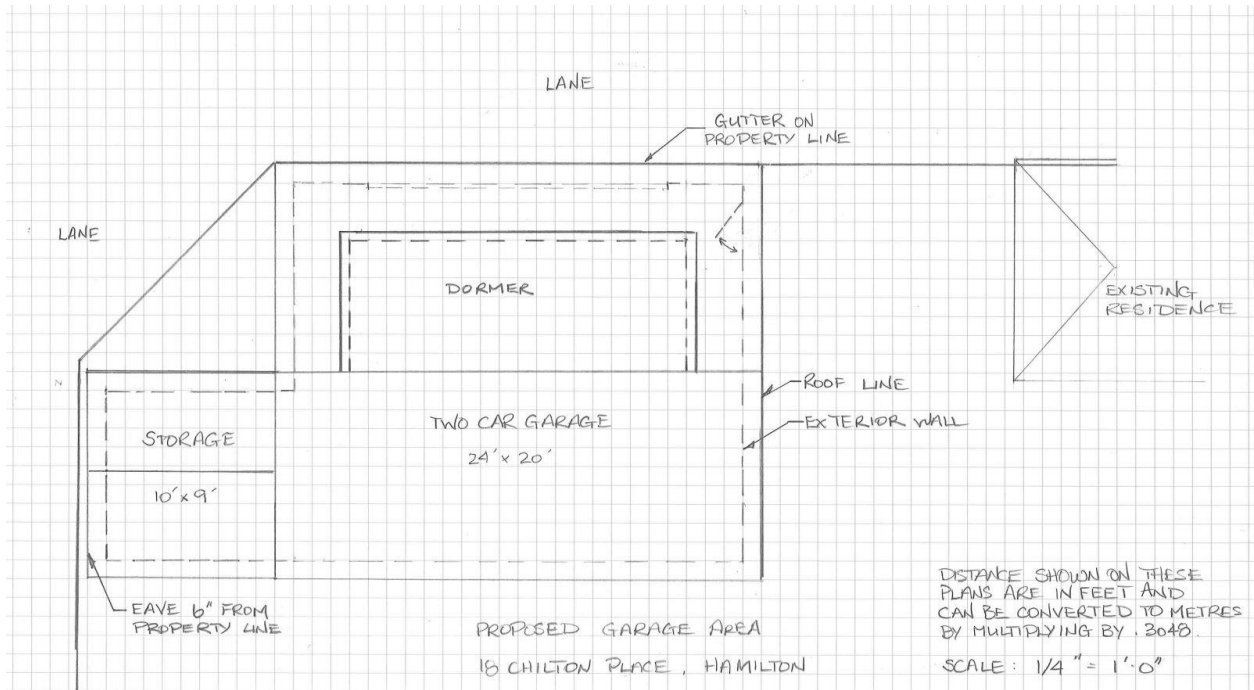
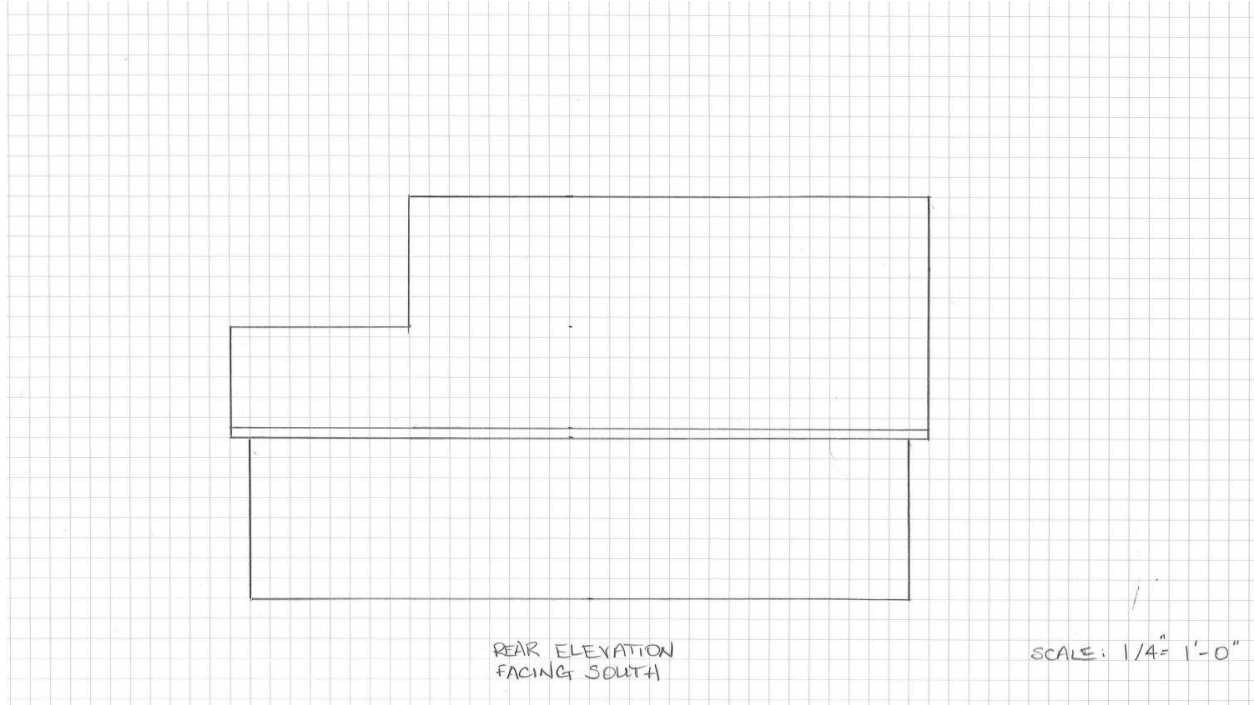
MARKLAND STEET

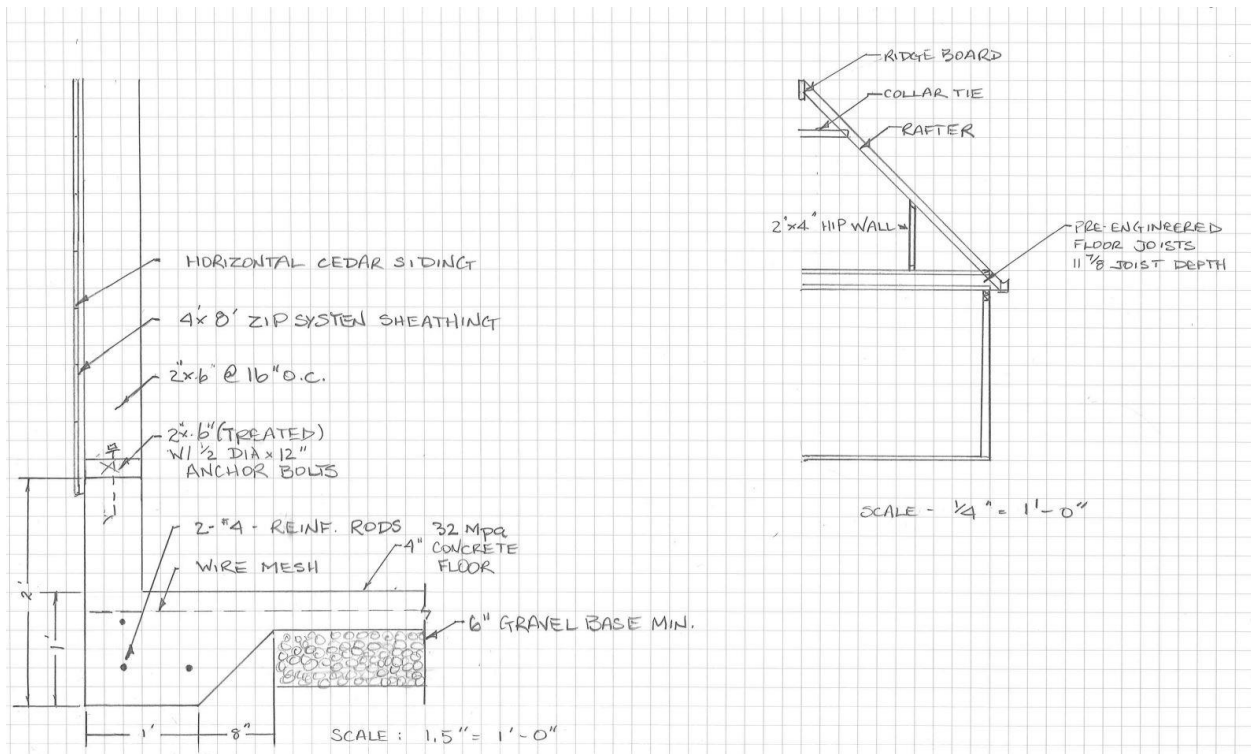
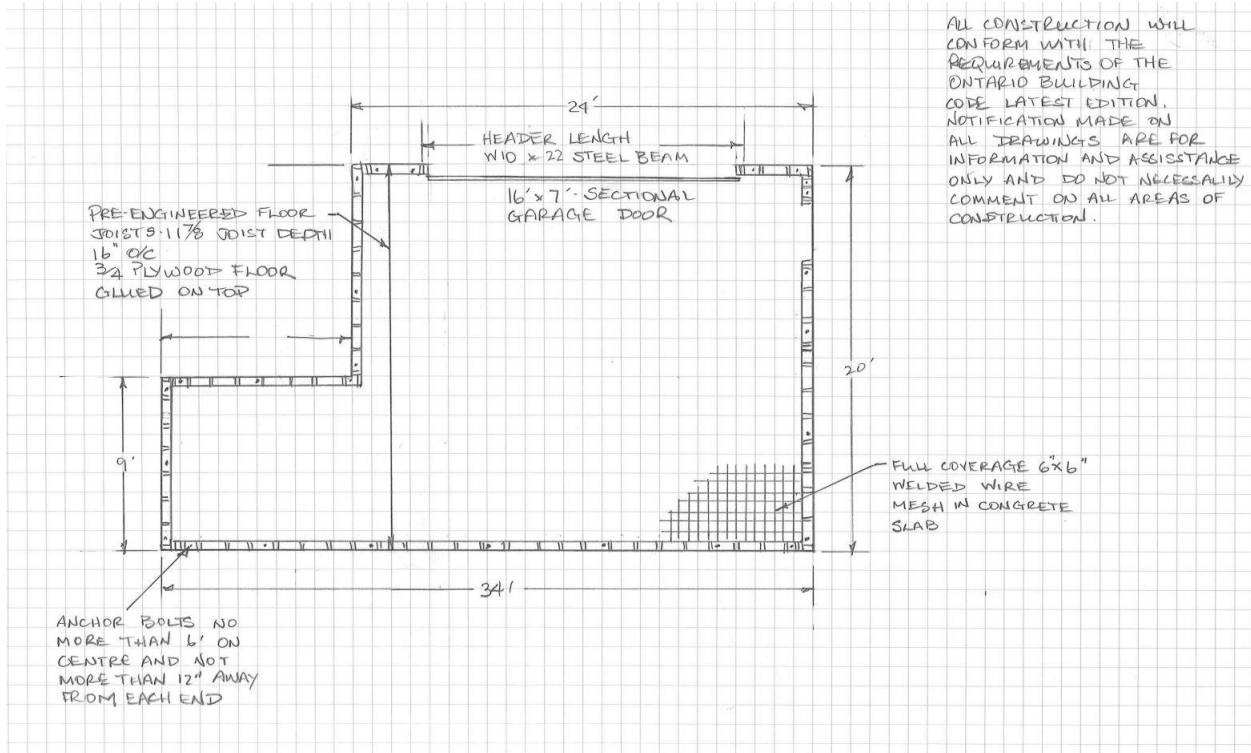
CHILTON PLACE

PIN - 17172 - 0067 (PLAN NO. 40)

SCALE = 1:180









Sample of proposed garage door – to be painted to match front door