

Double Sided LED Illuminated Pylon Sign w/ Full Colour Digital Displays (Quantity 1 Required)

Scale: 1:58



Material Specifications

- Single Sided Aluminum Constructed Cabinet w/ Formed Retainer Ring Painted Dark Teal (TBD)
- 3/16" White Lexan Face w/ 1st Surface Direct Printed Digital Graphics (UV Overlamine)
- White LED Illumination
- **Includes Aluminum Filler Cladding Painted Dark Teal (TBD)**

- Watchfire Full Colour Digital Display
- Cabinet Size: 16'-0" High x 12'-0" Wide x 8" Depth / Active Area: 15'-0" High x 11'-0" Wide
- RWF High Speed Long Range Wireless Point-to-point Radio (Clear Line of Sight Required)
- Time & Temperature (150 Horizontal / 95 Vertical Viewing Angles)

- 4" x 8" HSS Posts Primed & Painted Black

INSTALLATION NOTE:
Customer is responsible for providing adequate 240v power to the sign location and must have their licensed electrician complete the final electrical hook up. Existing concrete base and anchor bolts to be re-used pending Engineering review and sonar scanning results.

- Aluminum Constructed Baseplate Cover Mantle Painted Black
- 1st Surface Die Cut Vinyl Graphics (White A-9001T / Gold A-9248T-Logo)

- Existing Concrete Base w/ Decorative Veneer Stonework (By Others)

Electrical Requirements

240v

SITE CHECK REQUIRED

VECTON ART (REQUIRED)

WALL COLOUR (REQUIRED)

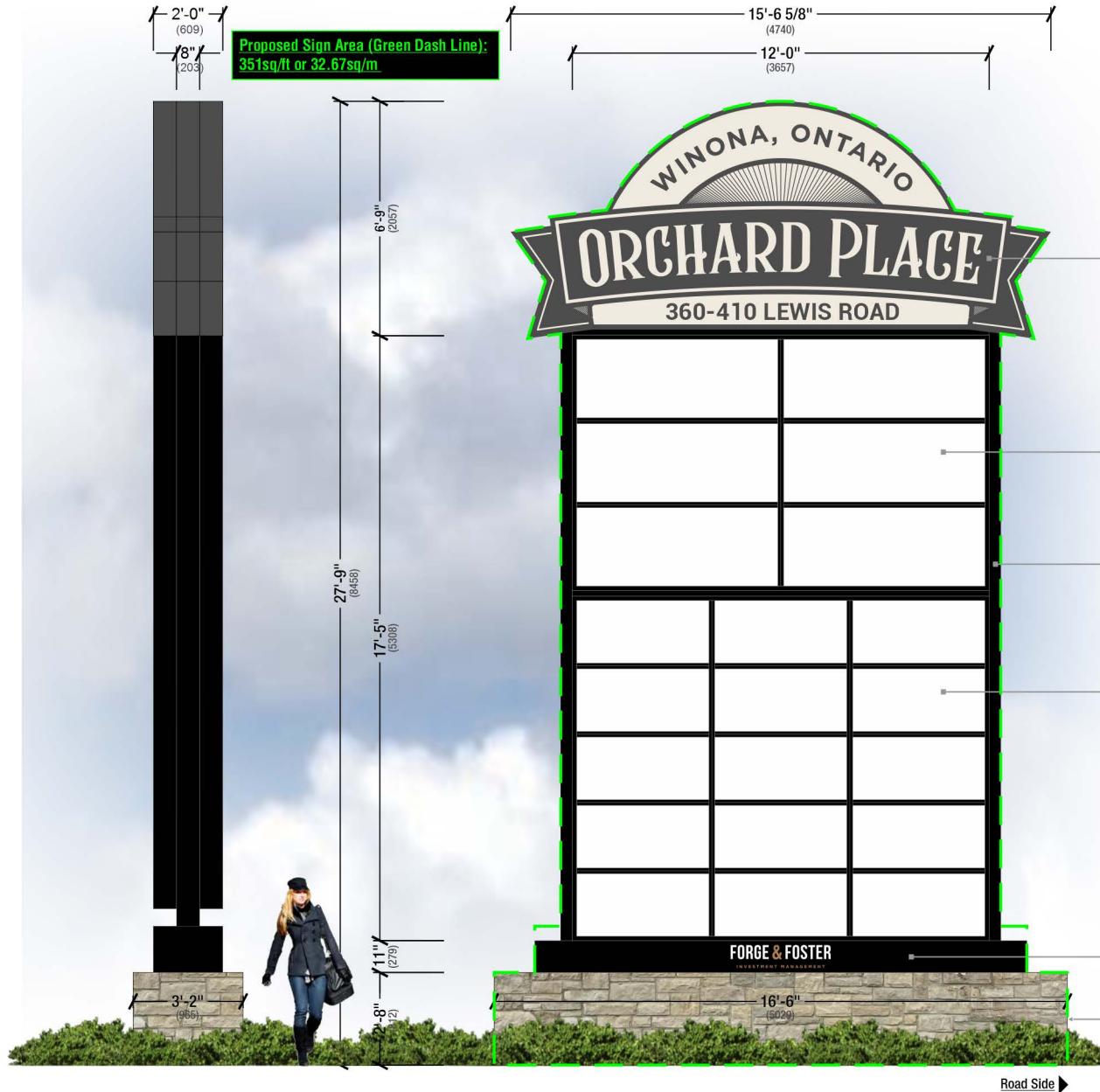
November 30, 2021 12:49 PM
M. Auclair
Updated header graphic colours.

February 9, 2022 2:09 PM
M. Auclair
Added proposed sign area dimension.

Preliminary Artwork
 Approved for Production

Double Sided LED Illuminated Pylon Sign Retrofit (Quantity 1 Required)

Scale: 1:58



Material Specifications

- Single Sided Aluminum Constructed Cabinet w/ Formed Retainer Ring Painted Dark Teal (TBD)
- 3/16" White Lexan Face w/ 1st Surface Direct Printed Digital Graphics (UV Overlamine)
- White LED Illumination
- **Includes Aluminum Filler Cladding Painted Dark Teal (TBD)**

- Double Sided Aluminum Pride Filler / Retainer & H Dividers Painted Black
- 3/16" White Lexan Faces w/ 1st Surface Direct Printed Digital Graphics (UV Overlamine)
- White LED Illumination
- NOTE: Customer to supply tenant graphic files prior to releasing to manufacturing.

- 4" x 8" HSS Posts Primed & Painted Black

- Double Sided Aluminum Pride Filler / Retainer & H Dividers Painted Black
- 3/16" White Lexan Faces w/ 1st Surface Direct Printed Digital Graphics (UV Overlamine)
- White LED Illumination
- NOTE: Customer to supply tenant graphic files prior to releasing to manufacturing.

INSTALLATION NOTE:

Customer is responsible for providing adequate 120v power to the sign location and must have their licensed electrician complete the final electrical hook up. Existing concrete base and anchor bolts to be re-used pending Engineering review and sonar scanning results.

- Aluminum Constructed Baseplate Cover Mantle Painted Black
- 1st Surface Die Cut Vinyl Graphics (White A-9001T / Gold A-9248T-Logo)

- Existing Concrete Base w/ Decorative Veneer Stonework (By Others)

Electrical Requirements

120v 277v 347v

SITE CHECK REQUIRED

VECTOR ART REQUIRED

WALL COLOUR REQUIRED

February 9, 2022 2:09 PM
M.Auclair
Added proposed sign area dimension.

Preliminary Artwork
 Approved for Production

Double Sided LED Illuminated Pylon Sign w/ Full Colour Digital Displays (Quantity 1 Required)

Scale: 1:58

MTO



Material Specifications

- Single Sided Aluminum Constructed Cabinet w/ Formed Retainer Ring Painted Dark Teal (TBD)
- 3/16" White Lexan Face w/ 1st Surface Direct Printed Digital Graphics (UV Overlamine)
- White LED Illumination
- **Includes Aluminum Filler Cladding Painted Dark Teal (TBD)**

- Watchfire Full Colour Digital Display
- Cabinet Size: 16'-0" High x 12'-0" Wide x 8" Depth / Active Area: 15'-0" High x 11'-0" Wide
- RWF High Speed Long Range Wireless Point-to-point Radio (Clear Line of Sight Required)
- Time & Temperature (150 Horizontal / 95 Vertical Viewing Angles)

- 4" x 8" HSS Posts Primed & Painted Black

INSTALLATION NOTE:
Customer is responsible for providing adequate 240v power to the sign location and must have their licensed electrician complete the final electrical hook up. Existing concrete base and anchor bolts to be re-used pending Engineering review and sonar scanning results.

- Aluminum Constructed Baseplate Cover Mantle Painted Black
- 1st Surface Die Cut Vinyl Graphics (White A-9001T / Gold A-9248T-Logo)

- Existing Concrete Base w/ Decorative Veneer Stonework (By Others)

Electrical Requirements

240v 277v 347v

SITE CHECK REQUIRED

VECTOR ART REQUIRED

WALL COLOUR REQUIRED

November 30, 2021 12:49 PM
M. Auclair
Updated header graphic colours.

February 9, 2022 2:09 PM
M. Auclair
Added proposed sign area dimension.

November 15, 2022 12:58 PM
M. Auclair
Updated sign area calculations as per MTO guidelines.

Preliminary Artwork
 Approved for Production