



2024 **BUDGET**

BUDGET AT A GLANCE

\$50.2M

Budgeted for 2024

18.1%

Increase over 2023

4.2%

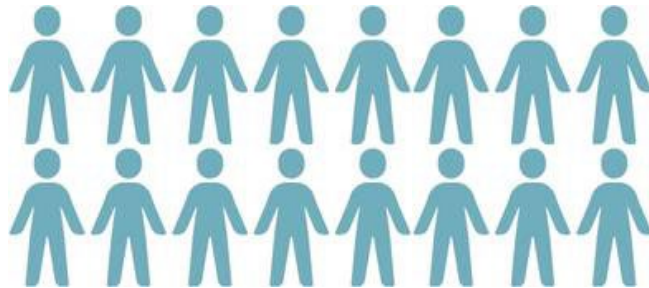
Base municipal
funding increase

\$20.6M

Anticipated program
revenues

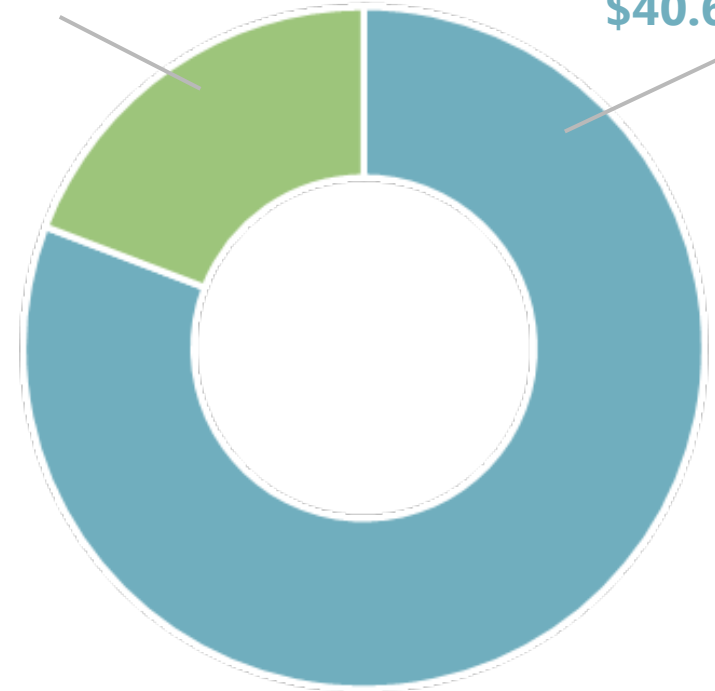
1,100

Employees, including
151 full-time staff



CAPITAL
\$9.6M

OPERATING
\$40.6M



MOMENTUM PRIORITIES



**NATURAL
HAZARDS
AND WATER**



**SCIENCE,
CONSERVATION
AND RESTORATION**



**EDUCATION,
EMPOWERMENT
AND ENGAGEMENT**



NATURE AND PARKS



**ORGANIZATIONAL
SUSTAINABILITY**



**DIGITAL
TRANSFORMATION
AND INNOVATION**



PEOPLE AND TALENT

KEY MILESTONES & METRICS

100%

Of major permits issued within 90 days

47

Real-time rain gauges in CH's network

60+

Hectares of land restored year to date



320+ landowner collaborations

1M+ annual park visitors projected

52K+ students from 19 school boards projected

\$17.1M self-sustaining park revenue



POPULATION

681,000 people reside within our jurisdiction



LAND

11,000+ acres owned, protected and managed



WATERSHED

261,600 acres make up CH's watershed

BUSINESS HIGHLIGHTS

PERMITTING & PLANNING

NATURAL HAZARDS &
WATERSHED MANAGEMENT

CONSERVATION LANDS

CORPORATE ADMINISTRATION
& OPERATIONS



Flood Hazard Mapping

88% of watershed flood hazard mapping underway or completed, most recently for Urban Milton & East Burlington Creeks



Minor Permits

94% of minor permits approved within 30 days YTD

BUSINESS HIGHLIGHTS

PERMITTING & PLANNING

NATURAL HAZARDS & WATERSHED MANAGEMENT

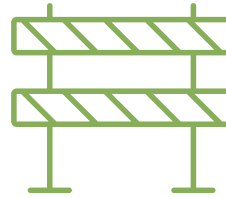
CONSERVATION LANDS

CORPORATE ADMINISTRATION & OPERATIONS



Dams & Channels

\$310.5M asset value, with \$1.3M annual lifecycle costs



Capital Improvements

5 major dam and channel capital repair projects in 2023, including at Scotch Block, Hilton Falls, and Mountsberg dams



Flood Forecasting & Warning

70% of CH's jurisdiction covered by real-time rain gauge/climate stations, with two new stations under development

BUSINESS HIGHLIGHTS

NATURAL HAZARDS & WATERSHED MANAGEMENT

600+

Watershed
monitoring sites

3000+

Hazard trees
removed

108,000+

Trees & shrubs planted (27% above 2023 target)



Community tree planting at **Hidden Valley Park**, delivered with City of Burlington and Cootes to Escarpment EcoPark System as part of an ecological corridor enhancement project along Grindstone Creek.

BUSINESS HIGHLIGHTS

NATURAL HAZARDS & WATERSHED MANAGEMENT

Example Projects:

- **Rattlesnake Point** Stream Crossing Replacement & Creekbank Stabilization
- **Root's Ridge** 10.7 hectare Wetland, Forest & Meadow Restoration
- **Cootes to Escarpment** Restoration Projects, resulting in 11,000 trees and shrubs planted in Halton Region

Cootes to Escarpment Restoration Projects



BUSINESS HIGHLIGHTS

PERMITTING & PLANNING

NATURAL HAZARDS &
WATERSHED MANAGEMENT

CONSERVATION LANDS

CORPORATE ADMINISTRATION
& OPERATIONS



158,000+

Hours of education programming



12,000

Park members



70+

Programs and events offered

BUSINESS HIGHLIGHTS

CONSERVATION LANDS



ACCESS TO NATURE

10+ AODA projects completed in 2023, and \$280K raised through our annual gala

\$8.4M

In gross revenues for Glen Eden – a record high

PARKS FULLY SELF-FUNDED

3750

Participants in WOW Camps

260,000

Glen Eden ski hill visits



BUSINESS HIGHLIGHTS

CONSERVATION LANDS

400

Free memberships
with **Parks Pass It On**

1750+

Participants in CH
outreach programs

3600

Students engaged
through the **Halton
Children's Water
Festival**

41

Classes participating
in **From the Ground
Up**, planting over
1200 trees and shrubs



BUSINESS HIGHLIGHTS

CONSERVATION LANDS



RESPONDING TO RISING DEMAND

\$36.9M earmarked in the capital forecast for major development projects at Crawford Lake and Kelso



Feasibility studies completed for Area 8 and Crawford Lake, and an active study is underway for Clappison Woods & Waterdown Woods to enhance CH's network of parks



BUSINESS HIGHLIGHTS

PERMITTING & PLANNING

NATURAL HAZARDS & WATERSHED MANAGEMENT

CONSERVATION LANDS

CORPORATE ADMINISTRATION & OPERATIONS



\$2.2M+

Awarded in grants and funding for projects in 2023, with \$100K secured for CH's Innovation Hub launch



65.9K

Followers on social media (18% increase over 2022) and 24K newsletter subscribers



91%

Customer satisfaction rate for signature park events

BUSINESS HIGHLIGHTS

CORPORATE ADMINISTRATION & OPERATIONS



CONTINUOUS LEARNING

More than 50 employees have participated in our Emerging Innovation Leaders program



Talent attraction and retention as one of Canada's award-winning top employers



Collaborative and supportive work culture that contributes positively to staff wellbeing



2024

BUDGET SUMMARY

2024 DRIVERS & PRIORITIES

Infrastructure

Infrastructure expansion, improvements, & state of good repair



Growth

Revenue growth from parks, grants, DCR; staffing growth



Legislation

CA Act Regulations, MOU's, & Bill 23 impact mitigation



Risk Management

Floodplain mapping & land management (invasive species, passive recreation areas)



BUDGET OVERVIEW

Total 2024 Budget

\$50.2M provides for growth and new initiatives



Base Municipal Funding Increase

Total base municipal increase of \$475K or 4.2%
Less than 24% of total budget



City of Hamilton Funding

Hamilton specific increase of 4.5% or \$37K



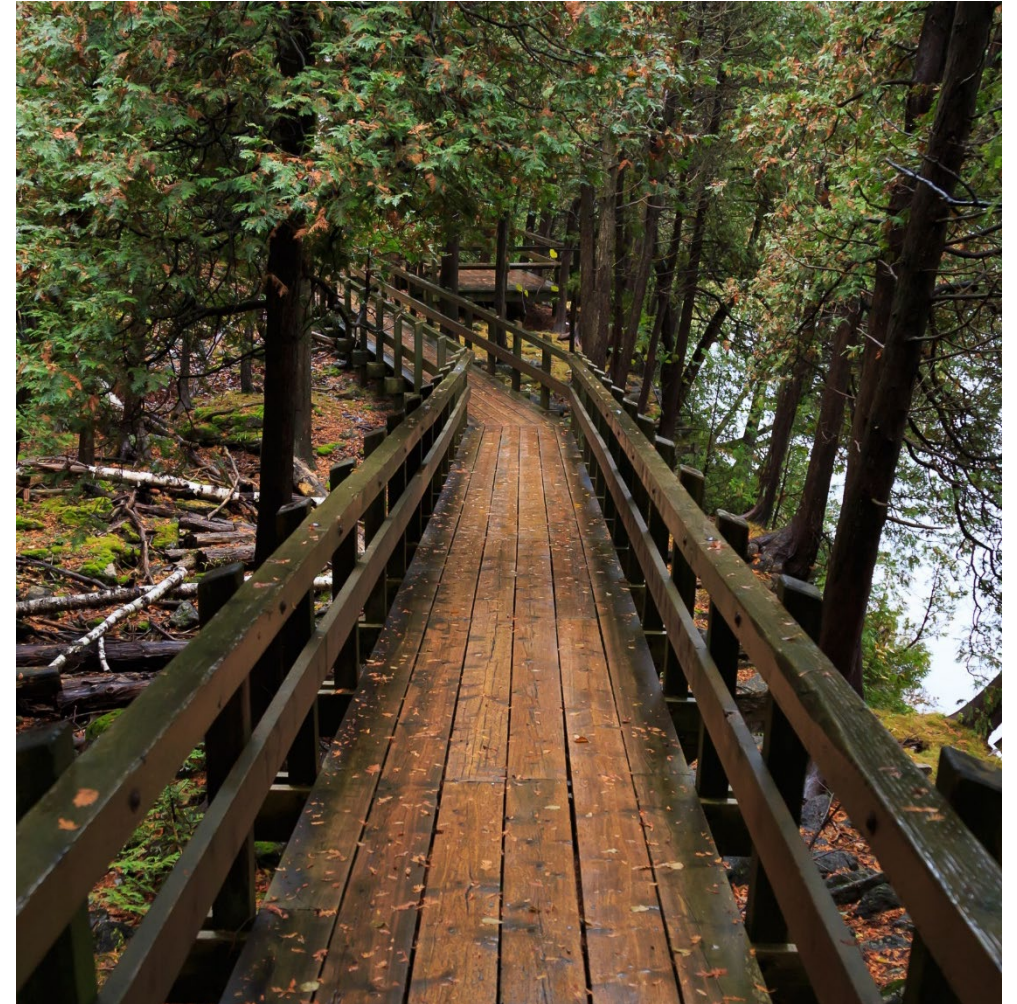
Capital Assets

Continued investment in capital assets via
State of Good Repair (SOGR) levy



Conservation Areas

Budgeted operating surplus of \$1.3M
Funded entirely by self-sustained revenues



2024 BUDGET SUMMARY

Budget Summary	2024 Budget	2023 Budget	Increase / (Decrease)
Revenue			
Program Revenue	\$ 20,687,260	\$ 18,713,896	\$ 1,973,364
Municipal Funding	11,774,197	11,298,835	475,362
Grants, Other Funding & Other Municipal Funding	9,487,756	6,244,081	3,243,675
Internal Chargeback Recoveries	3,342,554	3,022,997	319,557
Transfers from Reserves	3,977,827	2,411,299	1,566,528
Provincial Funding	920,820	810,438	110,382
Total Revenue	\$ 50,190,414	\$ 42,501,546	\$ 7,688,868
Expenses			
Corporate Administration & Operations	\$ 7,084,698	\$ 6,968,715	\$ 115,983
Natural Hazards & Watershed Management	7,465,809	6,127,595	1,338,214
Permitting & Planning	5,117,089	5,322,854	(205,765)
Conservation Lands			
Land Management	1,988,579	2,128,364	(139,785)
Parks & Recreation	16,360,173	15,207,419	1,152,754
Debt Financing	631,576	580,126	51,450
Transfers to Reserves	1,898,763	992,337	906,426
Capital	9,643,727	5,174,136	4,469,591
Total Expenses	\$ 50,190,414	\$ 42,501,546	\$ 7,688,868
Total Budget Surplus	\$ -	\$ -	\$ -

2024 BUDGET: MUNICIPAL FUNDING SUMMARY

Base Municipal Funding	2024 Base Municipal Funding	2023 Base Municipal Funding	Increase / (Decrease) \$	Increase / (Decrease) %
Operating	\$ 11,029,597	\$ 10,376,835	\$ 652,762	6.3%
Capital	145,000	382,000	(237,000)	(62.0%)
Subtotal	11,174,597	10,758,835	415,762	3.9%
Add: State of Good Repair (SOGR) Levy - Dams & Channels, Buildings	599,600	540,000	59,600	11.0%
Total Base Municipal Funding (Apportioned)	\$ 11,774,197	\$ 11,298,835	\$ 475,362	4.2%

Other Municipal Funding	2024 Budget	2023 Budget	Increase / (Decrease) \$
Emerald Ash Borer	834,000	834,000	-
Floodplain Mapping	649,000	550,000	99,000
Total Other Municipal Funding	\$ 1,483,000	\$ 1,384,000	\$ 99,000

MUNICIPAL APPORTIONMENT

Municipality:	2024 MCVA Apportionment (%)	2024 Apportioned Funding (\$)	2023 MCVA Apportionment (%)	2023 Apportioned Funding (\$)	Increase (%)
Halton Region	87.9309%	\$10,353,158	87.9192%	\$9,933,846	4.2%
City of Hamilton	7.2191%	849,991	7.1961%	813,075	4.5%
Peel Region	4.6278%	544,886	4.6664%	527,249	3.3%
Township of Puslinch	0.2222%	26,162	0.2183%	24,665	6.1%
	100%	\$11,774,197	100%	\$11,298,835	

Conservation Authorities Act, Programs & Services Categories:	2024 MCVA Apportioned Funding (\$)	2024 Hamilton Apportioned Funding (\$)	2023 MCVA Apportioned Funding (\$)
Category 1	\$11,302,815	\$815,961	\$10,818,279
Category 2	471,382	\$34,030	466,882
Category 3	-	-	13,674
Total	\$11,774,197	\$849,991	\$11,298,835

MUNICIPAL FUNDING INCREASE

Base Municipal Funding Drivers	Increase (Decrease)	Change
2023 Base Municipal Funding	\$ 11,298,835	
Reduced Operating Expenses, Compensation, and Inflation	601,312	
State of Good Repair Levy increase	59,600	
Increase in Debt Financing charges	51,450	
Municipal Capital Funding decrease	(237,000)	
Base Municipal Funding Increase	475,362	4.2%
2024 Base Municipal Funding	\$ 11,774,197	

2024 BUDGET: MUNICIPAL FUNDING FORECAST

	BUDGET	FORECAST			
	2024	2025	2026	2027	2028
Municipal Funding					
Operating	\$ 11,029,597	\$ 11,381,110	\$ 11,824,941	\$ 12,095,673	\$ 12,498,473
Capital	\$ 145,000	\$ 252,000	\$ 252,000	\$ 459,000	\$ 554,718
Municipal Funding - Total excluding SOGR Levy	\$ 11,174,597	\$ 11,633,110	\$ 12,076,941	\$ 12,554,673	\$ 13,053,190
% Change	3.9%	4.1%	3.8%	4.0%	4.0%
State of Good Repair (SOGR) Levy	\$ 599,600	\$ 667,000	\$ 743,700	\$ 830,600	\$ 929,600
Municipal Funding - Total including SOGR Levy	\$ 11,774,197	\$ 12,300,110	\$ 12,820,641	\$ 13,385,273	\$ 13,982,790
% Change	4.2%	4.5%	4.2%	4.4%	4.5%

Conservation Halton staff to continue to work with Halton Region staff on mitigating the annual increase to be within the regional guideline

2024 BUDGET: CAPITAL PROJECTS

Capital Projects		2024 Budget	2023 Budget	Increase / (Decrease)
WMSS	Emerald Ash Borer	\$ 834,000	\$ 850,000	\$ (16,000)
	Floodplain Mapping	649,000	550,000	99,000
	Dams & Channels SOGR Maintenance	621,000	420,000	201,000
	Flood Forecasting & Warning Program*	35,000	115,000	(80,000)
	Watershed Strategies & Climate Change	80,000	179,000	(99,000)
	Fleet Management	224,921	164,023	60,898
	Other Projects	300,000	355,000	(55,000)
	Facilities Infrastructure			
	Administration Office & Field Office SOGR	172,000	200,000	(28,000)
	Central Works Operations Centre	2,000,000	1,000,000	1,000,000
Digital Transformation				
IT Infrastructure	60,000	98,000	(38,000)	
Total WMSS	4,975,921	3,931,023	1,044,898	
Parks	Facility, Infrastructure & Ski Hill	2,668,000	1,163,000	1,505,000
	Fleet Replacement	252,306	80,113	172,193
	Developer Contribution Reserve Projects			
	Visitor Centres & Crawford Lake Boardwalk	1,747,500	-	1,747,500
Total Parks	4,667,806	1,243,113	3,424,693	
Total Capital	\$ 9,643,727	\$ 5,174,136	\$ 4,469,591	

\$145,000 in Municipal Capital Funding for 2024

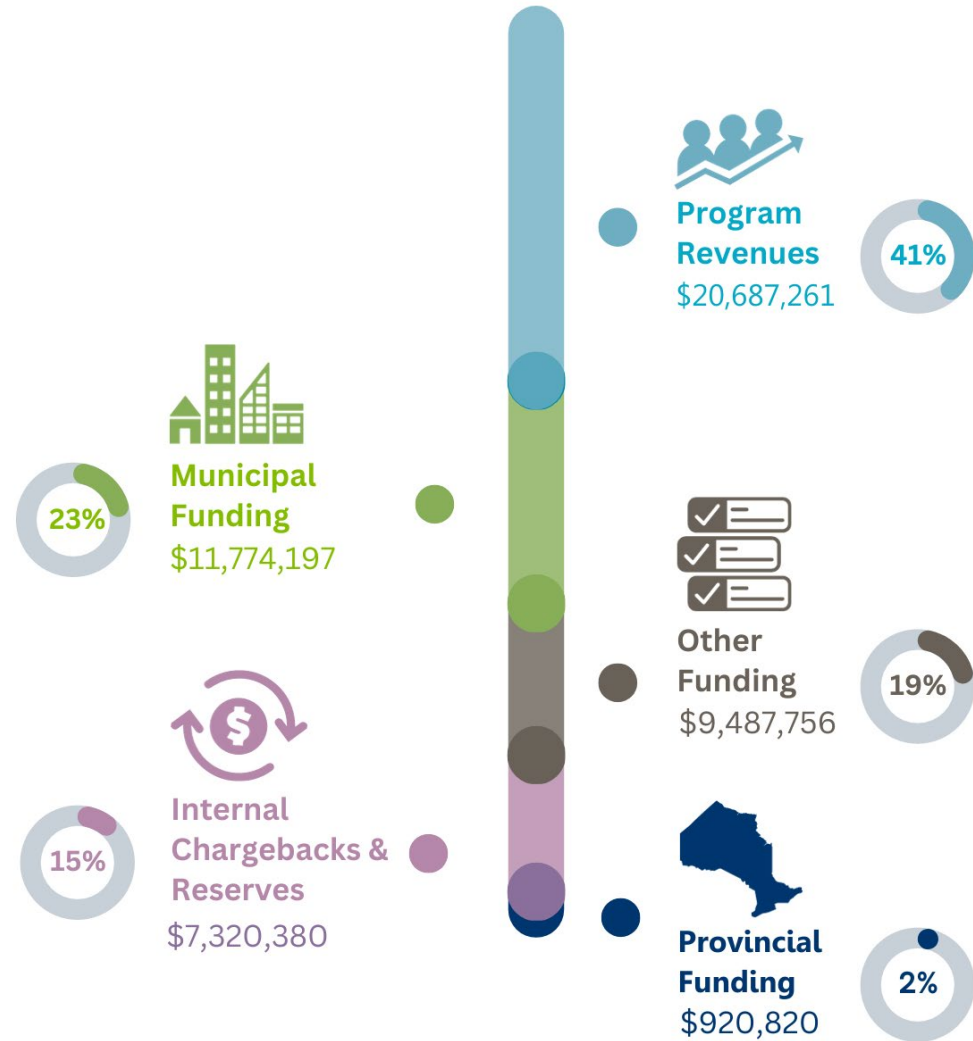
*Carryforward balances to be utilized in 2024

2024 BUDGET: FUNDING SOURCES

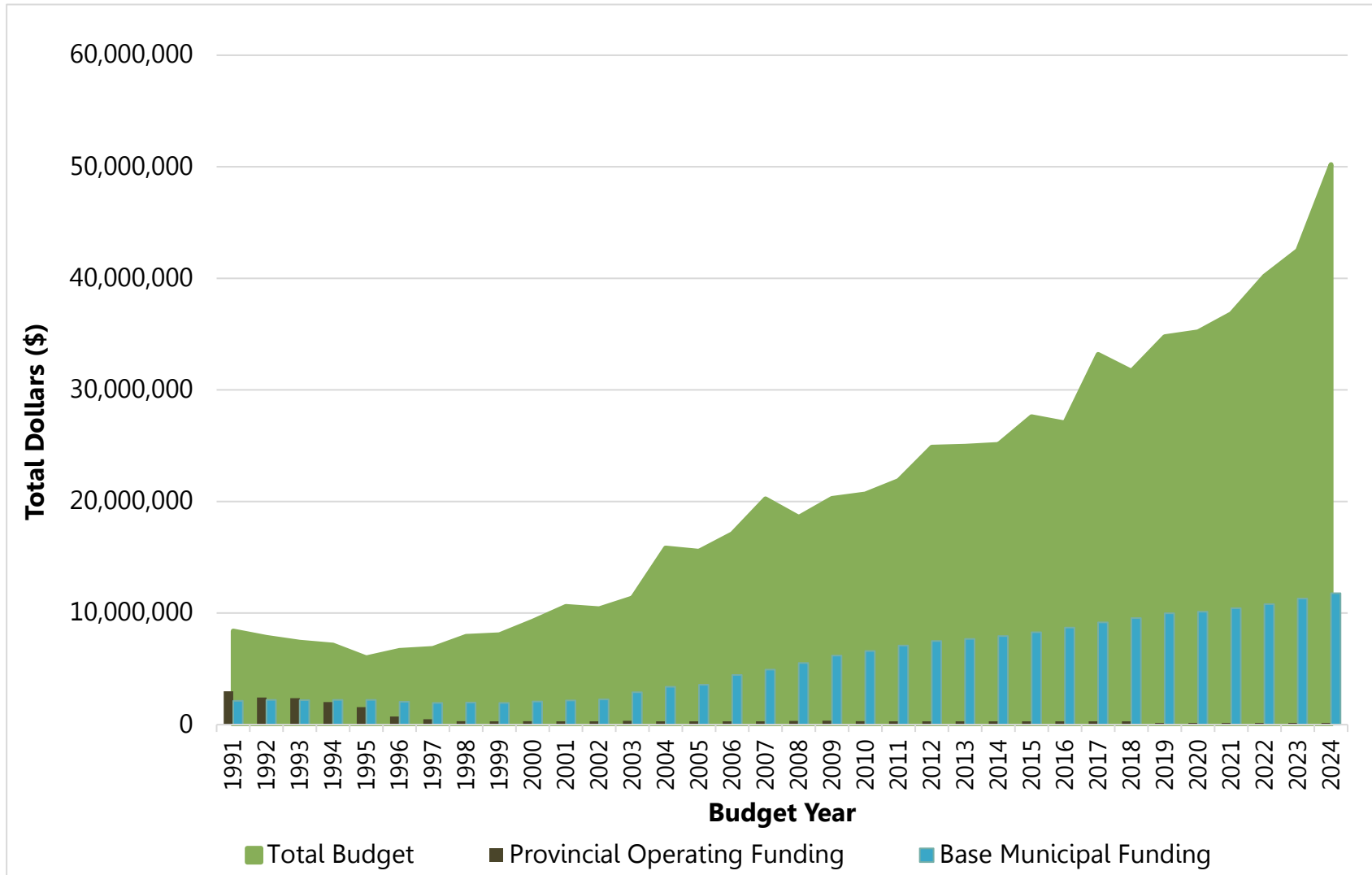
Budget Funding Sources

Total Budget of \$50,190,414

Operating \$40,546,687
Capital \$9,643,727



2024 BUDGET: HISTORICAL FUNDING

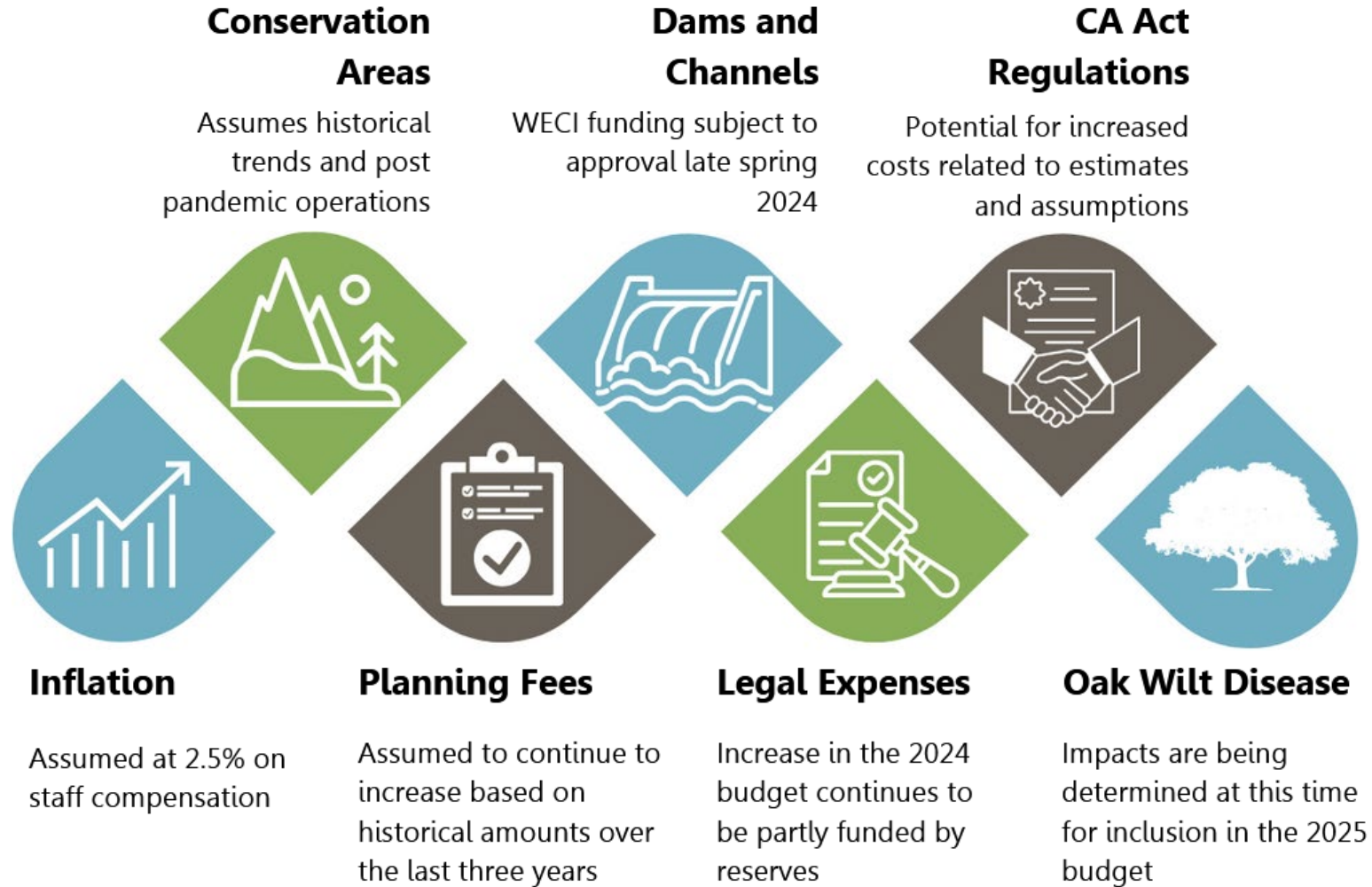


Provincial operating funding relative to total budget

1991 – 35.59%

2024 – 0.31%

2024 BUDGET: PRESSURES AND RISKS



THANK YOU
for your continued support.