

UNDERTAKINGS

1. THE UNDERTAKING TO BE COMPLETED BY THE DEVELOPER IS AS FOLLOWS:

- To provide a site plan at grade for the proposed development.
- To provide a site plan at grade for the proposed development.
- To provide a site plan at grade for the proposed development.
- To provide a site plan at grade for the proposed development.

PLANNING CONSULTANTS
A. J. Clarke and Associates Ltd.
20 St. John Street, Suite 201, Toronto, Ontario M5E 1A5
TEL: 416-593-1111 | WWW.AJCLARKE.COM

DATE:
MTE Consultants Inc.
1000 Bay Street, Suite 400, Toronto, Ontario M5G 1R7
TEL: 416-593-1111 | WWW.MTECONSULTANTS.COM

ARCHITECTS:
NEUF architects inc.
600 Bay Street, Suite 200, Toronto, Ontario M5G 1R7
TEL: 416-593-1111 | WWW.NEUFARCHITECTS.COM

SITE PLAN LEGEND

- PROPERTY LINE
- SETBACK LIMIT
- FENCE
- MARK ENTRANCE/EXIT
- ENTRANCE/EXIT
- WALK ROUTE

FOR EXISTING SITE CONDITIONS, SEE SURVEY PLAN BY A.T. MCGRAW CONSULTANTS SEPARATELY.

FOR BOUNDARY INFORMATION AND SETBACK INFORMATION, SEE LANDSCAPE PLAN BY A.T. MCGRAW CONSULTANTS SEPARATELY.

FOR NEW GRASSES AND SITE SERVICES, SEE CIVIL ENGINEERING PLAN BY MTE ENGINEERS CONSULTANTS SEPARATELY.

FOR PROPOSED VEGETATION AND LANDSCAPE INFORMATION, SEE LANDSCAPE ARCHITECTURE PLAN BY CUP GROUP & ARCHITECTS SEPARATELY.

DATE: 2023-01-10
SCALE: 1:200

SITE PLAN AT GRADE

NEUF ARCHITECTS

DV Trillium

BELLACOR

PROJECT: 125 NAPIER STREET

LOCATION: AMR.TCN.DN 13071

NO. SHEET: 04/18 (page 04/18)

NO. SHEETS: 04/18 (page 04/18)

DATE: 2023-01-10

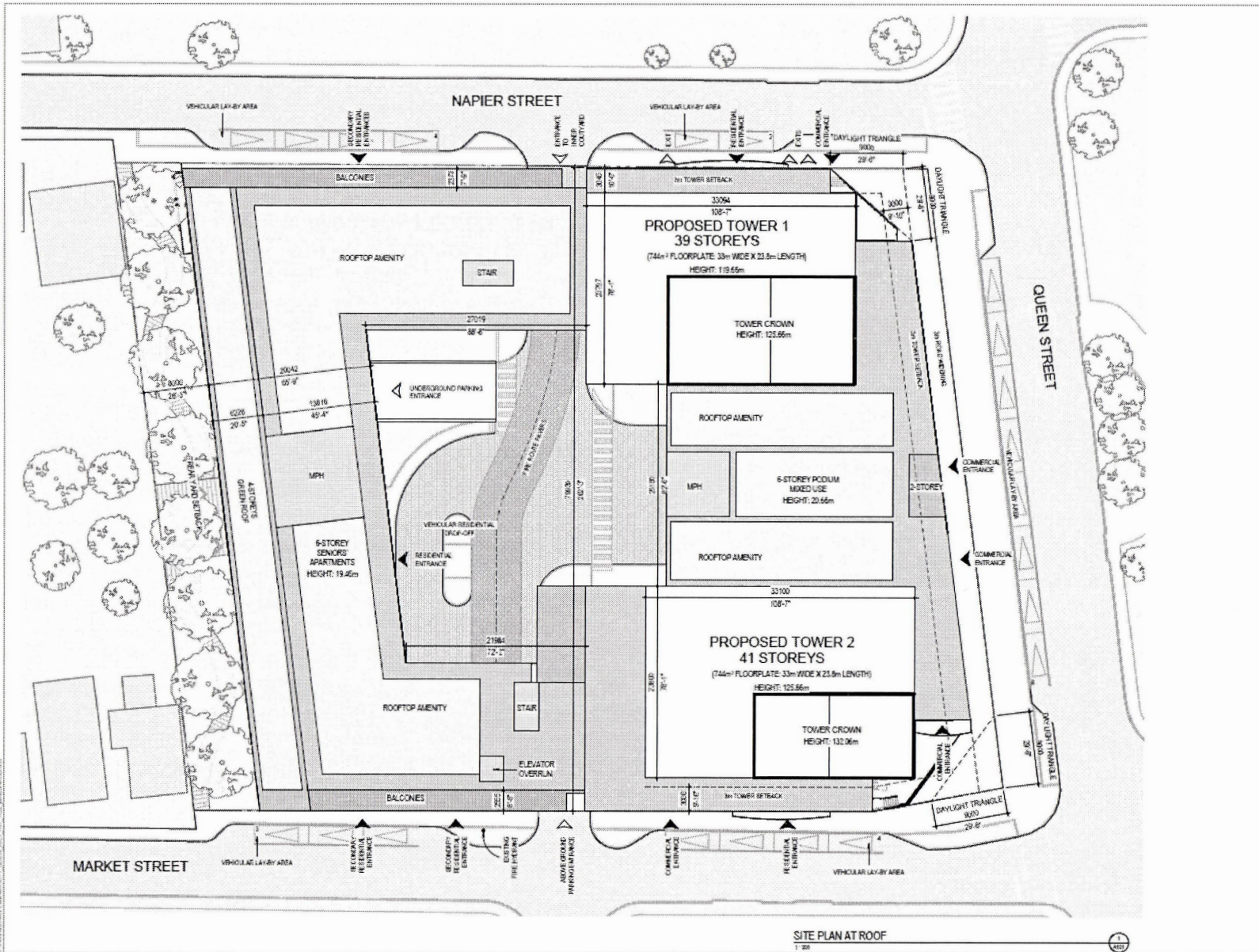
SCALE: 1:200

DESIGNED BY: J.A. **CHECKED BY:** C.A.K.

DATE: 2023-01-10 **SCALE:** 1:200

PREPARED BY: **SITE PLAN AT GRADE**

REVISION: **DRAWING NUMBER:** A100



SITE PLAN AT ROOF
1" = 20'

NEUF
ARCHITECTEJS

DV Trillium
ARCHITECTURE & DESIGN INC.

BELLACOR
ARCHITECTURE & DESIGN INC.

PROJECT: 125 NAPIER STREET
LOCATION: HAMILTON, ON
NO. SHEETS: 13/27

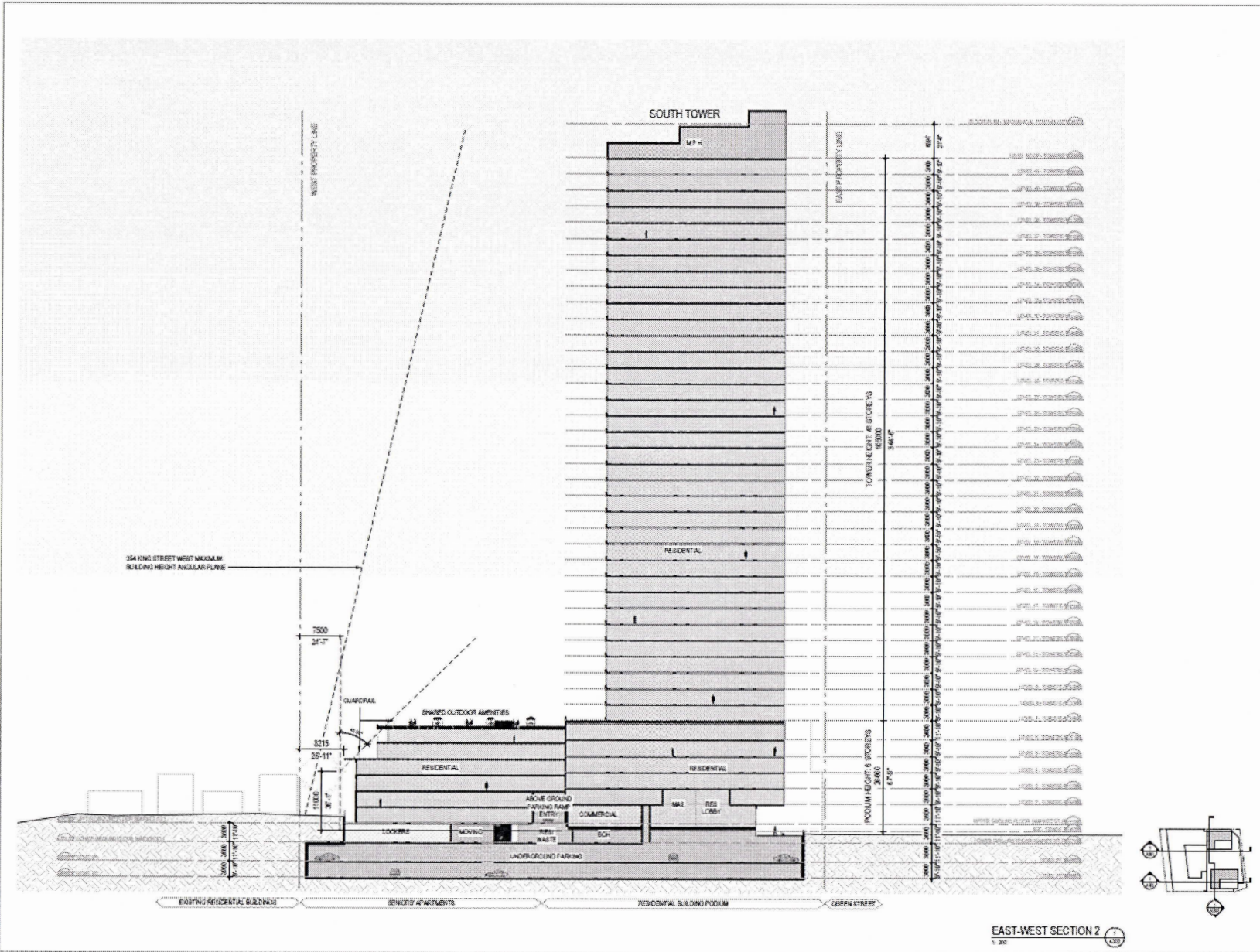
DATE: 2023-01-01
SCALE: 1" = 20'

DRAWN BY: JSA
DATE: 2023-01-01
PROJECT NO.: 2023-01-01

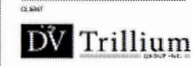
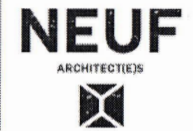
CONTRACTOR: CDS
SCALE: 1" = 20'

SITE PLAN AT ROOF

A 101



- DRAWING NOTES**
1. These architectural drawings are the sole property of MTE and shall not be reproduced, stored in a retrieval system, or transmitted in any form or by any means, electronic, mechanical, photocopying, recording, or by any information storage and retrieval system, without the prior written permission of MTE.
 2. All dimensions shall be taken as shown on the drawings unless otherwise specified.
 3. The architect is not liable for any errors, omissions, or inaccuracies in the drawings or for any consequences arising therefrom.
 4. The drawings are to be used only for the project and site shown.
- PERMITTED CONSULTANTS**
- A. J. Clark and Associates Ltd.**
20 West Beaver Creek, Suite 101, Richmond Hill, ON L4B 1P7
T: 905.882.7771 | www.ajc.ca
- CONSULTANTS**
- MTE Consultants Inc.**
105 South York Road, Suite 101, Oakville, ON L6H 5M4
T: 905.832.2222 | www.mte.ca
- ARCHITECTS**
- NEUF architecte**
6000 Steeles Ave. East, Unit 100, Scarborough, ON M1V 5P8
T: 416.291.8888 | www.neufarchitecte.com



PROJECT
125 NAPIER STREET
LOCATION
HAMILTON, ON N6C 1S7

NO. REVISION
A 100% PERMITS (24/24) 2024.04.02

DRAWN BY
JAK

CHECKED BY
CS/SL/KC

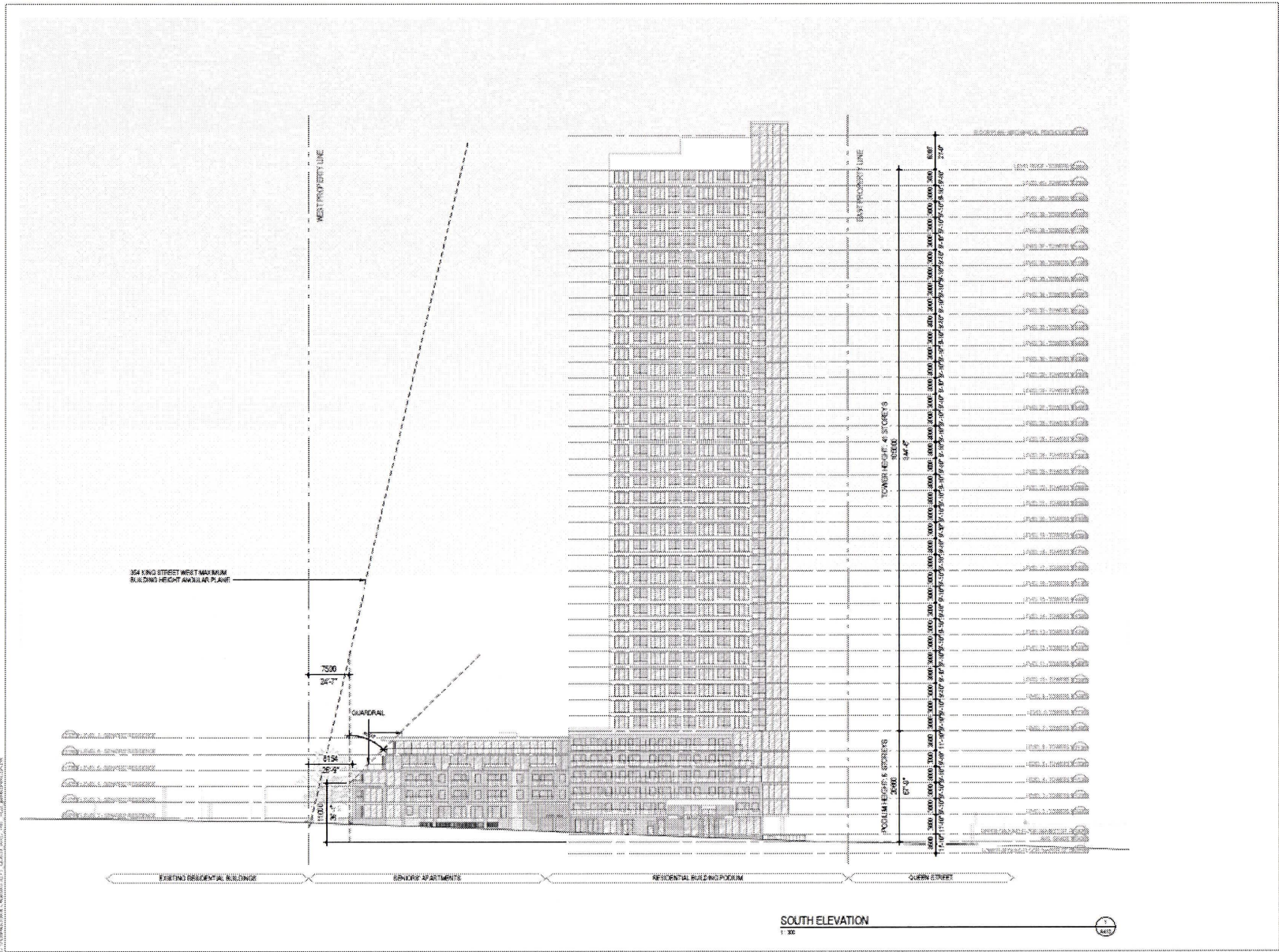
DATE (yy-mm-dd)
2023-07-21

SCALE
1" = 3/32"

EAST-WEST SECTION 2



EAST-WEST SECTION 2 (A302)



1. These architectural drawings are the sole property of NEUF Architect[REDACTED] and shall remain the property of NEUF Architect[REDACTED].
 2. No alteration or modification to these drawings shall be made without the written consent of NEUF Architect[REDACTED].
 3. The architect is not responsible for the accuracy of the information provided by the client.
 4. The construction of these drawings shall be in accordance with the applicable building codes.

PLANNING CONSULTANTS
A. J. Clarke and Associates Ltd.
 25 Main Street West, Suite 200, Hamilton, Ontario L8P 1A7
 TEL: 905.571.1111 | www.ajclarke.com

MTE Consultants Inc.
 315 Dundas Street East, Suite 200, Hamilton, Ontario L8P 1A7
 TEL: 905.571.1111 | www.mte.com

RWDI
 400 King Street West, Suite 200, Hamilton, Ontario L8P 1A7
 TEL: 905.571.1111 | www.rwdi.com

adesso design inc.
 80 King Street West, Suite 200, Hamilton, Ontario L8P 1A7
 TEL: 905.571.1111 | www.adessodesign.com

NEUF architect[REDACTED]
 400 King Street West, Suite 200, Hamilton, Ontario L8P 1A7
 TEL: 905.571.1111 | www.neufarchitect.com

NEUF ARCHITECT[REDACTED]
 ARCHITECTS

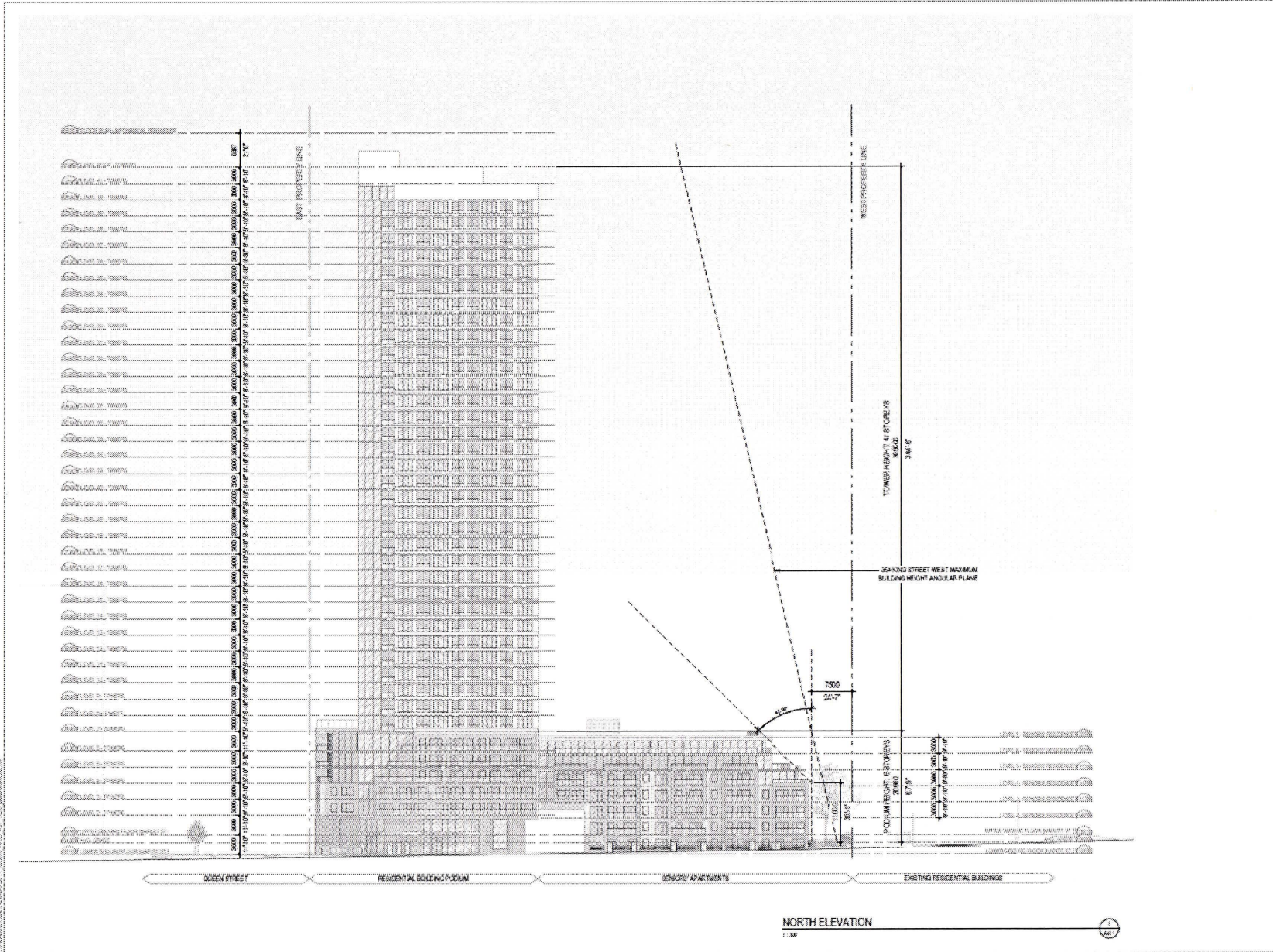
DV Trillium
 BELLEFleur

125 HAPIER STREET
 LOCATION: HAMILTON, ON
 HP PROJECT: 13071

DRAWN BY: JAK
 DATE: 2024-04-10
 DRAWING TITLE: ELEVATION - SOUTH

CHECKED BY: C. BELL
 DATE: 2024-04-10
 DRAWING TITLE: ELEVATION - SOUTH

A410



GENERAL NOTES

- These drawings are prepared for the use of the client and are not to be used for any other purpose without the written consent of the architect.
- The architectural scope of this contract shall be strictly as indicated herein.
- The architect shall not be responsible for the accuracy of the data furnished by the client.
- The drawings are to be read in accordance with the contract documents.

PLANNING CONSULTANTS

A. J. Clarke and Associates Ltd.
25 MacKay Street, Suite 200, Hamilton, Ontario L8N 2K7
T: (905) 571-1111 | www.ajclarke.com

CNA

MTE Consultants Inc.
1018 Bloor Street West, Suite 201, Toronto, Ontario M6H 1L9
T: (416) 593-3333 | www.mte.com

ENVIRONMENTAL STUDY

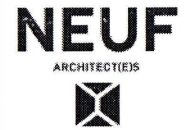
ENVIRONMENTAL STUDY
101 Bloor Street West, Suite 201, Toronto, Ontario M6H 1L9
T: (416) 593-3333 | www.mte.com

LANDSCAPE

adesso Design Inc.
25 MacKay Street, Suite 200, Hamilton, Ontario L8N 2K7
T: (905) 571-1111 | www.adesso.com

ARCHITECTS

NEUF architects
4 Market Street Suite 101, Toronto, Ontario M5E 1H9
T: (416) 593-3333 | www.neuf.com



PROJECT

125 NAPIER STREET

LOCATION: HAMILTON, ON

NO. PROJECT: 15075

REV.

NO.	DESCRIPTION	DATE
1	PRELIMINARY DRAWING	SEP 2017

DESIGNED BY: JJA

DRAWN BY: CPEL

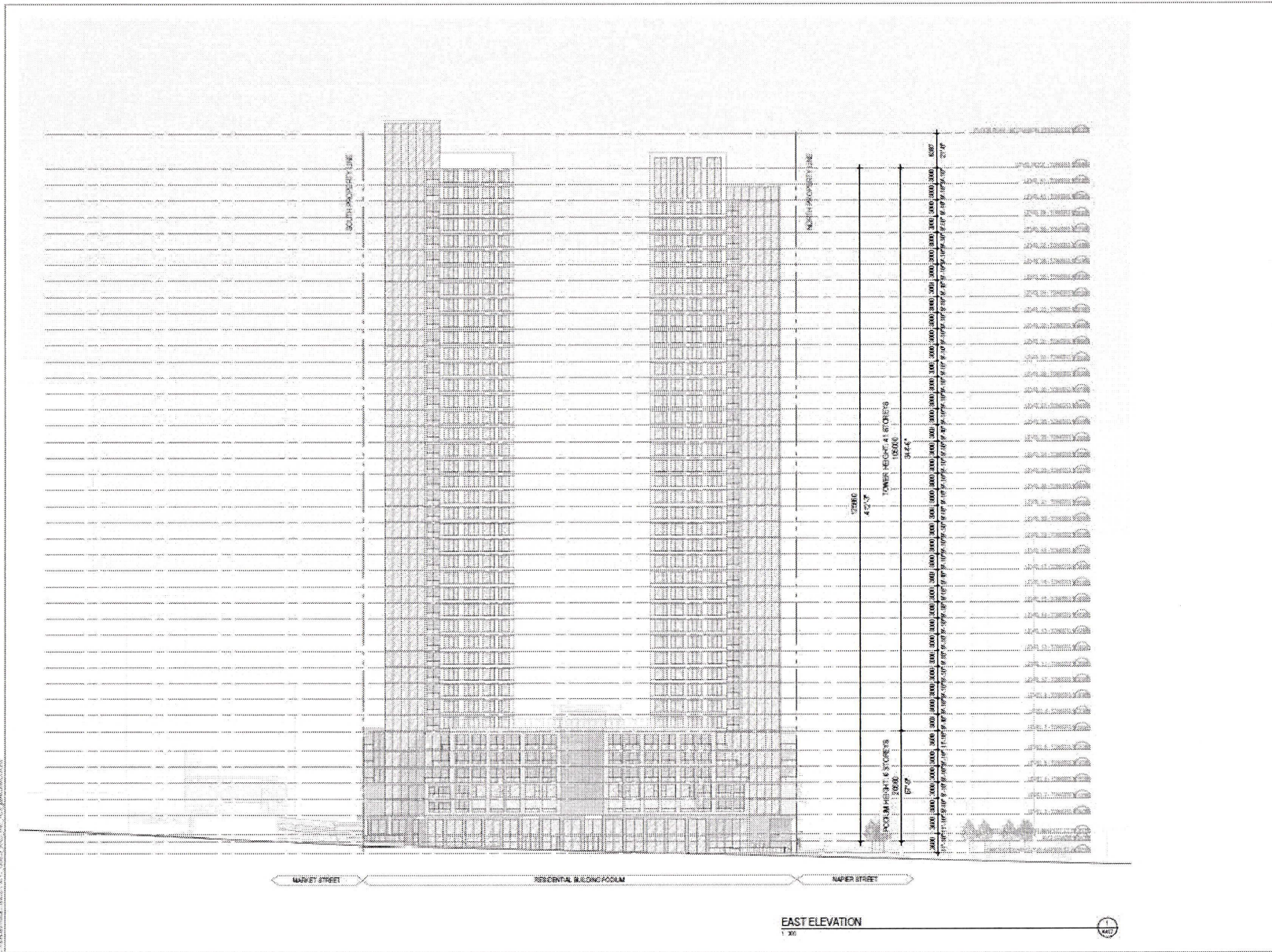
CHECKED BY: CPEL

DATE: 2023-04-11

SCALE: 1:500

ELEVATION - NORTH





GENERAL NOTES

1. These elevations are to be used in conjunction with the architectural drawings of the project and are not to be used in isolation.
2. All elevations are to be shown in accordance with the architectural drawings of the project.
3. The architect is not responsible for the accuracy of the information provided in these elevations.
4. The architect is not responsible for the accuracy of the information provided in these elevations.

PLANNING CONSULTANTS

A. J. Clark and Associates Ltd.
20 York Street, Suite 400, Hamilton, Ontario L8N 2P7
T: 905.571.1111 | www.ajclark.com

CAD

MTE Consultants Inc.
107 Dundas Street West, Suite 1000, Toronto, Ontario M5G 1R8
T: 416.593.8882 | www.mte.com

ARCHITECT

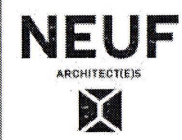
RWD3
300 Bloor Street West, Suite 2000, Toronto, Ontario M5S 1A5
T: 416.593.8882 | www.rwd3.com

STRUCTURAL

Stantec Design Inc.
20 York Street, Suite 400, Hamilton, Ontario L8N 2P7
T: 905.571.1111 | www.stantecdesign.com

MECHANICAL

NEUF architecte(s)
1 Market Street Suite 800, Toronto, Ontario M5E 1H7
T: 416.593.8882 | www.neufarchitecte.com



PROJECT

125 NAPIER STREET

LOCATION: HAMILTON, ON

NO. PROJECT: 130715

NO. REVISIONS: 04/16 130715-04-01

DATE: 2023-01-01

PROJECT: 130715

DRAWN BY: JJA

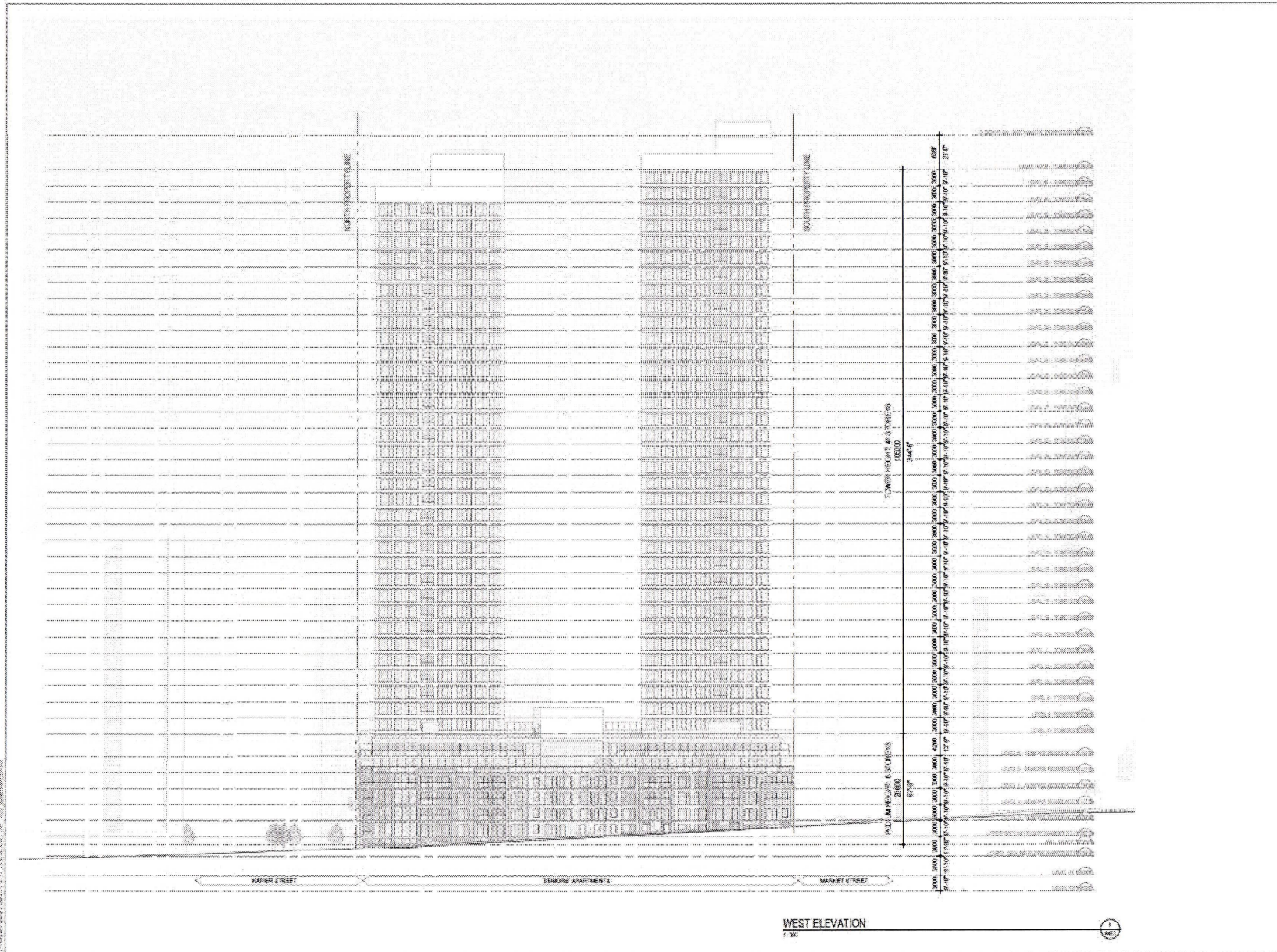
CHECKED BY: CRE/K

DATE: 2023-01-01

SCALE: 1:20

ELEVATION - EAST





1. These architectural drawings are the property of NEUF Architecte Inc. and shall remain the property of NEUF Architecte Inc. if they are not used for the project for which they were prepared.
 2. No person shall copy or reproduce these drawings without the written permission of NEUF Architecte Inc.
 3. The architect and/or engineer of record shall not be responsible for any errors or omissions in these drawings or for any consequences arising therefrom.
 4. The drawings shall be used only for the project for which they were prepared.

A. J. Clarke and Associates Ltd.
 20 Main Street West, Suite 400, Hamilton, Ontario L8R 3P7
 T 905.521.2700 | www.ajclarke.com

RWED
 65 Bevington Drive, South Orléans, Québec J0L 1P7
 T 514.853.4315 | www.rwed.com

address design Inc.
 60 Av. West Street, Suite 200, Hamilton, Ontario L8R 3P7
 T 905.521.2700 | www.addressdesign.com

NEUF architecte inc.
 4 Market Street, Suite 100, Hamilton, Ontario L8R 3P7
 T 905.521.2700 | www.neufarchitecte.com

NEUF
 ARCHITECTES

DV Trillium
 BELLAGOR

125 NAPIER STREET
 HAMILTON, ON L8R 3P7

DRAWN BY: J.S. DATE: 2023-01-24
 CHECKED BY: C.S.L. DATE: 2023-01-24

ELEVATION - WEST