

## Photographs

All images taken by City of Hamilton staff in June 2018 unless otherwise noted.



Figure 1: Front (north) elevation.



Figure 2: Looking south down Reynold Street from Dundas Street East, showing the Eager House on the right.



Figure 3: Front (north) elevation (Royal LePage, 2024)



Figure 4: Detail view of front porch and entryway (Royal LePage, 2024)



Figure 5: Front Elevation, 1982 (Flamborough Archives)



Figure 6: Side (west) elevation, 1982 (Flamborough Archives)

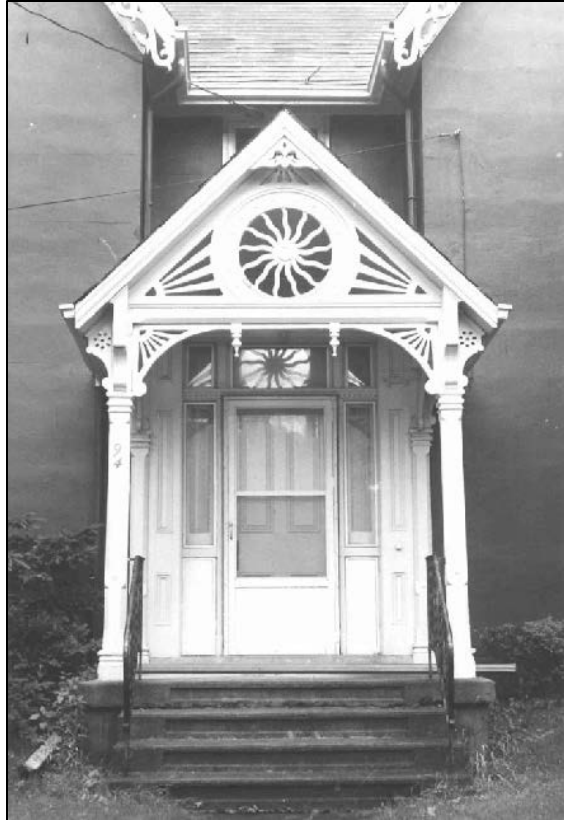


Figure 7: Detail view of front porch and entryway, 1982 (Flamborough Archives)



Figure 8: Side west elevation and east elevations, 1982 (Flamborough Archives)



Figure 9: West side elevation of rear wing, 1982 (Flamborough Archives)



Figure 10: Looking west along Dundas Street to Bridge



Figure 11: Looking west along Dundas Street to Bridge, c. 1907 (Flamborough Archives)



Figure 12: Looking Southeast across Grindstone Creek, c. 1906-1910 (Flamborough Archives)



Figure 13: Detail view of Subject Property, showing roofline with decorative elements, c.1906-1910 (Flamborough Archives)



Figure 14: Looking East across Grindstone Creek and up Vinegar Hill. Subject Property on right. c. 1900 (Flamborough Archives)



Figure 15: Industries along Grindstone Creek, c. 1900 (Flamborough Archives)

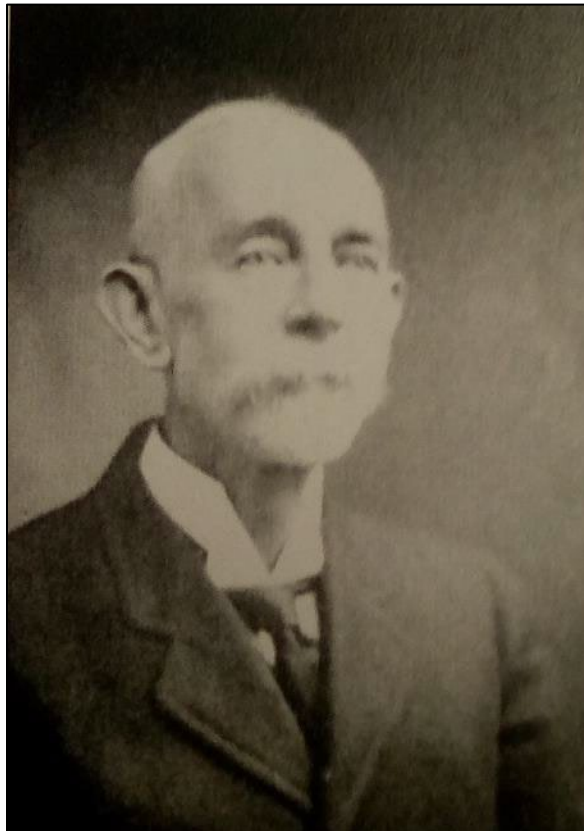


Figure 16: James E. Eager (1842-1921), (The Mills of Waterdown)





Figure 17: Eager General Store, c. 1904 (Flamborough Archives)

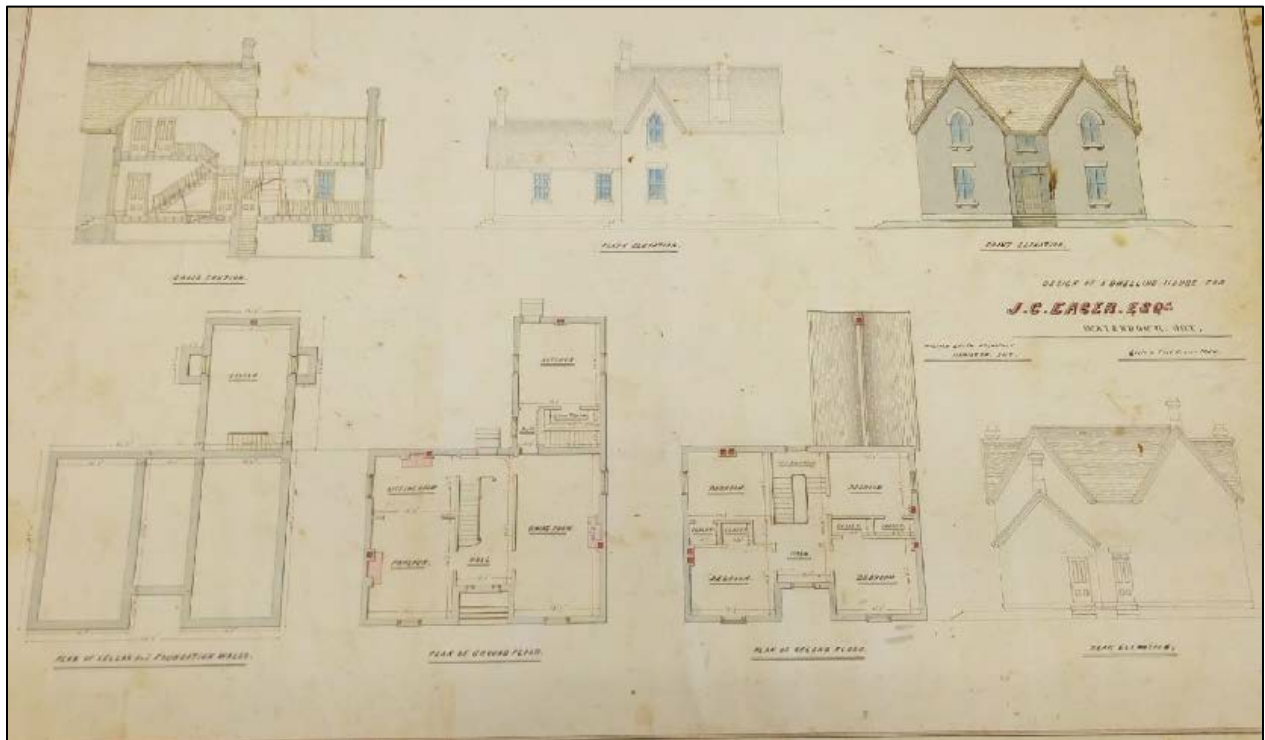


Figure 18: Architectural drawing of subject property by William Leith, undated (Flamborough Archives)

James Eagers porch

|                                       |              |
|---------------------------------------|--------------|
| 100 ft of 1" dressed lumber           | 3.00         |
| Front door with lock hinges + hanging | 5.00         |
| Side " " " " " "                      | 5.00         |
| Scantling                             | 1.00         |
| Sash + glass                          | 3.00         |
| Work + mouldings                      | 8.00         |
|                                       | <u>25.00</u> |

Figure 19: Entry in John Reid's workbook for James Eager's porch, c. 1904  
(Flamborough Archives)