

**Photographs**

All images taken by City of Hamilton staff in June 2024 unless otherwise noted.



Figure 1: North elevation.



Figure 2: North elevation (Woolcott Real Estate, Retrieved May 7, 2024 from <https://woolcott.ca/property-listing/6-websters-falls-road/>).



Figure 3: Aerial view of subject property (Woolcott Real Estate, Retrieved May 7, 2024 from <https://woolcott.ca/property-listing/6-websters-falls-road/>).

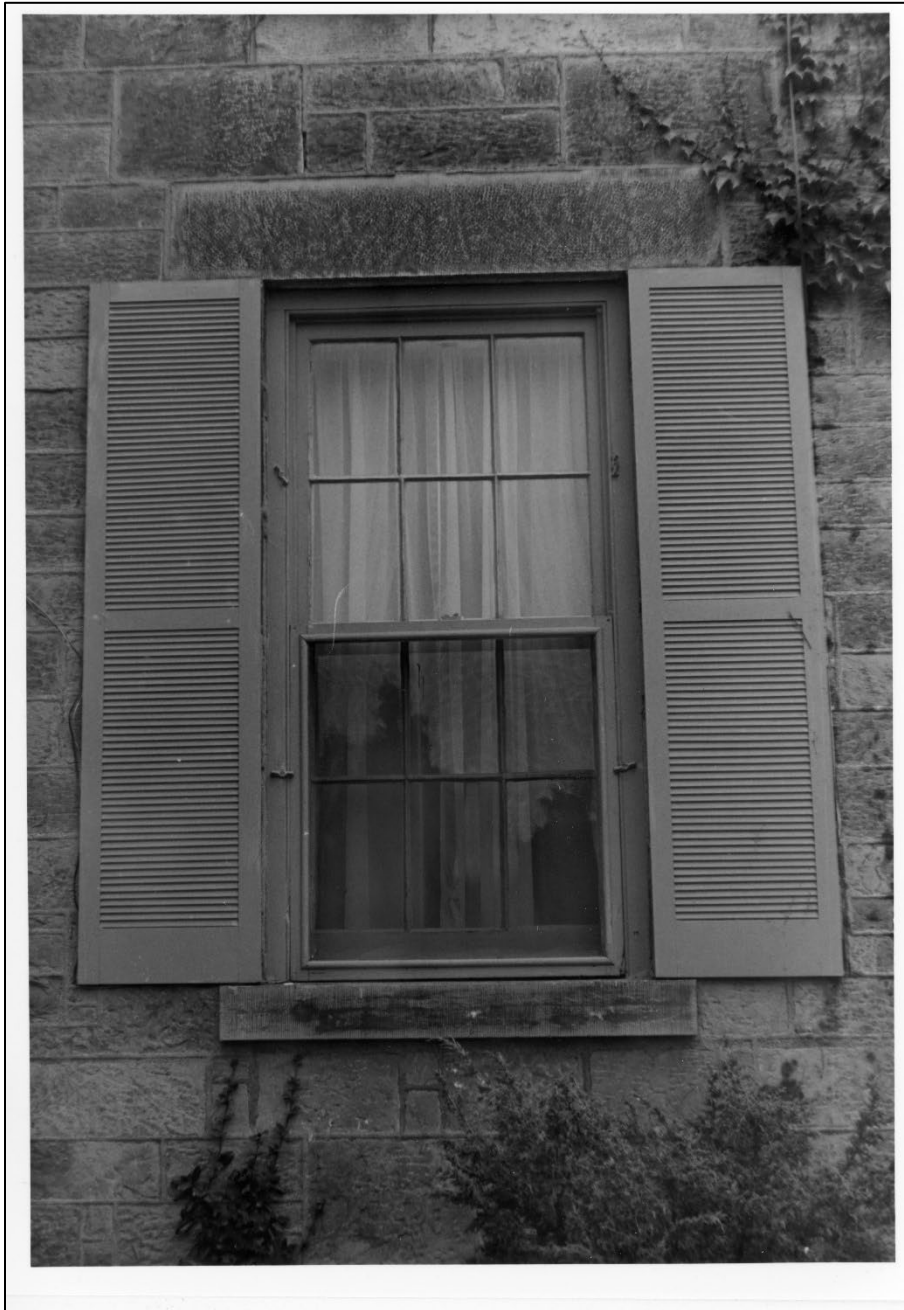


Figure 4: Detail view of window (Flamborough Archives circa 2000).

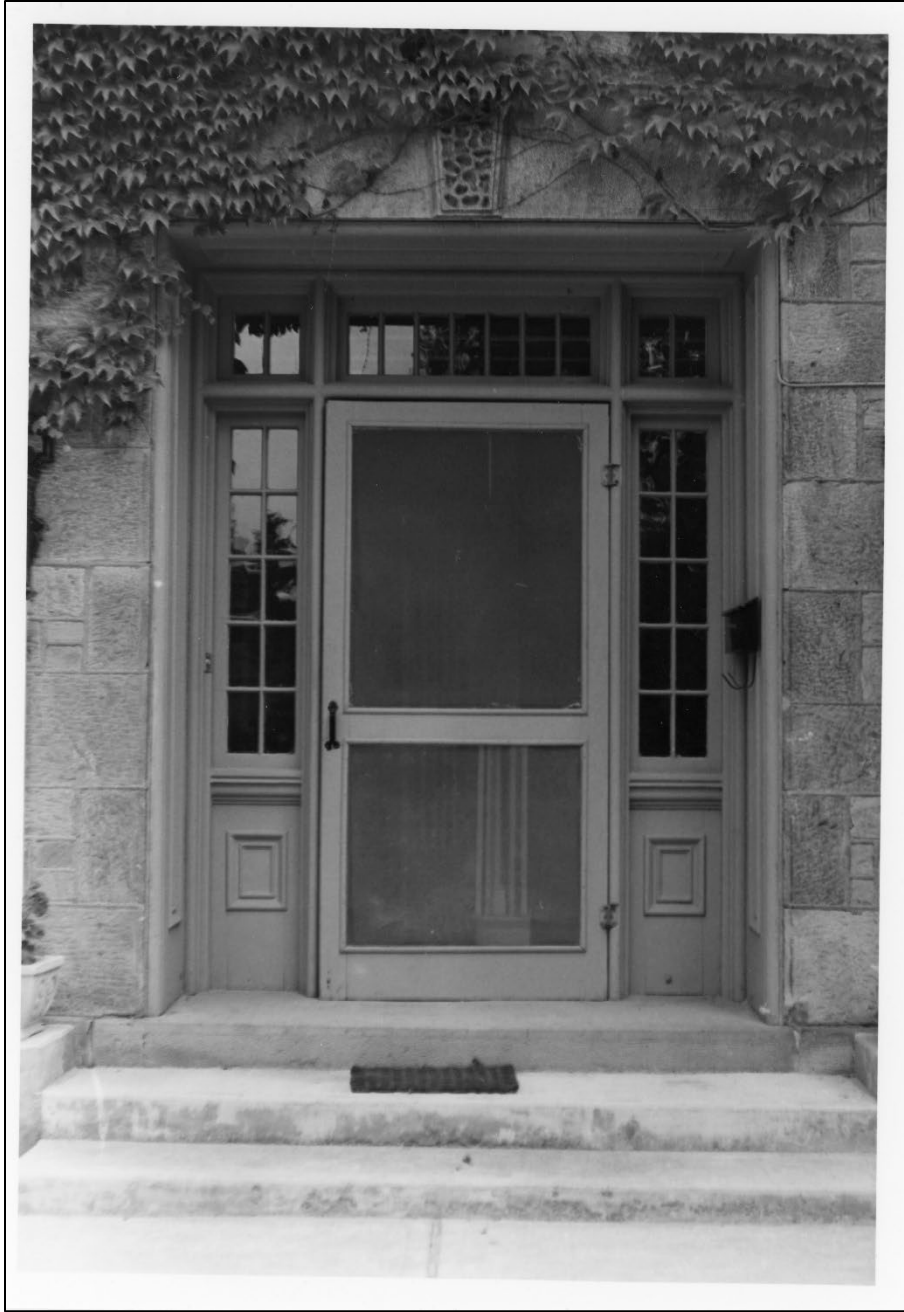


Figure 5: Detail view of entrance (Flamborough Archives, circa 2000).



Figure 6: Detail view of chimney on eastern elevation (Flamborough Archives, circa 2000).



Figure 7: View of south elevation (FreshBrick, Retrieved May 7, 2024 from <https://www.freshbrick.ca/2022/09/no-stone-left-un-yearned.html>).



Figure 8: View of South Elevation (FreshBrick, Retrieved X from <https://www.freshbrick.ca/2022/09/no-stone-left-un-yearned.html>).



Figure 9: Ashbourne Mill with subject property in background, 1859 (Surtrees Map).



Figure 10: Webster's Dam and Ashbourne Mill ruins, subject property in background, early twentieth century (Flamborough Archives).



Figure 11: Joseph Webster II (1809-1886) (Websters of West Flamborough).



Figure 12: Grave of Joseph Webster II at Webster's Fall.