

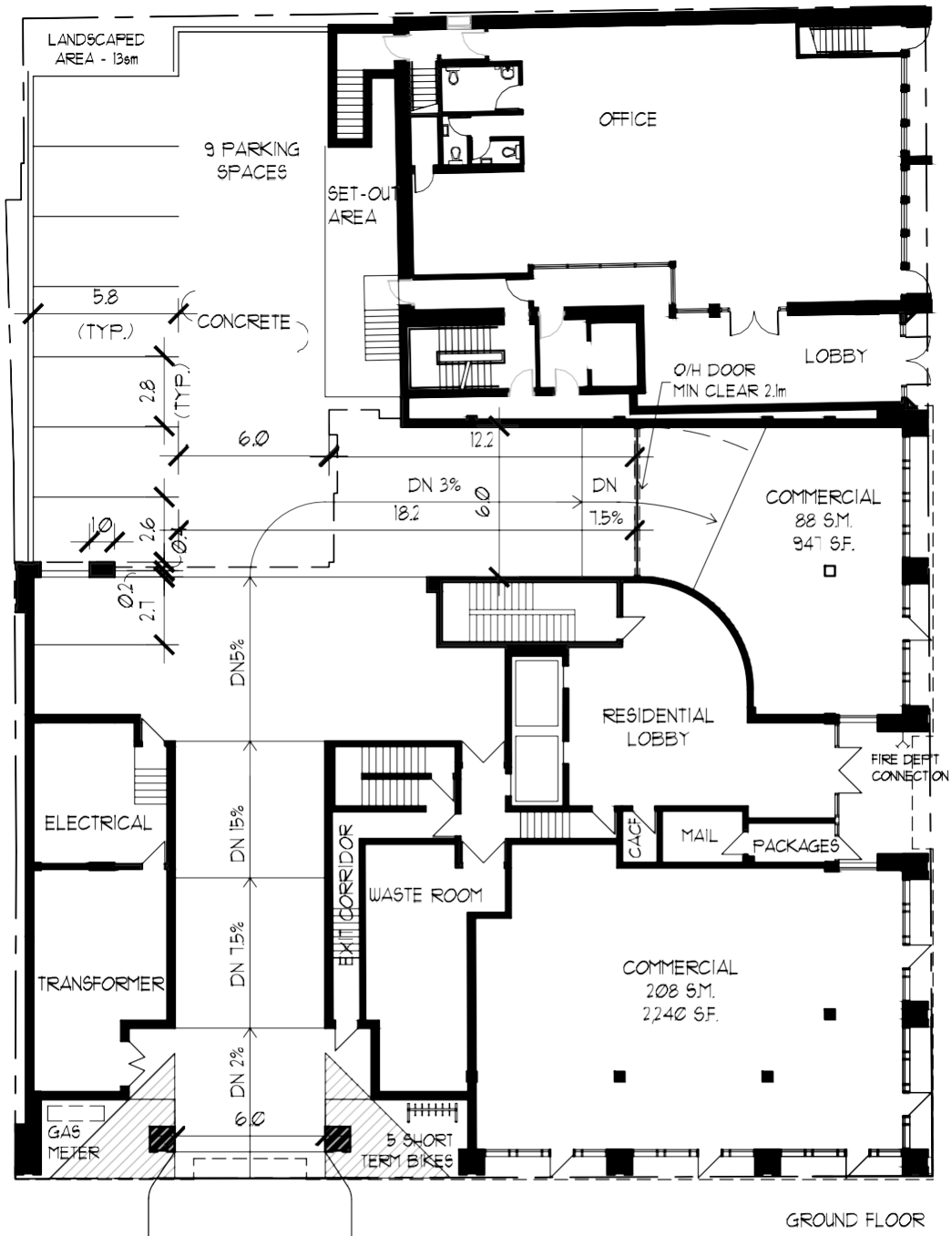
JAMES AND BARTON REDEVELOPMENT
CORE URBAN
309/325 JAMES ST. N.

SCALE:
NTS
DATE:
NOV. 2022

LINTACK ARCHITECTS
INCORPORATED
244 JAMES STREET SOUTH,
HAMILTON, ONTARIO, L8P 3B3
T: 905.522.6165 • F: 905.522.2209
E: information@lintack.com
www.lintack.com

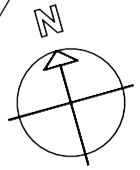
PRELIMINARY SITE PLAN
JOB No. 22.096
DWG. No. A0

A1 GROUND
OPTION H 2024-04-02



JAMES STREET NORTH

BARTON STREET



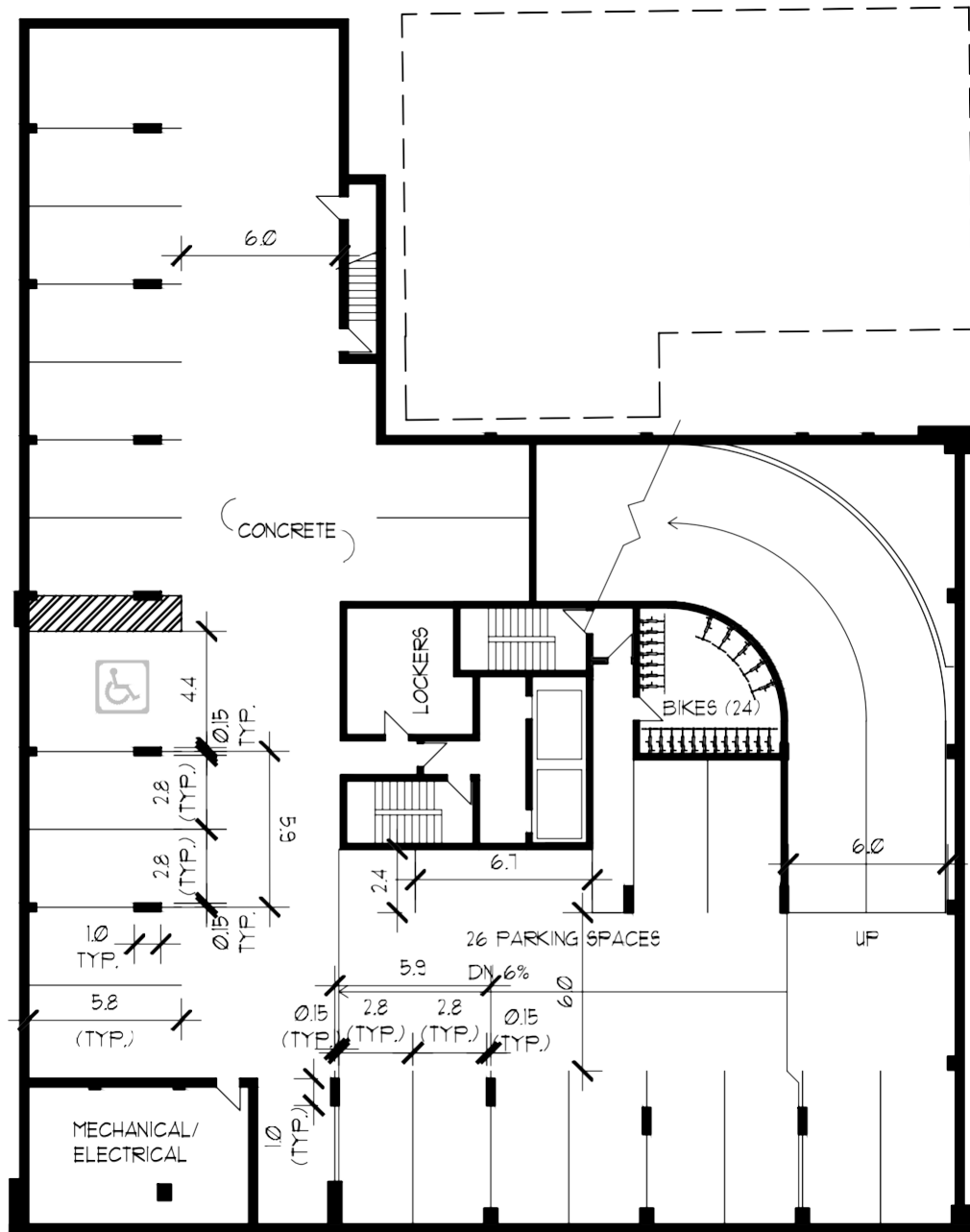
GROUND FLOOR

JAMES AND BARTON REDEVELOPMENT
CORE URBAN
309/325 JAMES ST. N.

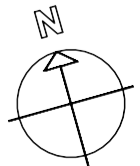
SCALE:
NTS
DATE:
NOV. 2022

LINTACK ARCHITECTS
INCORPORATED
244 JAMES STREET SOUTH,
HAMILTON, ONTARIO, L8P 3B3
T: 905.522.6165 • F: 905.522.2209
E: information@lintack.com
www.lintack.com

GROUND FLOOR
JOB No. 22.096
DWG. No. A1



LEVEL -2



JAMES AND BARTON REDEVELOPMENT
 CORE URBAN

309/325 JAMES ST. N.

SCALE:
 NTS

DATE:
 NOV. 2022

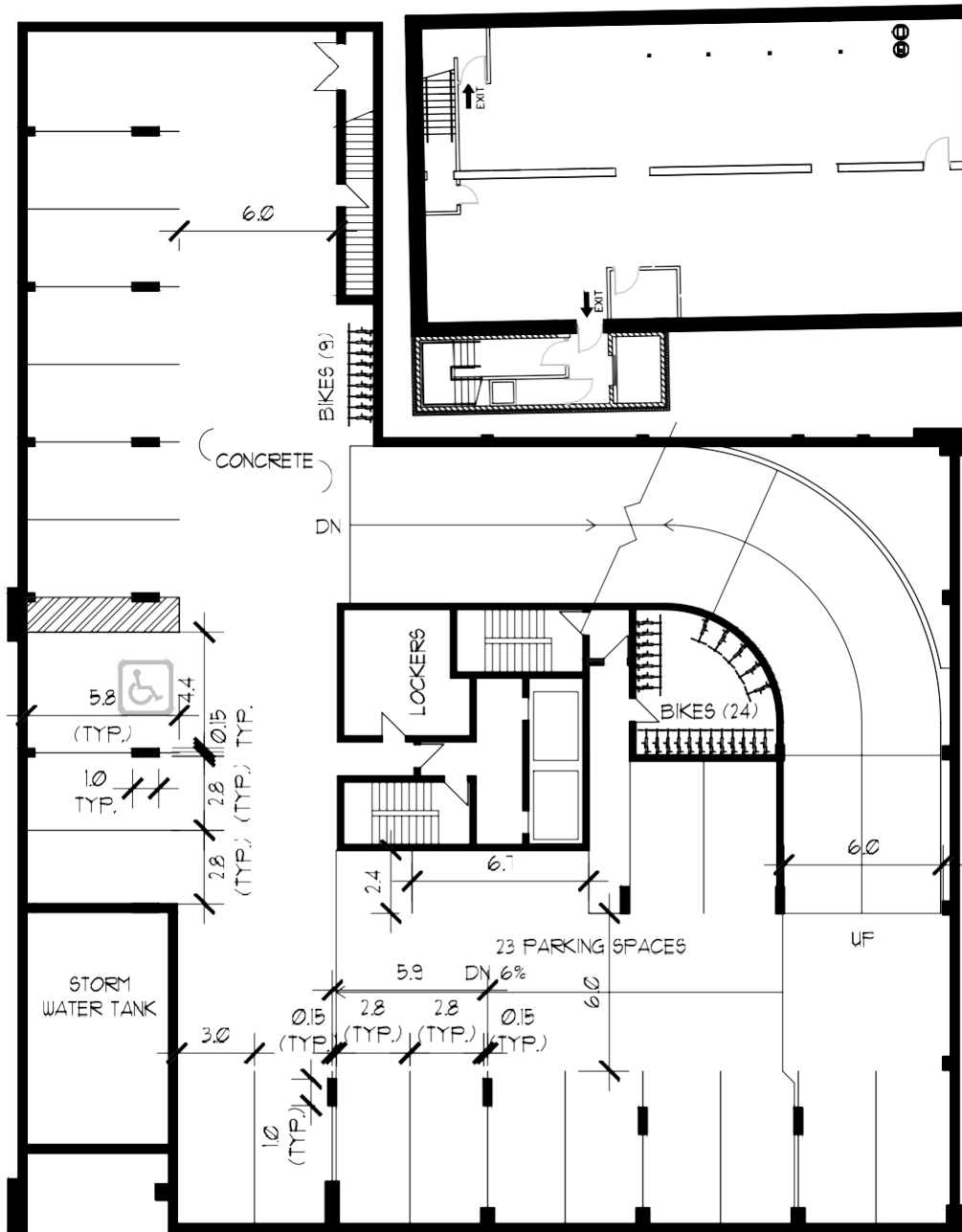
**LINTACK
 ARCHITECTS**

INCORPORATED
 244 JAMES STREET SOUTH,
 HAMILTON, ONTARIO, L8P 3B3
 T: 905.522.6165 • F: 905.522.2209
 E: information@lintack.com
 www.lintack.com

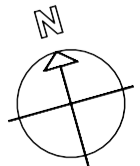
LEVEL -2

JOB No.
 22.096

DWG. No.
 A-2



LEVEL -1



JAMES AND BARTON REDEVELOPMENT
CORE URBAN

309/325 JAMES ST. N.

SCALE:

NTS

DATE:

NOV. 2022

**LINTACK
ARCHITECTS**

INCORPORATED
244 JAMES STREET SOUTH,
HAMILTON, ONTARIO, L8P 3B3
T: 905.522.6165 - F: 905.522.2209
E: information@lintack.com
www.lintack.com

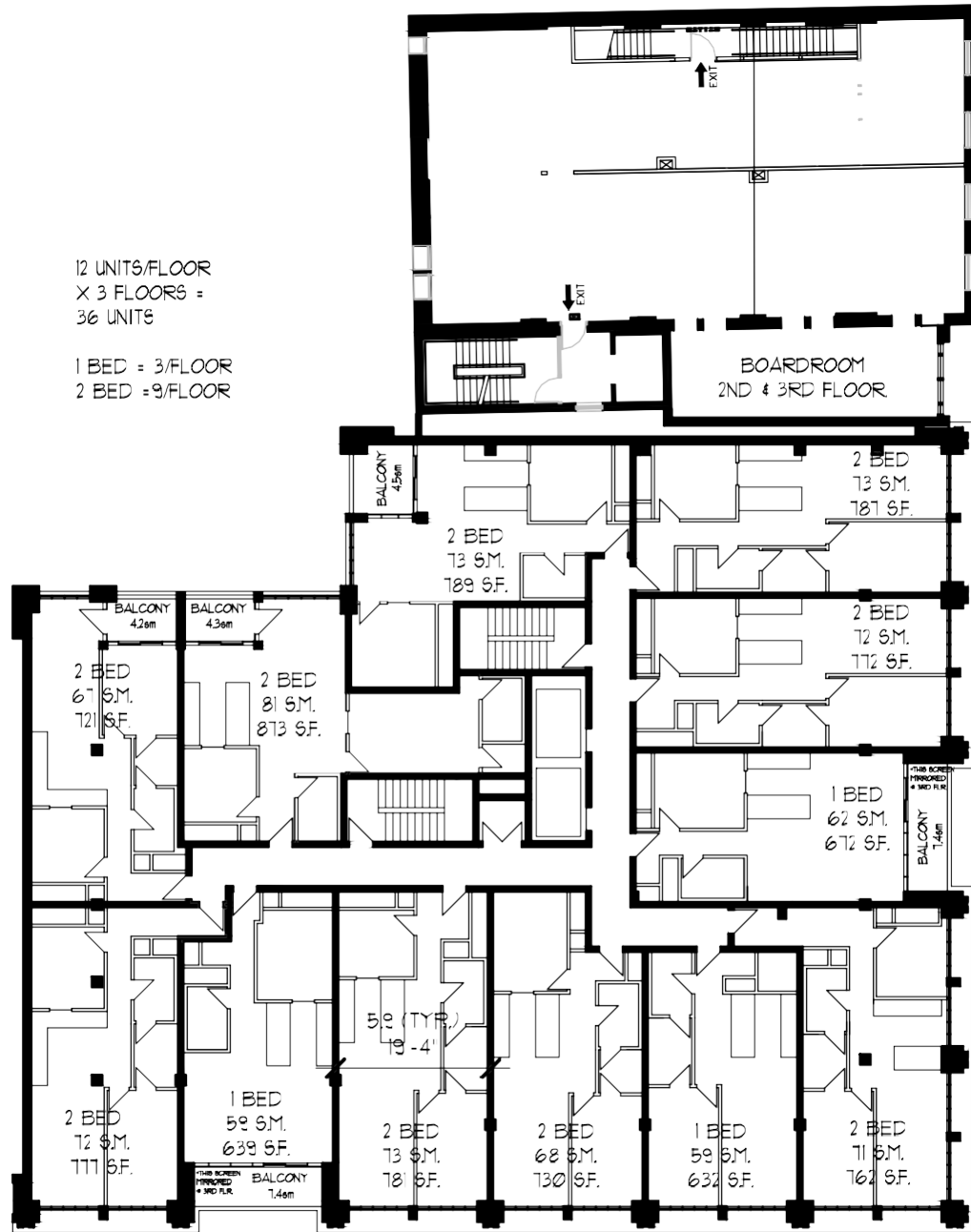
LEVEL -1

JOB No.

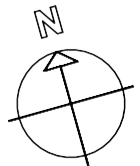
22.096

DWG. No.

A-1



SECOND - FOURTH FLOOR



JAMES AND BARTON REDEVELOPMENT
 CORE URBAN

309/325 JAMES ST. N.

SCALE:
 NTS

DATE:
 NOV. 2022

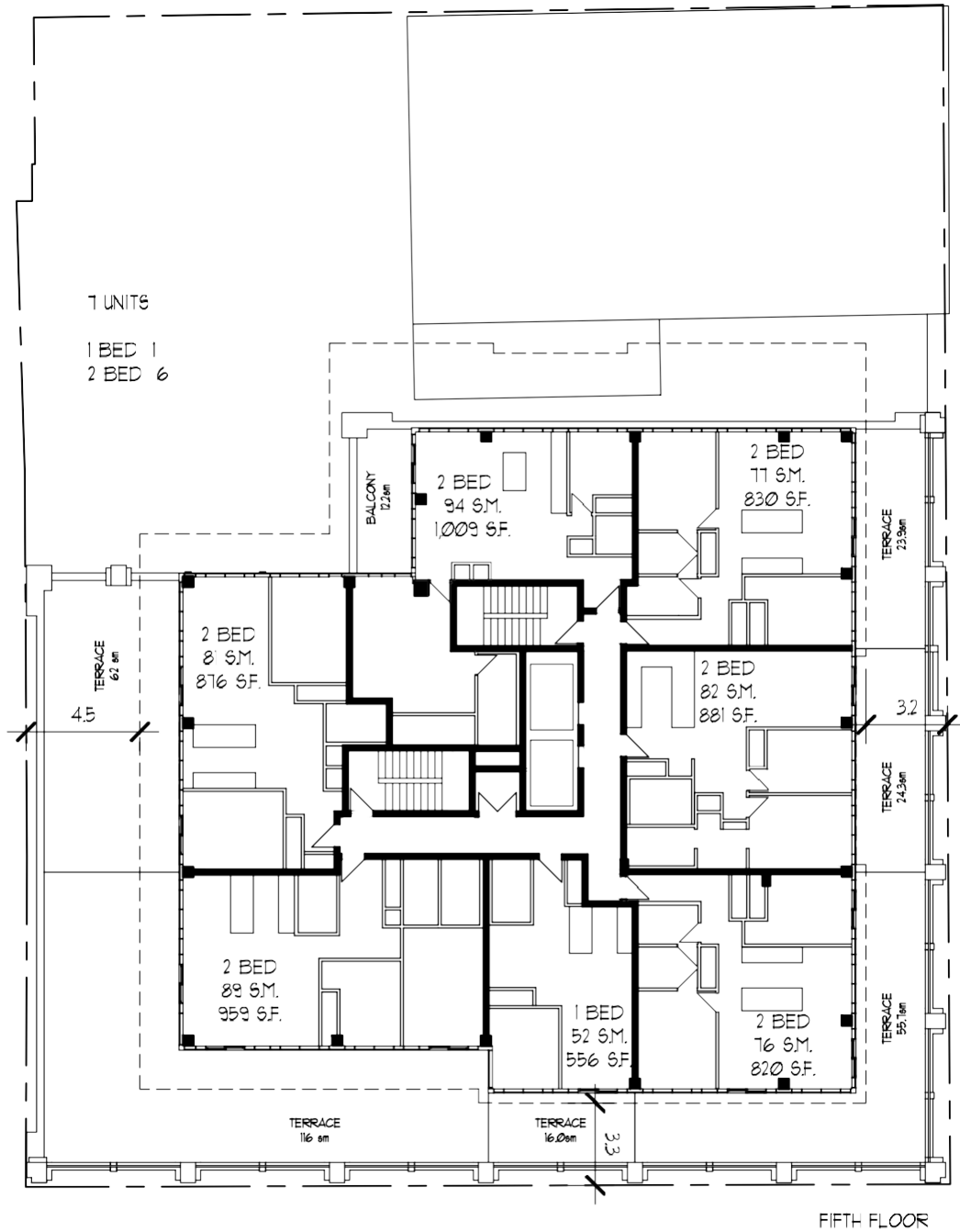
**LINTACK
 ARCHITECTS**

INCORPORATED
 244 JAMES STREET SOUTH,
 HAMILTON, ONTARIO, L8P 3B3
 T: 905.522.6165 • F: 905.522.2209
 E: information@lintack.com
 www.lintack.com

2ND - 4TH FLOORS

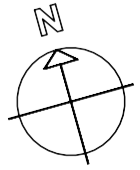
JOB No.
 22.096

DWG. No.
 A2



7 UNITS
 1 BED 1
 2 BED 6

FIFTH FLOOR



JAMES AND BARTON REDEVELOPMENT
 CORE URBAN
 309/325 JAMES ST. N.

SCALE:
 NTS

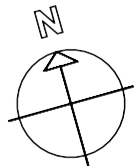
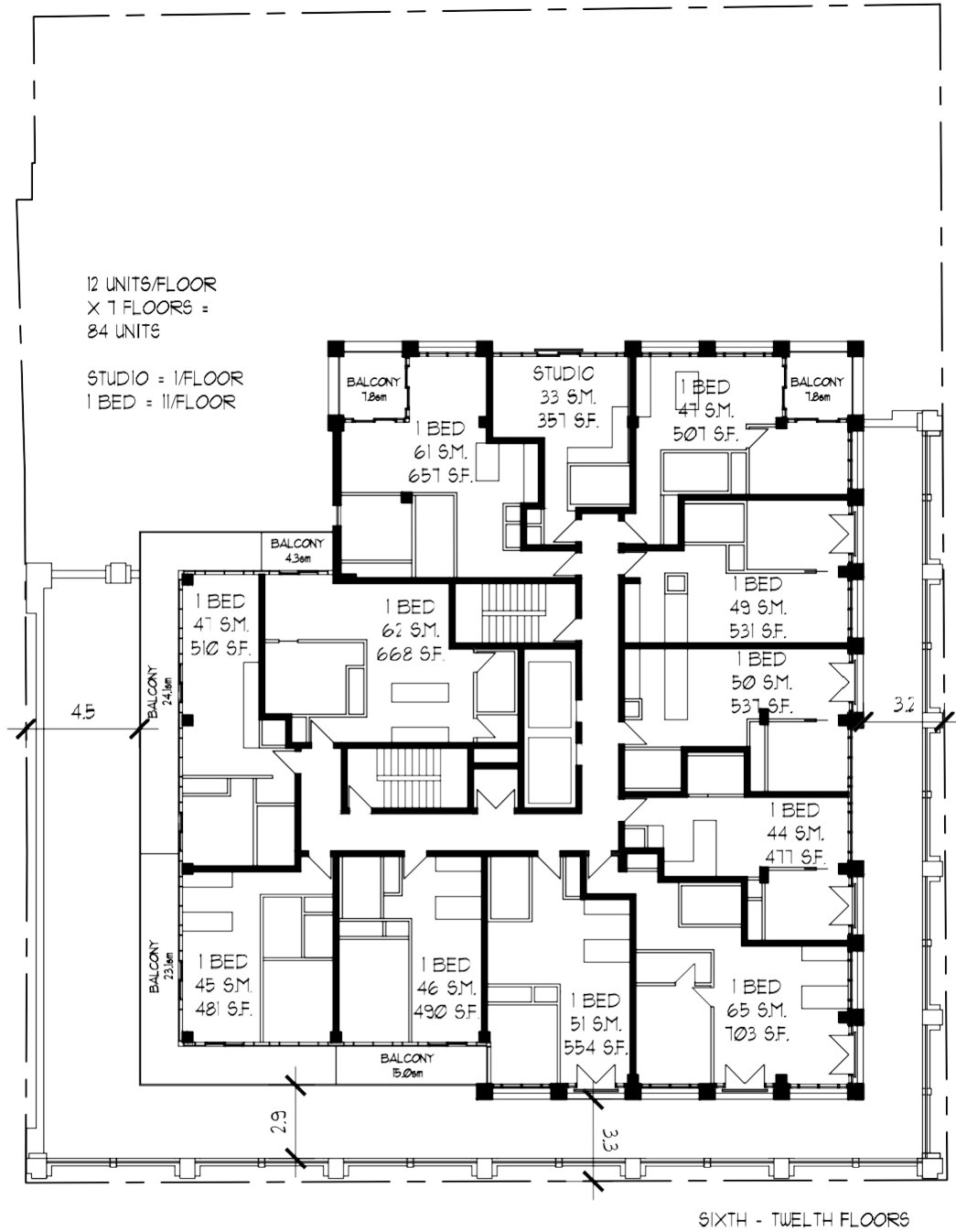
DATE:
 NOV. 2022

LINTACK ARCHITECTS
 INCORPORATED
 244 JAMES STREET SOUTH,
 HAMILTON, ONTARIO, L8P 3B3
 T: 905.522.6165 • F: 905.522.2209
 E: information@lintack.com
 www.lintack.com

FIFTH FLOOR

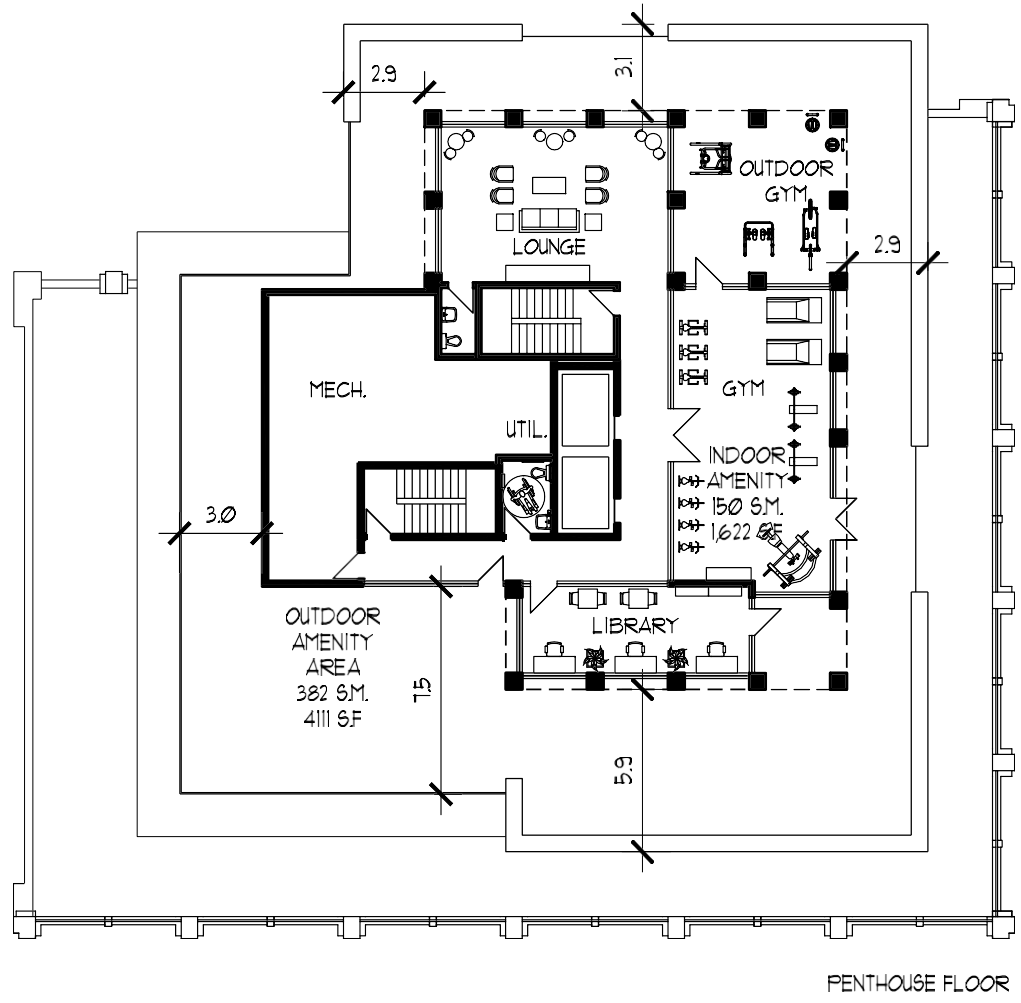
JOB No.
 22.096

DWG. No.
 A3



JAMES AND BARTON REDEVELOPMENT CORE URBAN 309/325 JAMES ST. N.	SCALE: NTS	LINTACK ARCHITECTS INCORPORATED 244 JAMES STREET SOUTH, HAMILTON, ONTARIO, L8P 3B3 T: 905.522.6165 - F: 905.522.2209 E: information@lintack.com www.lintack.com	6TH - 12TH FLOOR	
	DATE: NOV. 2022		JOB No. 22.096	DWG. No. A4

A5 ROOFTOP
OPTION H 2024-04-02



<p>JAMES AND BARTON REDEVELOPMENT CORE URBAN 309/325 JAMES ST. N.</p>	<p>SCALE: NTS</p> <p>DATE: NOV. 2022</p>	<p>LINTACK ARCHITECTS INCORPORATED 244 JAMES STREET SOUTH, HAMILTON, ONTARIO, L8P 3B3 T: 905.522.6165 • F: 905.522.2209 E: information@lintack.com www.lintack.com</p>	<p>ROOFTOP</p> <p>JOB No. 22.096</p> <p>DWG. No. A5</p>
---	--	---	--

A7 EAST ELEV
OPTION H 2024-04-02



JAMES AND BARTON REDEVELOPMENT
CORE URBAN

309/325 JAMES ST. N.

SCALE:
NTS

DATE:
NOV. 2022

LINTACK
ARCHITECTS
INCORPORATED
244 JAMES STREET SOUTH,
HAMILTON, ONTARIO, L8P 3B3
T: 905.522.6165 • F: 905.522.2209
E: information@lintack.com
www.lintack.com

EAST
ELEVATION

JOB No.
22.096

DWG. No.
A7

A8 SOUTH ELEV
OPTION H 2024-04-02



JAMES AND BARTON REDEVELOPMENT
CORE URBAN

309/325 JAMES ST. N.

SCALE:
NTS

DATE:
NOV. 2022

LINTACK
ARCHITECTS
INCORPORATED
244 JAMES STREET SOUTH,
HAMILTON, ONTARIO, L8P 3B3
T: 905.522.6165 • F: 905.522.2209
E: information@lintack.com
www.lintack.com

SOUTH
ELEVATION

JOB No.
22.096

DWG. No.
A8

A9 WEST ELEV
OPTION H 2024-04-02



JAMES AND BARTON REDEVELOPMENT
CORE URBAN

309/325 JAMES ST. N.

SCALE:
NTS

DATE:
NOV. 2022

LINTACK
ARCHITECTS
INCORPORATED
244 JAMES STREET SOUTH,
HAMILTON, ONTARIO, L8P 3B3
T: 905.522.6165 • F: 905.522.2209
E: information@lintack.com
www.lintack.com

WEST
ELEVATION

JOB No.
22.096

DWG. No.
A9

A10 NORTH ELEV
OPTION H 2024-04-02



JAMES AND BARTON REDEVELOPMENT
CORE URBAN

309/325 JAMES ST. N.

SCALE:
NTS

DATE:
NOV. 2022

LINTACK
ARCHITECTS
INCORPORATED
244 JAMES STREET SOUTH,
HAMILTON, ONTARIO, L8P 3B3
T: 905.522.6165 • F: 905.522.2209
E: information@lintack.com
www.lintack.com

NORTH
ELEVATION

JOB No.
22.096

DWG. No.
A10

A11 AERIAL
OPTION H 2024-04-02



JAMES AND BARTON REDEVELOPMENT
CORE URBAN
309/325 JAMES ST. N.

SCALE:
NTS

DATE:
NOV. 2022

**LINTACK
ARCHITECTS**
INCORPORATED
244 JAMES STREET SOUTH,
HAMILTON, ONTARIO, L8P 3B3
T: 905.522.6165 • F: 905.522.2209
E: information@lintack.com
www.lintack.com

AERIAL VIEW

JOB No.
22.096

DWG. No.
A11

A12 PERSPECTIVE
OPTION H 2024-04-02



JAMES AND BARTON REDEVELOPMENT
CORE URBAN

309/325 JAMES ST. N.

SCALE:
NTS

DATE:
NOV. 2022

**LINTACK
ARCHITECTS**
INCORPORATED
244 JAMES STREET SOUTH,
HAMILTON, ONTARIO, L8P 3B3
T: 905.522.6165 • F: 905.522.2209
E: information@lintack.com
www.lintack.com

PERSPECTIVE

JOB No.
22.096

DWG. No.
A12

A13 PERSPECTIVE
OPTION H 2024-04-02



JAMES AND BARTON REDEVELOPMENT
CORE URBAN

309/325 JAMES ST. N.

SCALE:
NTS

DATE:
NOV. 2022

LINTACK
ARCHITECTS
INCORPORATED
244 JAMES STREET SOUTH,
HAMILTON, ONTARIO, L8P 3B3
T: 905.522.6165 • F: 905.522.2209
E: information@lintack.com
www.lintack.com

PERSPECTIVE

JOB No.
22.096

DWG. No.
A13

A14 PERSPECTIVE
OPTION H 2024-04-02



JAMES AND BARTON REDEVELOPMENT
CORE URBAN

309/325 JAMES ST. N.

SCALE:
NTS

DATE:
NOV. 2022

**LINTACK
ARCHITECTS**
INCORPORATED
244 JAMES STREET SOUTH,
HAMILTON, ONTARIO, L8P 3B3
T: 905.522.6165 • F: 905.522.2209
E: information@lintack.com
www.lintack.com

PERSPECTIVE

JOB No.
22.096

DWG. No.
A14