

## Photographs

All photographs taken by City of Hamilton staff on August 28, 2023, unless otherwise noted.



Image 1: Front (east) elevation of property.



Image 2: Orton House, looking southwest from the intersection of Wilson Street East and Sulphur Springs Road.



Image 3: South elevation, looking north up Wilson Street East.



Image 4: Side (north) elevation fronting onto Sulphur Springs Road.



Image 5: Side (north) and rear (west) elevations and detached three-car garage looking south from Sulphur Springs Road.



Image 6: Detail of roofline on side (north) elevation, showing brackets and belvedere.



Image 7: Detail of belvedere looking south.



Image 8: Detail of belvedere windows and brackets.



Image 9: Detail of brackets on the north elevation at the intersection of the main building and the rear wing.



Image 10: Detail of brackets on western end of the north elevation of the rear wing.



Image 11: Detail of brackets on the eastern end of the north elevation.



Image 12: Detail of contrasting brick masonry on front (east) elevation.



Image 13: Detail of contrasting brick masonry on side (south) elevation.



Image 14: Detail of the projecting gable-roofed side entrance on the north elevation.



Image 15: Detail of side entrance on the north elevation.



Image 16: Detail of stone foundation on the rear wing northwest corner.





Image 17: Detail of stone foundation on south elevation.



Image 18: East Elevation, c.2014 (Historical Hamilton, Retrieved September 6, 2023.  
<https://historicalhamilton.com/area/ancaster/dr-henry-orton-house/>)



Image 19: North elevation looking from Sulphur Springs Road, circa 1977 (Ancaster LACAC).



Image 20: Front (east) elevation, circa 1977, showing the former projecting front gable and covered front porch (Ancaster LACAC).



Image 21: West elevation, circa 1977 (Ancaster LACAC).



Image 22: South elevation, circa 1977 (Ancaster LACAC).



Image 23: Detail of side entrance, circa 1977, showing former bargeboard detail in the projecting gable (Ancaster LACAC).



Image 24: Detail of balcony, front (east) elevation circa 1977 (Ancaster LACAC).

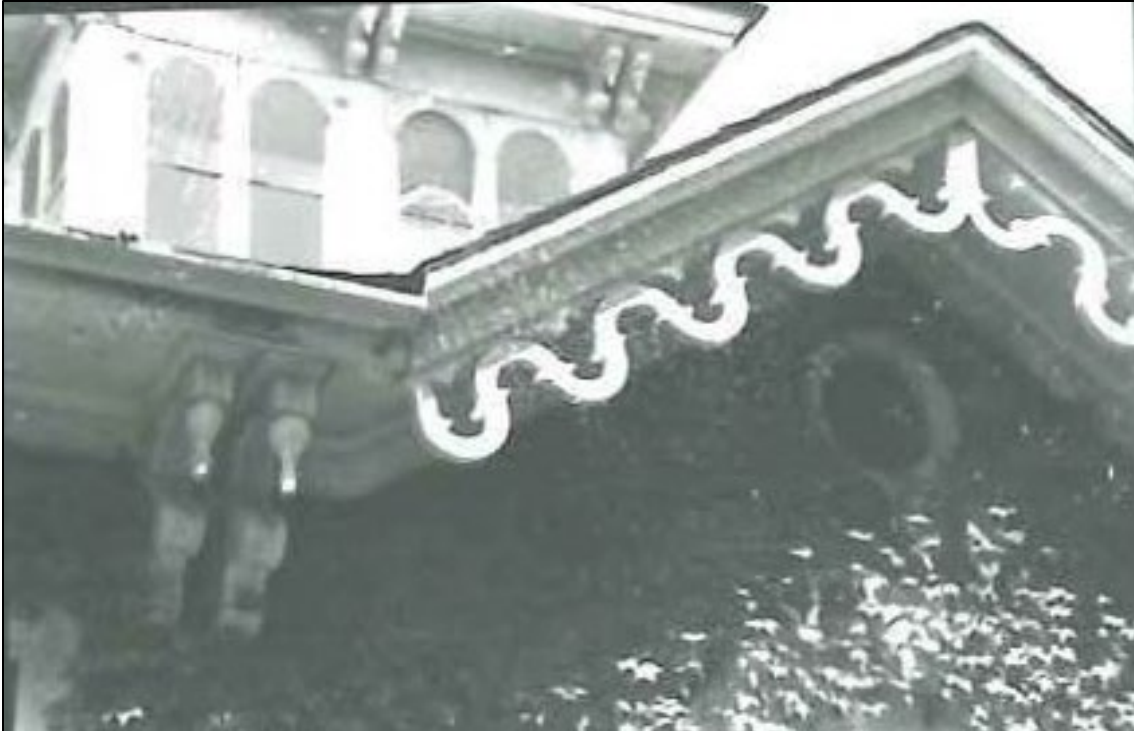


Image 25: Detail of barge boarding and brackets, circa 1977 (Ancaster LACAC).



Image 26: Detail of brackets, circa 1977 (Ancaster LACAC).



Image 27: Detail of belvedere and chimney, circa 1977 (Ancaster LACAC).



Image 28: Detail of front balcony and entrance, circa 1977 (Ancaster LACAC).

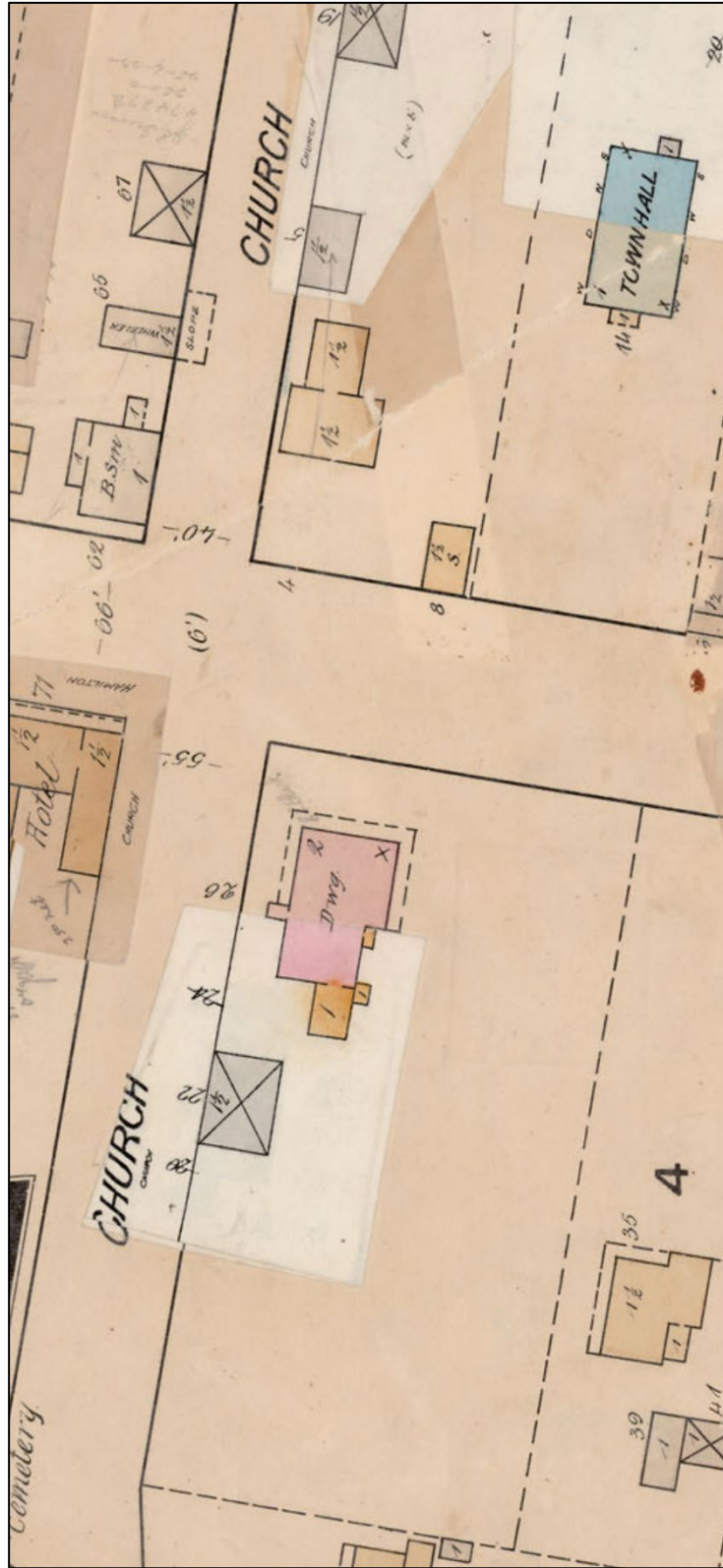


Image 29: Ancaster Fire Insurance Map 1886, revised 1897. North is to the left. (Library and Archives Canada. Retrieved September 6, 2023. <http://central.bac-lac.gc.ca/.redirect?app=fonandcol&id=3810246&lang=eng>)



Image 30: Wilson Street looking southbound, late-nineteenth century. Subject property in center. (Hamilton Public Library, Local History and Archives).

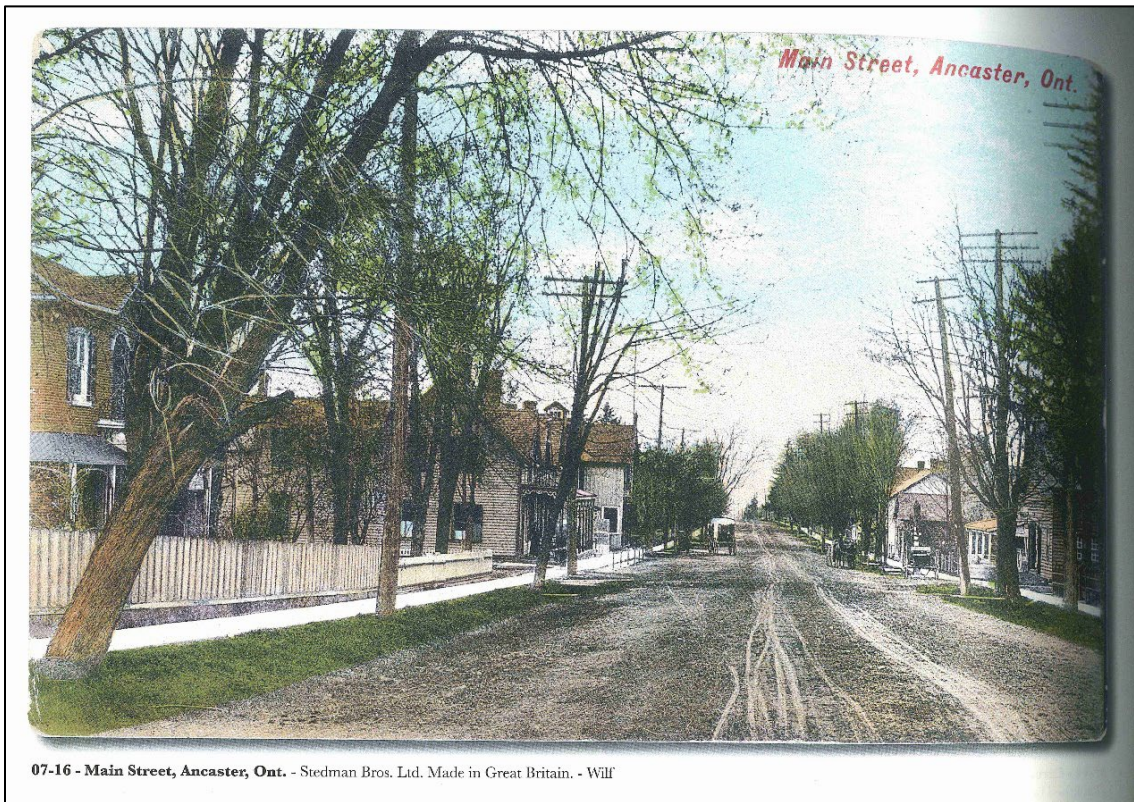


Image 31: Wilson Street looping northbound, late-nineteenth century. Subject property on left side (Hamilton and Wentworth County postcards).