

Photographs

All images taken by City of Hamilton staff in July 2019 unless otherwise noted.



Figure 1: Front (south) elevation showing the central three-bay circa 1846 stone Neoclassical dwelling (middle), eastern stone addition (right) and one-storey western sunroom addition (left).



Figure 2: View of south (front) elevation of the building, showing the original circa 1846 Neoclassical residential building to the left, side additions with covered drive and detached accessory building.



Figure 3: View of southeastern corner of property.



Figure 4: View of northeastern corner of property.



Figure 5: View of northern (rear) elevation.



Figure 6: View of northern (rear) elevation looking southwest.



Figure 7: View of southwestern elevation showing side additions.



Figure 8: View of western (side) elevation.



Figure 9: Detail view of eaves showing cornice.



Figure 10: Detail view of the first storey of the circa 1860 eastern side addition.



Figure 11: Detail view of window on south elevation showing wooden storms and shutters and stone sill.



Figure 12: Detail view of Venetian window in the second storey of the south (front) elevation.



Figure 13: Detail view of Venetian window on south (front) elevation.



Figures 14 and 15: Detail view of the front entrance on south elevation, including sidelights and decorative wood detailing (left); Detail view of door surround on south elevation entrance (right).



Figure 16: Interior view of property, showing central quarter-sawn American white oak staircase.



Figure 17: View of detached accessory structure.



Figure 18: View looking south across grounds from main entrance of circa 1846 stone Neoclassical dwelling.

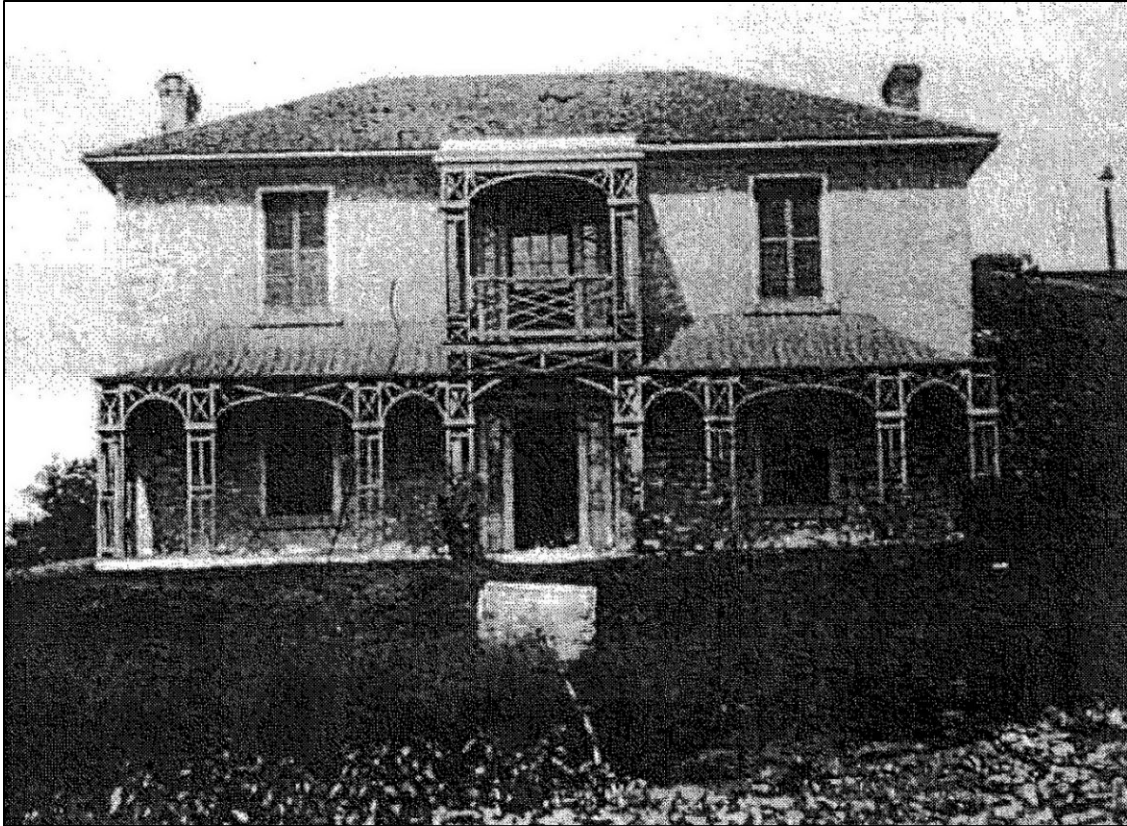


Figure 19: Cummer House, circa 1860-1870. (Flamborough Archive)



Figure 20: Waterdown Flouring Mills before destruction by fire in 1910. (Flamborough Archives).

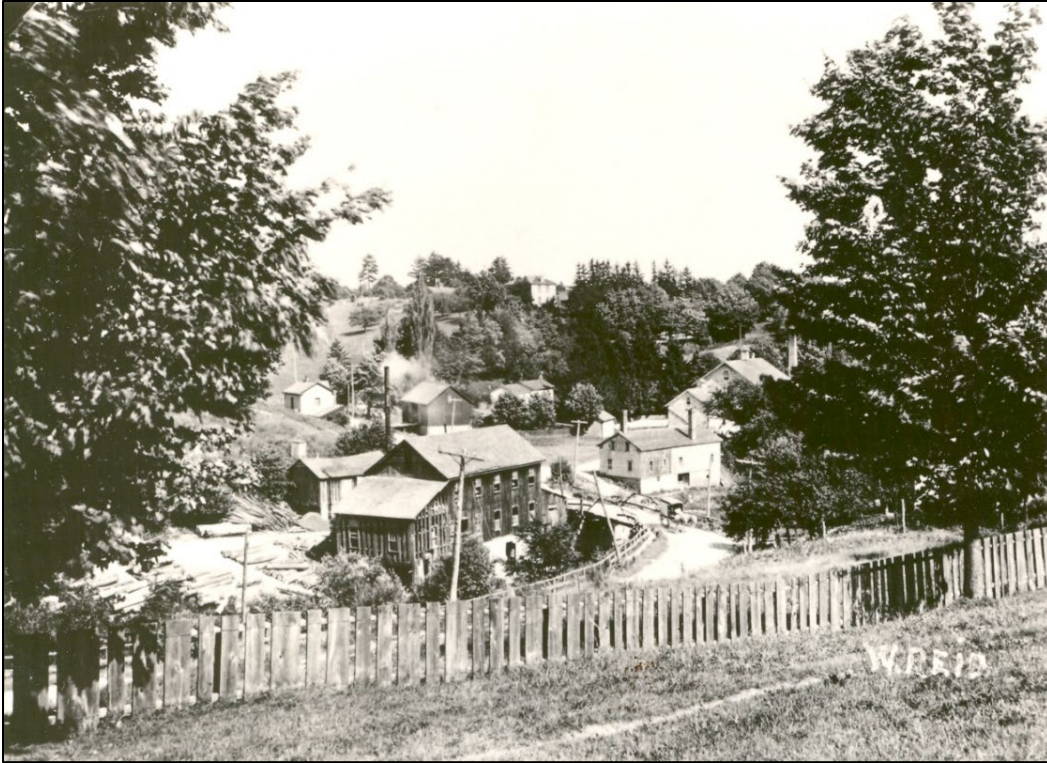


Figure 21: View of Smokey Hollow in the late-nineteenth century, showing subject property in centre background. (Flamborough Archives)



Figure 22: View of Smokey Hollow in the late nineteenth century, showing subject property in upper lefthand corner. (Flamborough Archives)

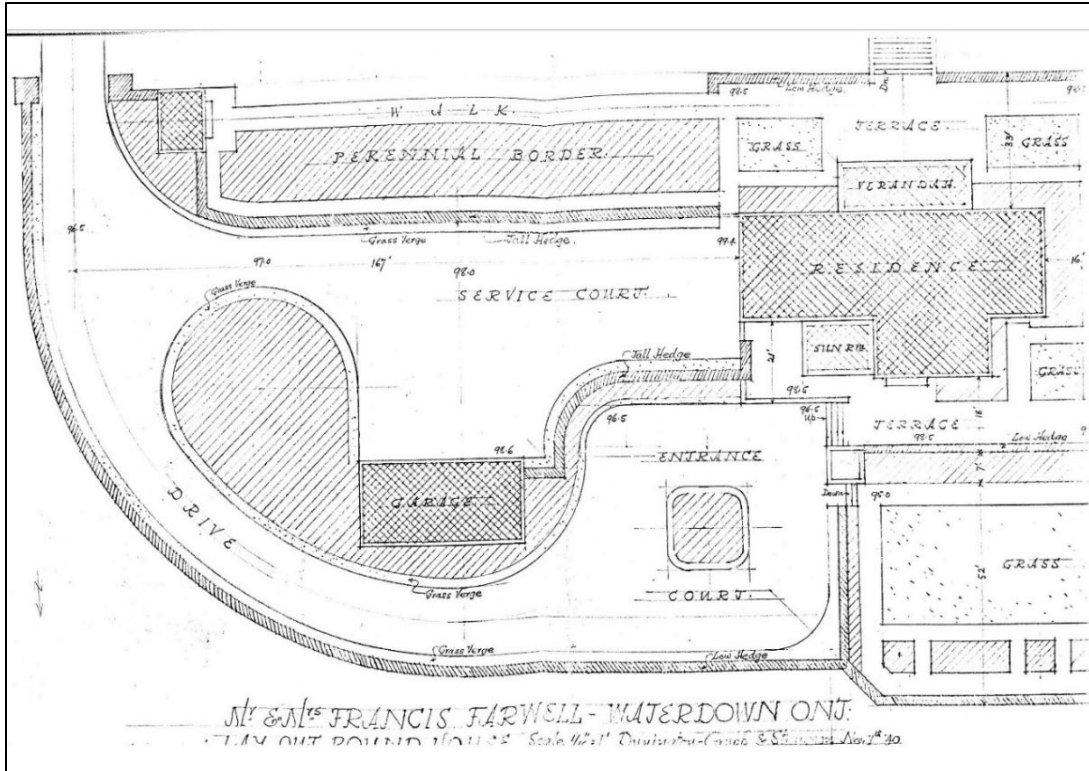


Figure 23: Plan of Dunington-Grubb landscape project for subject property, 1940 (Dunington-Grubb and Stensson Collection, University of Guelph).

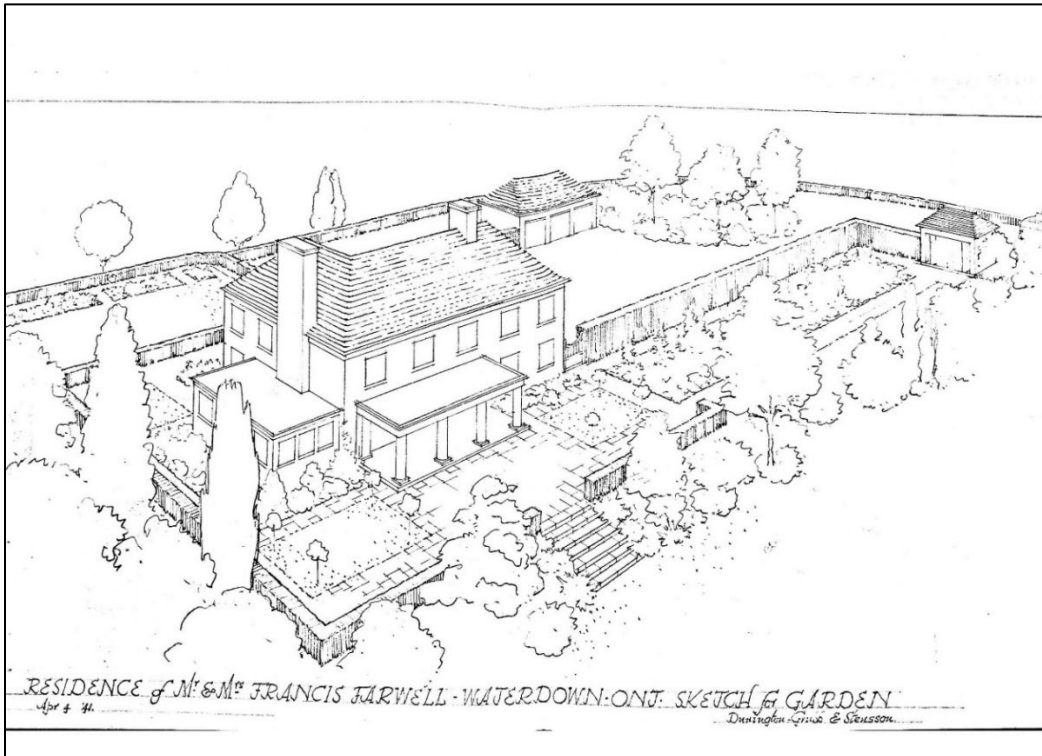


Figure 24: View of Dunington-Grubb landscape, 1941 (Dunington-Grubb and Stensson Collection, University of Guelph).