

Photographs

All images taken by City of Hamilton Staff on June 3, 2023, unless otherwise stated.



Image 1: Eastern elevation of the Eastcourt Carriage House looking west.



Image 2: Close-up of the eastern elevation, showing the openings and brick in greater detail.



Image 3: Close-up of the eastern elevation door.



Image 4: Southern elevation looking north from the public alley. Note the varying brick colours.



Image 5: Close-up of the southern elevation's central second-storey window opening with gable roof.



Image 6: Western elevation, take note of the truncated door and window openings on the left-hand side of the image.



Image 7: Close-up of a window opening on the western elevation. Note the different colour bricks and missing cast-iron elements, indicating that the opening was repaired in the past.



Image 8: Close-up of the cast-iron ornaments over keystones.
Image by Graham Carrol and Ann Gillespie, 2019.



Image 9: Close-up of the cast-iron ornaments at the extremities of opening arch details.
Image by Graham Carrol and Ann Gillespie, 2019.



Image 10: Close-up of the truncated original openings on the western elevation.
Image by Graham Carrol and Ann Gillespie, 2019.



Image 11: Image of the western elevation.
Image by Graham Carrol and Ann Gillespie, 2019.



Image 12: Image of the eastern and northern elevations.
Image by Graham Carrol and Ann Gillespie, 2019



Image 13: Image of the eastern elevation.
Image by Graham Carrol and Ann Gillespie, 2019.



Image 14: Image of the second storey window opening on the southern elevation. Note the rust on the cast iron ornaments.
Image by Graham Carrol and Ann Gillespie, 2019.



Image 15: Historic image of the original Eastcourt Estate residence. Note the cast iron ornaments around the first storey window openings which match those of the surviving Carriage House.

Image by C.S. Cochran; published by William H. Carre, Art Work on Hamilton, Canada, 1899.

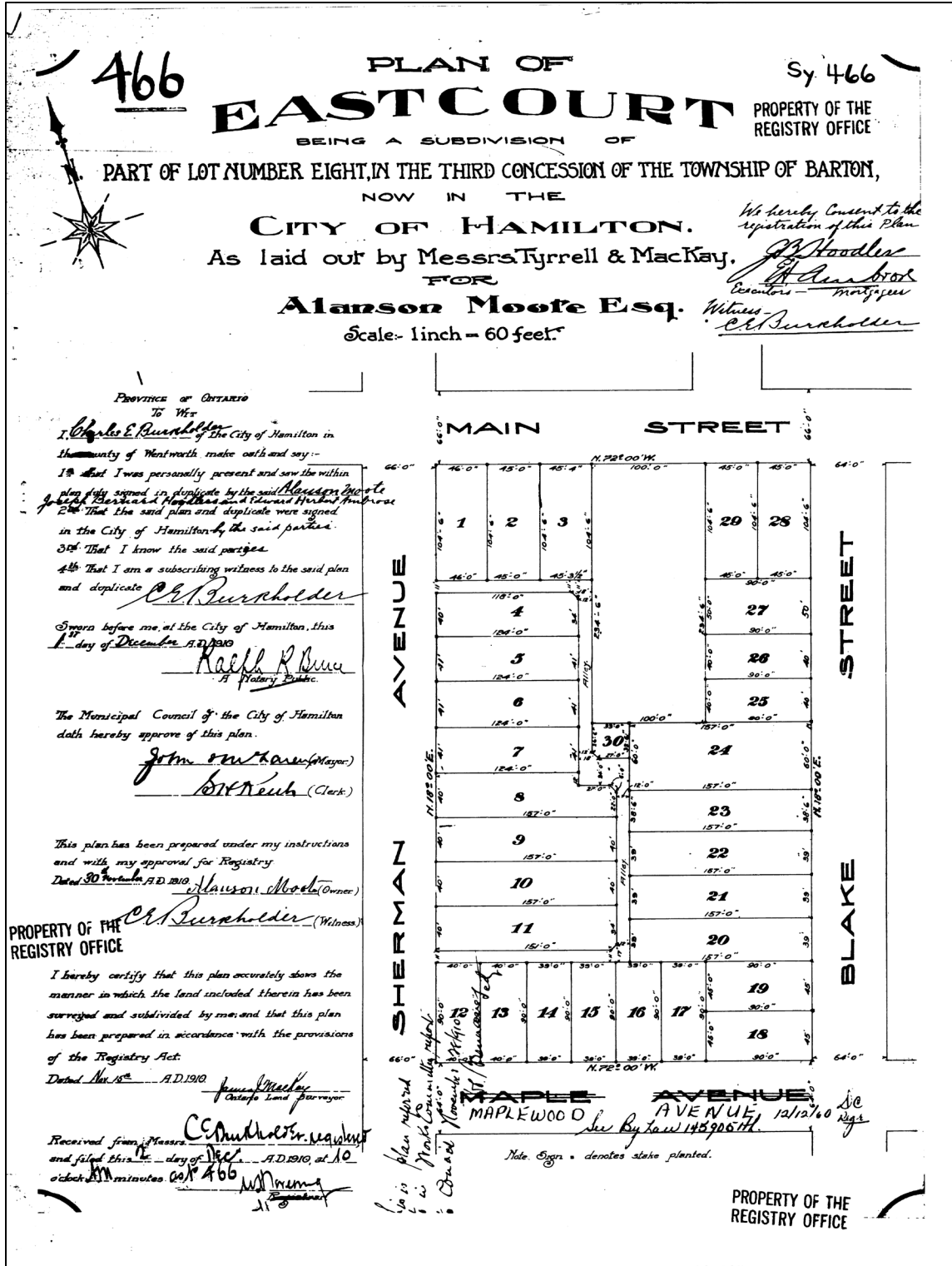


Image 16: Registered Plan 446, produced in 1910, showing the Eastcourt Carriage House on a severed lot (Lot 30), and the public laneway circumventing the lot. Image by Tyrrell & MacKay, 1910, sourced from City of Hamilton Registry Office.