

BOH24023

HSC24044



Hamilton

Collective Impact:

Healthy and Safe Communities and the Greater Hamilton Health Network – 2024 Update

Public Health Committee

September 30, 2024

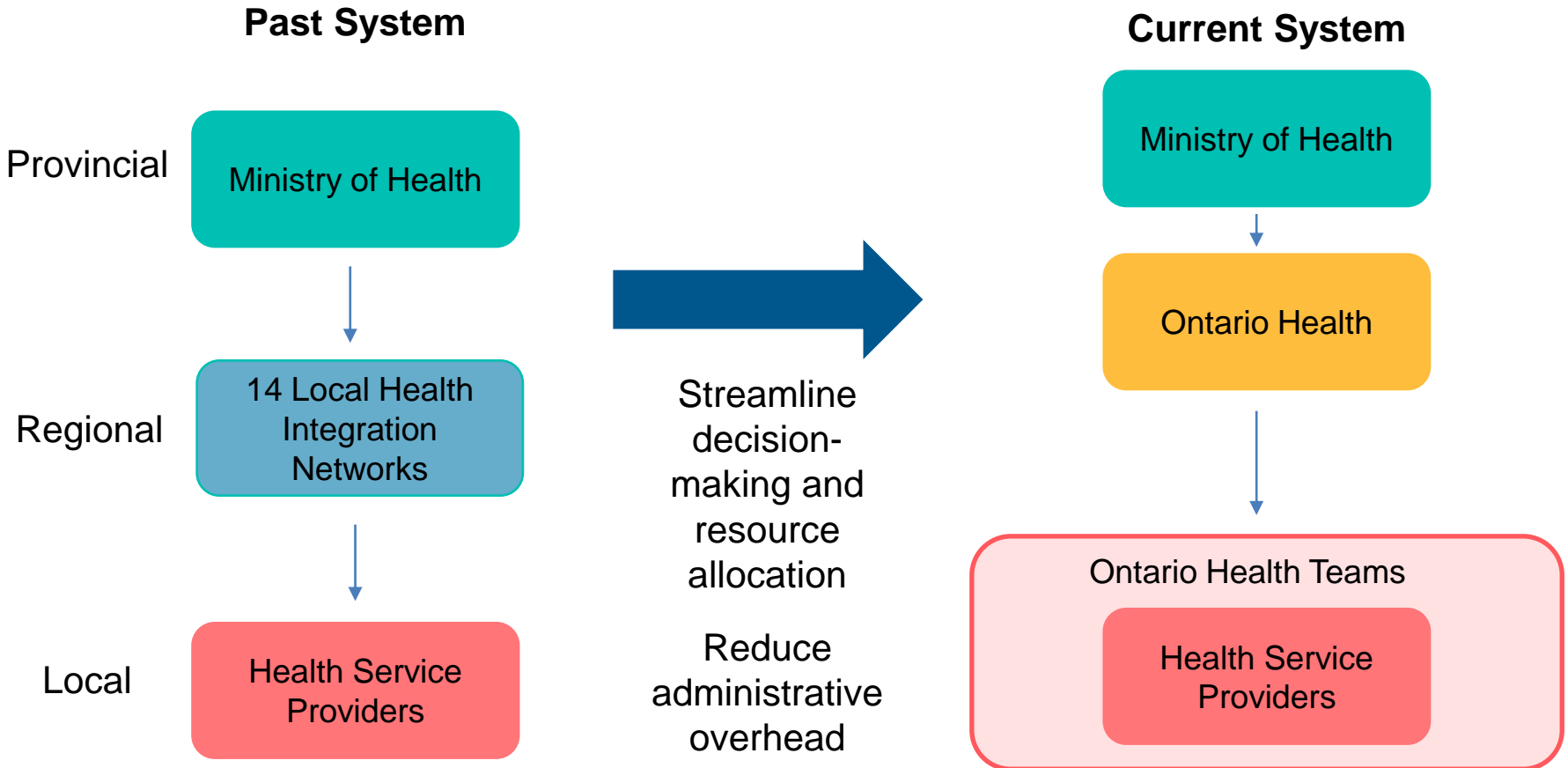
Agenda

- Health System Transformation
- Evolution of the Greater Hamilton Health Network
- Partnerships with the Greater Hamilton Health Network
- Collective Impact



Health System Transformation

In recent years, the Ontario health system has undergone significant changes to improve patient and provider experience and find efficiencies.



Health System Transformation

Ontario Health Teams were established to implement **Ontario Health's priorities and directives** at a **local level**.

Ontario Health Teams are responsible for **bringing together health and social services providers**, regardless of their scope or setting, to collectively advance initiatives and enhance the **coordination** and **integration** of services on a local level.

Greater Hamilton Health Network is the Ontario Health Team responsible for achieving this goal for **Hamilton, Haldimand, and Niagara Northwest**.



Health System Transformation

Ontario Health Teams continue to evolve and mature. At full maturity, they will be responsible for:

Improving access
in a patient-
centered way

Ensuring a full and
coordinated
continuum of care

Responding to the
needs of patients
and communities

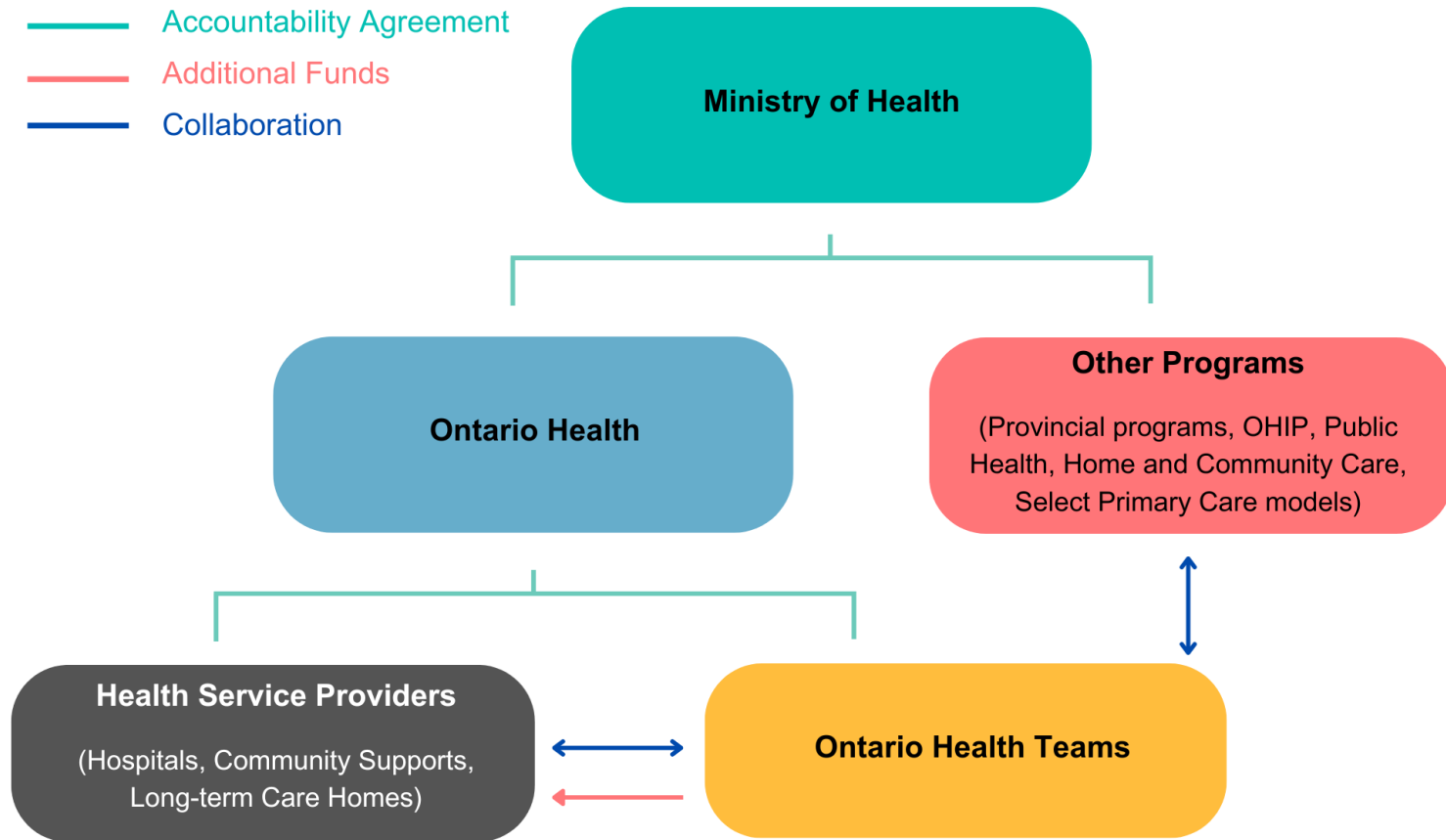
Partnering with
patients and
communities

Leveraging digital
health solutions

Measuring and
reporting on
performance

Allocating
resources based on
community need

Health System Transformation



This image has been developed by Hamilton Public Health Services and Greater Hamilton Health Network. An official image has not been released by the Ministry of Health or Ontario Health, likely due to its evolving nature.

Evolution of the Greater Hamilton Health Team

The GHHN was selected as one of twelve Ontario Health Teams to implement an **accelerated work plan** to move towards **designation at a rapid rate**.

To support this accelerated workplan, Ontario Health set the following priorities:

- Implementation of **integrated care pathways** to support people with multiple or complex chronic conditions;
- Establishment of **primary care networks**; and
- Implementation and uptake of local **digital tools** that support virtual care.



Evolution of the Greater Hamilton Health Team

Staff:

- 8 Full-Time Staff
- 2 Part-Time Staff

Base Funding:

- \$750,000

Additional Funding:

(Implementation of accelerated work plan)

- To be determined

Successful Funding Applications:

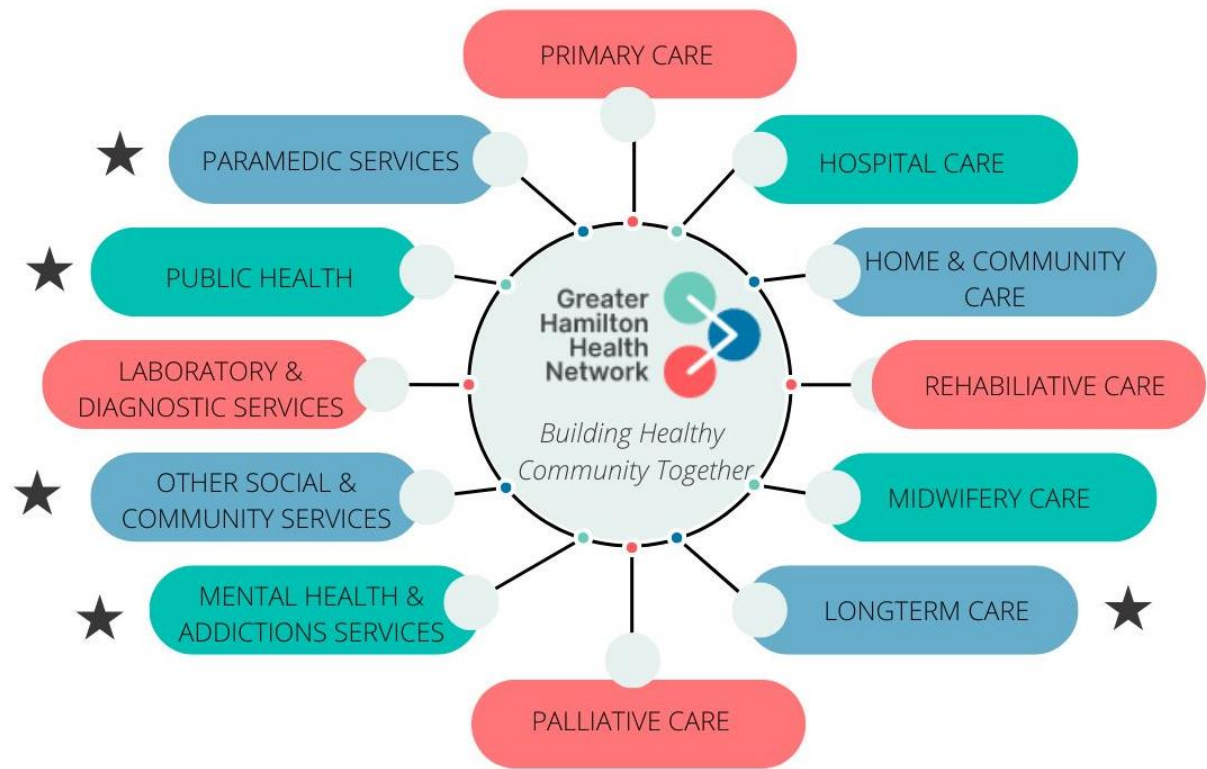
- \$5,000,000+



Partnerships within the Greater Hamilton Health Team

The Greater Hamilton Health Network remains committed to **developing and strengthening local partnerships.**

With over **50 partners**, each organization brings its **unique expertise and scope**, enhancing the network's collective strength.



★ Alignment with departments within Healthy and Safe Communities

Partnerships within the Greater Hamilton Health Team



Addressing the structural and system factors that determine health

Addressing the risk factors that can lead to health issues

Addressing or treating immediate health issues

Upstream

Community Impact

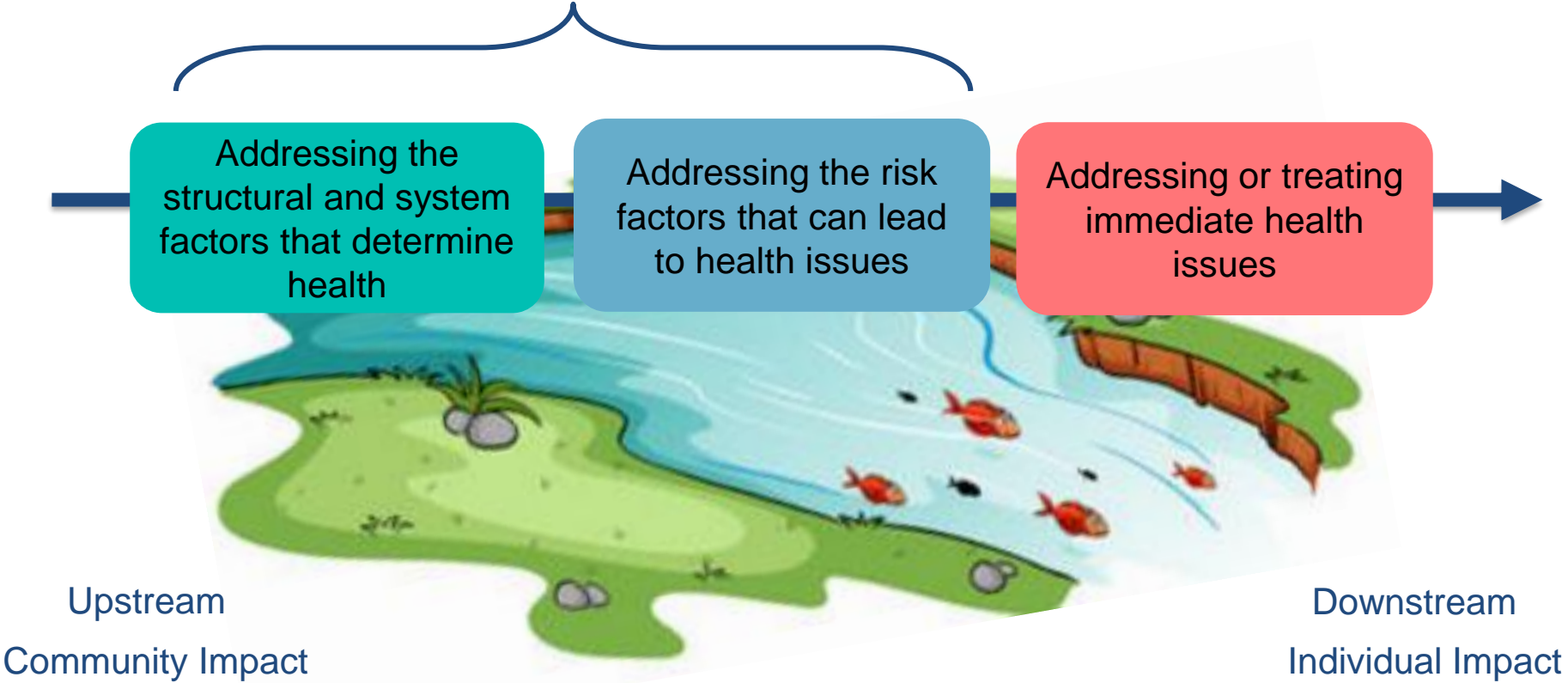
Downstream

Individual Impact

Full Continuum of Care

Partnerships within the Greater Hamilton Health Team

Healthy and Safe Communities primarily focuses on upstream efforts to promote health and prevent disease



Partnerships within the Greater Hamilton Health Team

Since the development of the Greater Hamilton Health Network in 2019, many **strong connections** have been established with departments across the **Healthy and Safe Community** division.

This partnership continues to **evolve** as the roles and responsibilities of the Greater Hamilton Health Network evolve.

Health and Safe Communities has **three clear roles** within the Greater Hamilton Health Network:

Involvement in the
Greater Hamilton Health
Network's Governance

Participation in the
Greater Hamilton Health
Network's Councils and
Working Groups

Annual Updates to Public
Health Committee

Collective Impact of the Greater Hamilton Health Network

Health Equity as a Foundation

High Need Community Initiative

Primary Care Network

Healthcare at Eva Rothwell

Collective Impact of the Greater Hamilton Health Network

Health Equity as a Foundation

- The Greater Health Hamilton Network has embedded **health equity principles** into all aspects of its work.
- After 2 years of community engagement, the Greater Health Hamilton Network developed its **Health Equity Framework** with **136 recommendations**.
- In 2024, the Greater Health Hamilton Network has focused on:
 - Applying for **additional funding** for projects focused on supporting people who are **trans, gender diverse, Black, or who use drugs**.
 - Enhancing **language accessibility** within clinical services.
 - Creating a **positive space assessment toolkit** to support partners create supportive and inclusive environments for 2SLGBTQ+ communities.
 - Advancing initiatives to **collect health equity data** across partners.

Collective Impact of the Greater Hamilton Health Network

High Need Community Initiative

- In July 2023, the Greater Health Hamilton Network secured a **\$1.4 million investment** to enhance services for Hamilton's most vulnerable populations.
- The Greater Health Hamilton Network partners **collectively identified priority populations** and their **most pressing needs**.
- This led to the funds being used to support a variety of initiatives tailored for **refugees, newcomers, individuals experiencing homelessness or precarious housing, and those with mental health and addiction issues**.
- Healthy and Safe Communities supported initiatives to cover the costs of **urgent dental care for children from low-income families** and ensure **24/7 access to free harm reduction, hygiene, and health supplies** through HealthBoxes.

Collective Impact of the Greater Hamilton Health Network

Primary Care Network

- The Greater Hamilton Health Network has established a strong **Primary Care Network** to **connect, integrate**, and develop a **shared voice** for primary care providers locally.
- The Primary Care Network secured a **\$2.2 million investment** to expand and enhance access to **team-based care** locally. These funds will be used to connect unattached clients, with a focus on **equity-deserving populations**.
- This is the first instance of **cross-sector collaboration locally**, where resources were jointly planned and allocated across various primary care organizations.
- Healthy and Safe Communities has been involved in planning for the **allocation of funds** and will be collaborating on **large-scale clinics and events** in collaboration with other Greater Hamilton Health Network members to expand access to necessary services.

Collective Impact of the Greater Hamilton Health Network

Healthcare at Eva Rothwell

- The Primary Care Network is developing **Primary Care Hubs** in traditionally **underserved neighborhoods** with demonstrated **health disparities**.
- These hubs will offer a variety of **interdisciplinary services** based on the **needs of the community**.
- The first hub was established at **Eva Rothwell Center** focusing on **youth** from wards 2 and 3 who are not connected to primary care and their families.
- Public Health Services is exploring opportunities for **co-location** with the Hamilton Family Health Team at **this site** to respond to the identified needs and **improve access to important public health services**.

The Path Forward for the Greater Hamilton Health Network

As the Greater Hamilton Health Network continues to **evolve** and strengthen its role, these **opportunities for collective impact** will continue to grow.

The **collaborative** model is well-suited to address the **complex health issues and inequalities** in our community.

By engaging diverse partners and the communities disproportionately impacted by these issues, and applying innovative problem-solving, Ontario Health teams can implement an “**All of Society Approach**” to tackle these issues more effectively.



References

- Government of Ontario. (November 2019). Ontario Taking Next Steps to Integrate Health Care System: Changes will Protect Uninterrupted Access to Patient Care <https://news.ontario.ca/en/release/54585/ontario-taking-next-steps-to-integrate-health-care-system>
- Greater Hamilton Health Network. (June 2021). Health Equity Framework: An anti-oppression, anti-racism, sex/gender based, intersectional approach. https://greaterhamiltonhealthnetwork.ca/wp-content/uploads/2023/03/GHHN-Health-Equity-Report-FINAL_Jan-2023-copy.pdf
- Ministry of Health. (2023). Accelerating Ontario Health Teams to deliver better care <https://www.ontario.ca/document/connected-care-updates/connected-care-update-november-28-2023>
- Ministry of Health. (2019). Ontario Health Teams <https://www.ontario.ca/page/ontario-health-teams>
- Ministry of Health (January 2024). Primary Care Network in Ontario Health Teams: Guidance Document. <https://www.ontario.ca/files/2024-01/moh-primary-care-networks-guidance-en-2024-01-23.pdf>