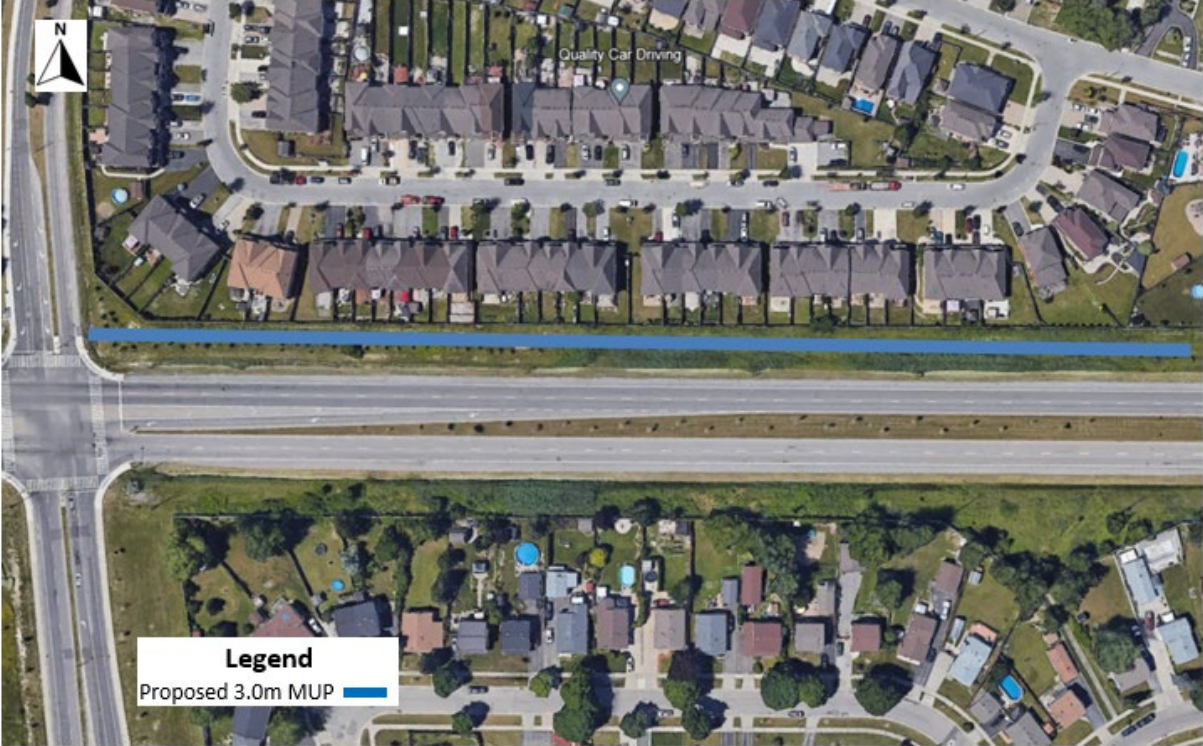


Option 2 – Mud Street North Side Multi-Use Path

Mud Street – Winterberry Drive to a point 330m east thereof (north side analysis)



Mud Street – A point 330m east of Winterberry Drive to a point east 275m thereof (north side analysis)



Mud Street – A point 605m east of Winterberry Drive to Paramount Dr (north side analysis)

