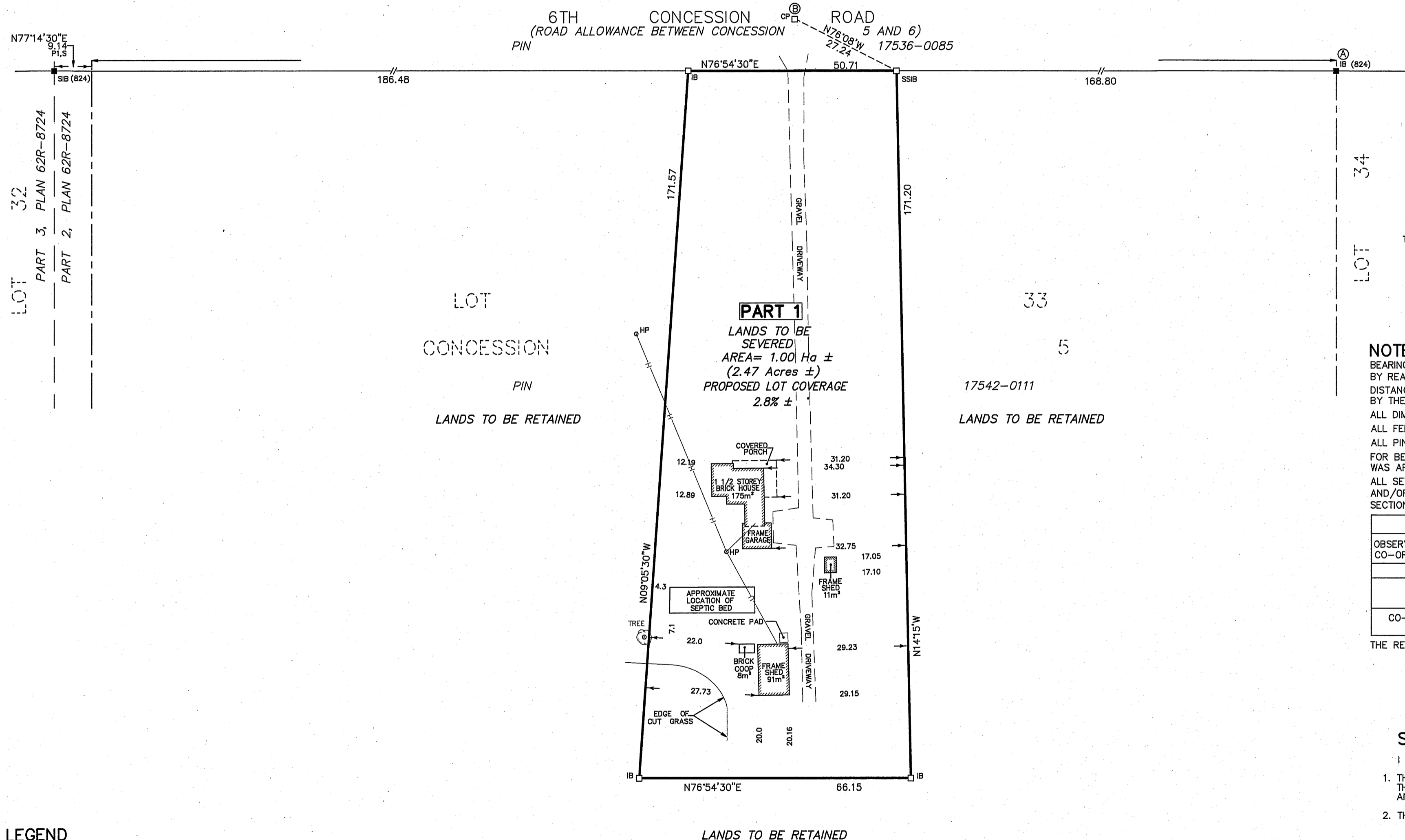


METRIC
DISTANCES AND CO-ORDINATES SHOWN ON
THIS PLAN ARE IN METRES AND CAN BE
CONVERTED TO FEET BY DIVIDING BY 0.3048.

SCHEDULE				
PART	LOT	CONCESSION	PIN	AREA IN HECTARES
1	PART OF 33	5	17542-0111	1.00

PART 1 COMPRISES PART OF PIN 17542-0111.



**PLAN OF SURVEY OF
PART OF LOT 33
CONCESSION 5**
(GEOGRAPHIC TOWNSHIP OF BEVERLY)
NOW IN THE TOWN OF FLAMBOROUGH
CITY OF HAMILTON
SCALE 1:750



THE INTENDED PLOT SIZE OF THIS PLAN IS 609mm IN WIDTH BY 457mm IN HEIGHT WHEN PLOTTED AT A SCALE OF 1:750

MacAULAY, WHITE & MUIR LTD.

NOTE:

BEARINGS ARE UTM GRID, DERIVED FROM OBSERVED REFERENCE POINTS A AND B BY REAL TIME NETWORK OBSERVATION, UTM ZONE 17, NAD83 (CSRS) (2010). DISTANCES ARE GROUND AND CAN BE CONVERTED TO GRID BY MULTIPLYING BY THE COMBINED SCALE FACTOR OF 0.9996354. ALL DIMENSIONS ARE MEASURED UNLESS QUALIFIED. ALL FENCES ARE "ON LINE" UNLESS TIES TO THE PROPERTY LINE ARE SHOWN. ALL PINS ARE (LT) UNLESS NOTED (R). FOR BEARING COMPARISONS, A ROTATION OF 00°02'50" COUNTER-CLOCKWISE WAS APPLIED TO BEARINGS ON PLAN 62R-14943. ALL SET SSIB AND PB MONUMENTS WERE USED DUE TO LACK OF OVERBURDEN AND/OR PROXIMITY OF UNDERGROUND UTILITIES IN ACCORDANCE WITH SECTION 11 (4) OF O.REG. 525/91.

INTEGRATION DATA

OBSERVED REFERENCE POINTS (ORP): UTM ZONE 17, NAD83 (CSRS) (2010)
CO-ORDINATES TO URBAN ACCURACY PER SEC. 14(2) OF O. REG 216/10.

POINT ID	NORTHING	EASTING
A	4798519.81	575426.18
B	4798356.45	575270.44

CO-ORDINATES CANNOT, IN THEMSELVES, BE USED TO RE-ESTABLISH CORNERS OR BOUNDARIES SHOWN ON THIS PLAN.

THE RESULTANT TIE BETWEEN ORP A AND ORP B IS N78°35'26"E 193.44.

SURVEYOR'S CERTIFICATE

I CERTIFY THAT:

- THIS SURVEY AND PLAN ARE CORRECT AND IN ACCORDANCE WITH THE SURVEYS ACT, THE SURVEYORS ACT AND THE LAND TITLES ACT AND THE REGULATIONS MADE UNDER THEM.
- THE SURVEY WAS COMPLETED ON THE 7TH DAY OF MARCH, 2024.

JUNE 6, 2024

JOHN W. MUIR
ONTARIO LAND SURVEYOR

LEGEND

- SIB - STANDARD IRON BAR
- SSIB - SHORT STANDARD IRON BAR
- IB - IRON BAR
- CC - CUT CROSS
- PB - PLASTIC BAR
- CP - CONCRETE PIN
- - PLANTED
- - FOUND
- - ROUND
- WT - WITNESS
- S - SET
- 824 - A.T. MCLAREN, O.L.S.
- P1 - PLAN 62R-9259

THIS PLAN OF SURVEY RELATES TO AOLS PLAN SUBMISSION FORM NUMBER V-

<p>MacAulay, White & Muir Ltd. ONTARIO LAND SURVEYORS - CANADA LANDS SURVEYORS A Wholly Owned Subsidiary of J.D. Barnes Limited 440 HARDY ROAD, UNIT 2, BRANTFORD, ON N3T 5L8 T: (519) 752-0040 www.jdbarnes.com</p>	DRAWN:	LD
	CHECKED:	JW
	Ref. No.	24-50-051-00



+/-405m

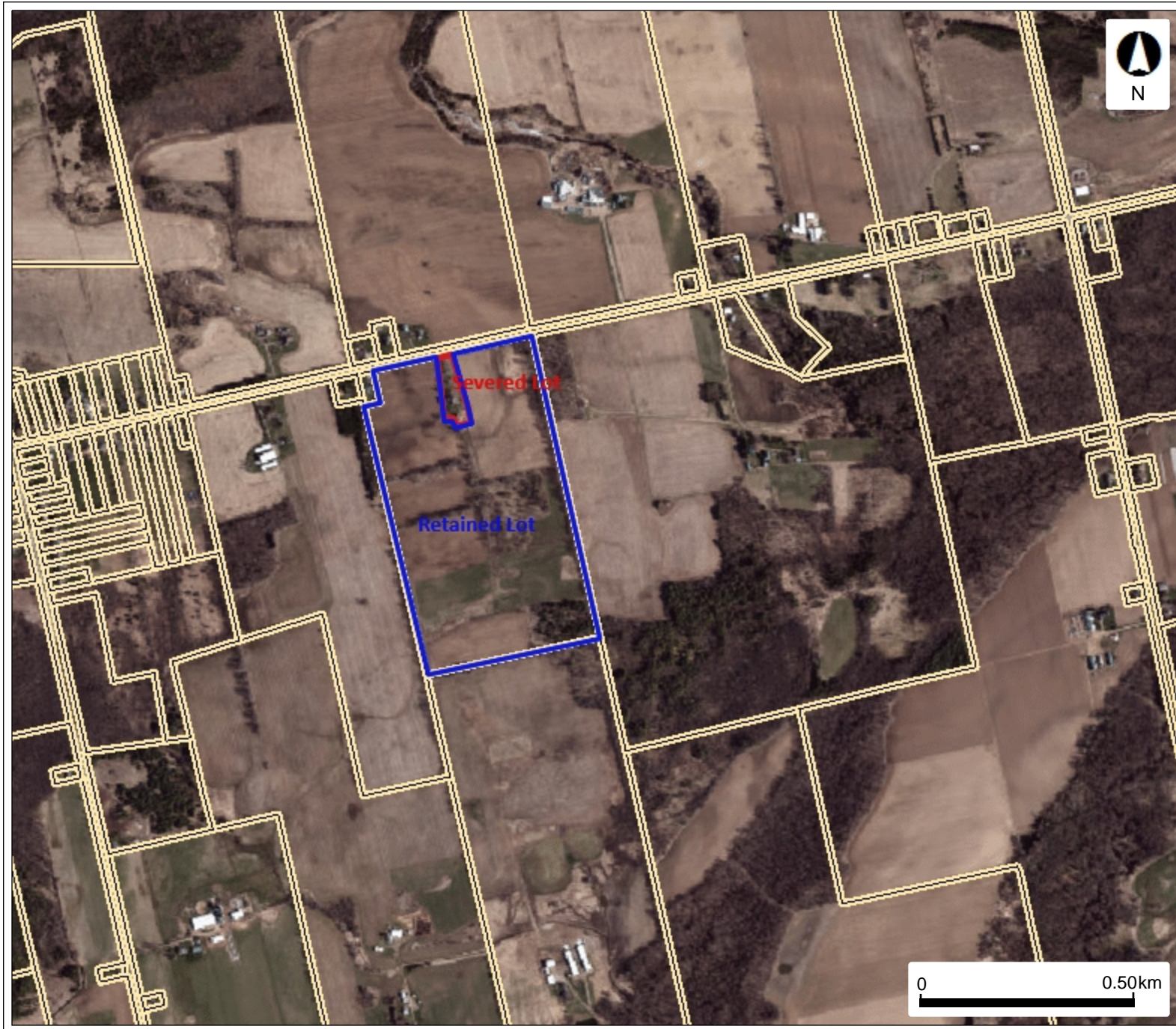
+/-76m

+/-37m

+/-639m

+/-721m

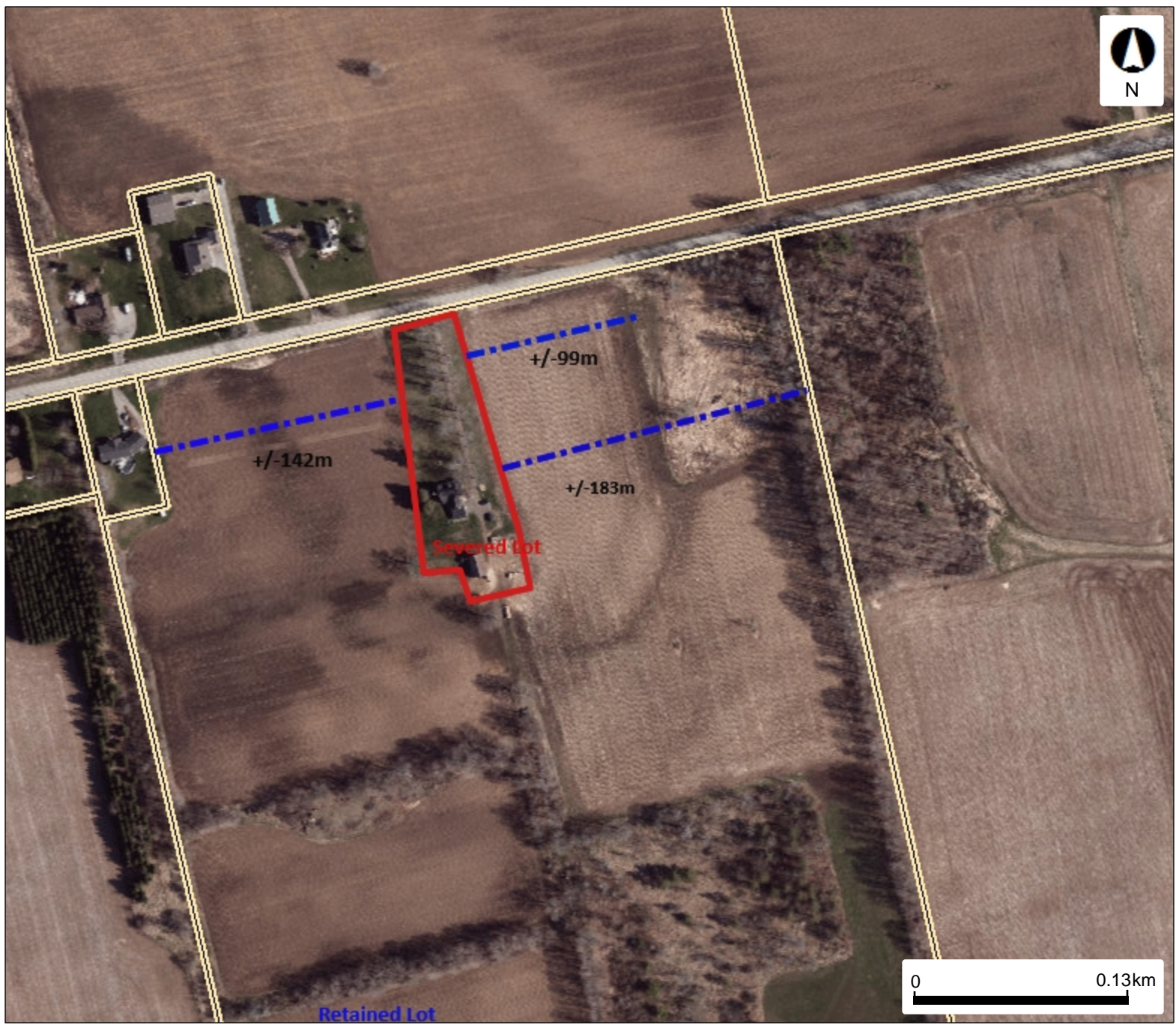
+/-413m



Legend
Assessment Parcel

This map should not be relied on as a precise indicator of routes or locations, nor as a guide to navigation. The Ontario Ministry of Agriculture, Food and Rural Affairs (OMAFRA) shall not be liable in any way for the use or any information on this map. of, or reliance upon, this map.

Approximate Distances



Legend
Assessment Parcel

This map should not be relied on as a precise indicator of routes or locations, nor as a guide to navigation. The Ontario Ministry of Agriculture, Food and Rural Affairs (OMAFRA) shall not be liable in any way for the use or any information on this map. of, or reliance upon, this map.