

Photographs

All images taken by City of Hamilton staff on February 9, 2024 unless otherwise noted.



Figure 1: South elevation of subject property.



Figure 2: South and west elevations of subject property.



Figure 3: West elevation showing modern entrance.



Figure 4: South and east elevations.



Figure 5: East elevation.



Figure 6: Detail view of windows and doorway on south elevation.



Figure 7: Detail view of parapet with decorative brickwork.



Figure 8: Detail view of decorative brickwork elements.



Figure 9: Detail view of decorative brickwork elements.



Figure 10: Detail view of windows and buttresses on west elevation.



Figure 11: Detail view of butress capstones and stone corbel on southwest corner.

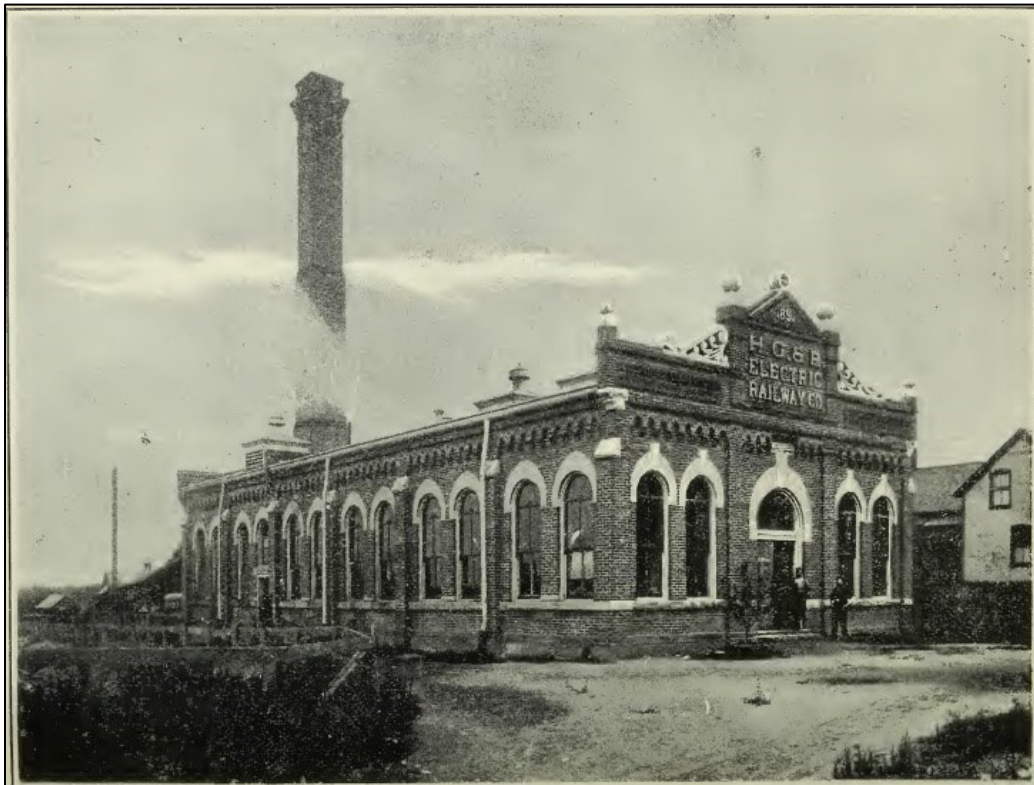


Figure 12: Powerhouse under steam, late nineteenth century (Ride Through the Garden of Canada).

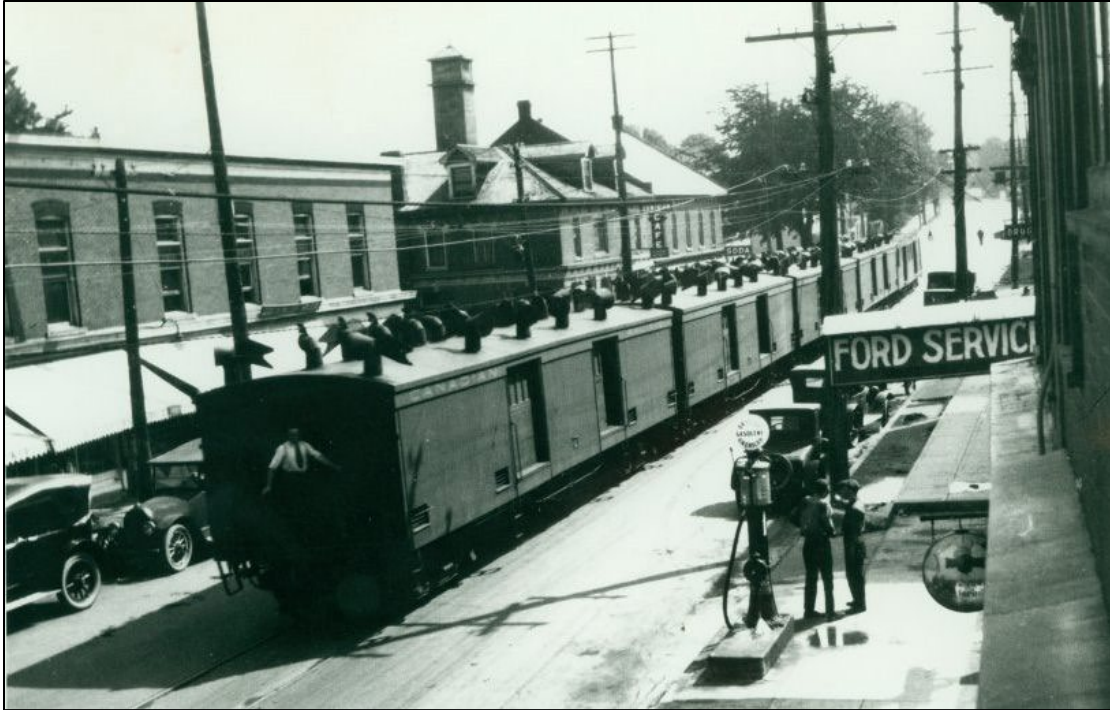


Figure 13: Fruit Train in Grimsby, circa 1922 (Hamilton Transit History).