

Photographs

All photographs taken by City of Hamilton staff on March 13, 2024, unless otherwise noted.



Figure 1: Hamilton Memorial School, front (south) elevation.



Figure 2: South elevation looking northwest.



Figure 3: Rear (north) elevation. City of Hamilton staff, July 9, 2014.



Figure 4: Western side elevation, northern end. City of Hamilton staff, July 9, 2014.



Figure 5: Western side elevation, southern end. City of Hamilton staff, July 9, 2014.



Figure 6: East side elevation, southern end. City of Hamilton staff July 9, 2014.



Figure 7: East side yard looking north, showing 1921 Manual Arts building and modern connecting annex. City of Hamilton staff, July 9, 2014.



Figure 8: Front (east) elevation of 1921 Manual Arts building fronting onto Ottawa Street North.



Figure 9: Detail view of plaque reading "Manual Arts" on parapet of Manual Arts building.



Figure 10: View of modern annex attached to 1921 Manual Arts building.



Figure 11: Detail view of relocated plaque. City of Hamilton staff, July 9, 2014.



Figure 12: Detail view of decorative elements on the south elevation of the 1921 Manual Arts Building. City of Hamilton staff, July 9, 2014.



Figure 13: Detail view of main entrance on south elevation.



Figure 14: Detail view of date stone reading "1914- Memorial School -1918".



Figure 15: Detail view of entryway.



Figure 16: Detail view of historical plaque.



Figure 17: Detail view of entryway on south elevation showing decorative elements. City of Hamilton staff, July 9, 2014.



Figure 18: Detail view of former City of Hamilton crest. City of Hamilton staff, July 9, 2014.



Figure 19: Detail view of entry inscription reading "We gave our today for your tomorrow...". City of Hamilton staff, July 9, 2014.



Figure 20: Detail view of entry inscription reading "... We died that you might live". City of Hamilton staff, July 9, 2014.



Figure 21: Detail view of doorway within main entrance.



Figure 22: Detail view of gated entryway on main entrance.



Figure 23: Decorative brick panels on south elevation. City of Hamilton staff, July 9, 2014.



Figure 24: Detail view of decorative stone elements. City of Hamilton staff, July 9, 2014.



Figure 25: Detail view of decorative stone elements. City of Hamilton staff, July 9, 2014.



Figure 26: Detail view of decorative stone elements. City of Hamilton staff, July 9, 2014.



Figure 27: View of side entrance on west elevation.



Figure 28: Detail view of entryway on west elevation.

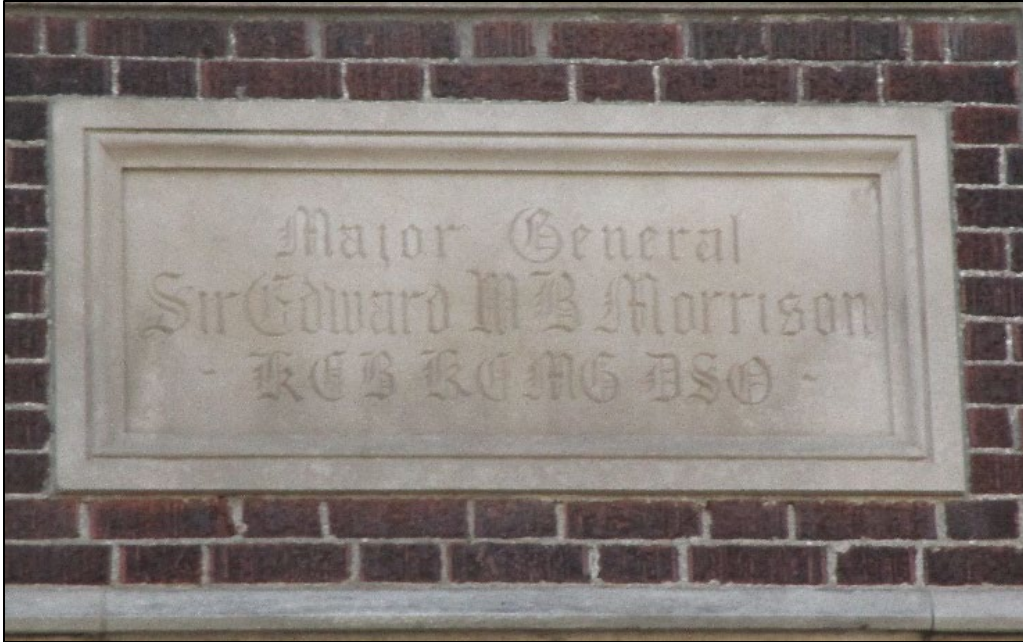


Figure 29: Detail view of commemorative stone plaque over entryway reading "Major General Sir Edward M. B. Morrison KCB KCMG DSO".



Figure 30: Detail view of parapet over side entrance. City of Hamilton staff July 9, 2014.



Figure 31: Relocated memorial stone on modern annex, reading "Lieutenant-Colonel William A. Bishop, VC, DSO MC". City of Hamilton staff July 9, 2014.



Figure 32: Interior Auditorium.



Figure 33: Detail view of Auditorium.



Figure 34: Detail view of crest in auditorium.



Figure 35: Detail view of bronze memorial tablet in auditorium.



Figure 36: View of stage in auditorium, mural banner reading " That our youth may ever remember the valiant men of Hamilton who died in the Great War, this school is a memorial".



Figure 37: Detail view of bracket supporting coffered ceiling.



Figure 38: Contextual shot of subject property. City of Hamilton staff, October 22, 2024.



Figure 39: Hamilton Memorial School circa 1980s (Local Architectural Conservation Advisory Committee, Inventory of Historic pre-1940 Hamilton Board of Education Schools, City of Hamilton)

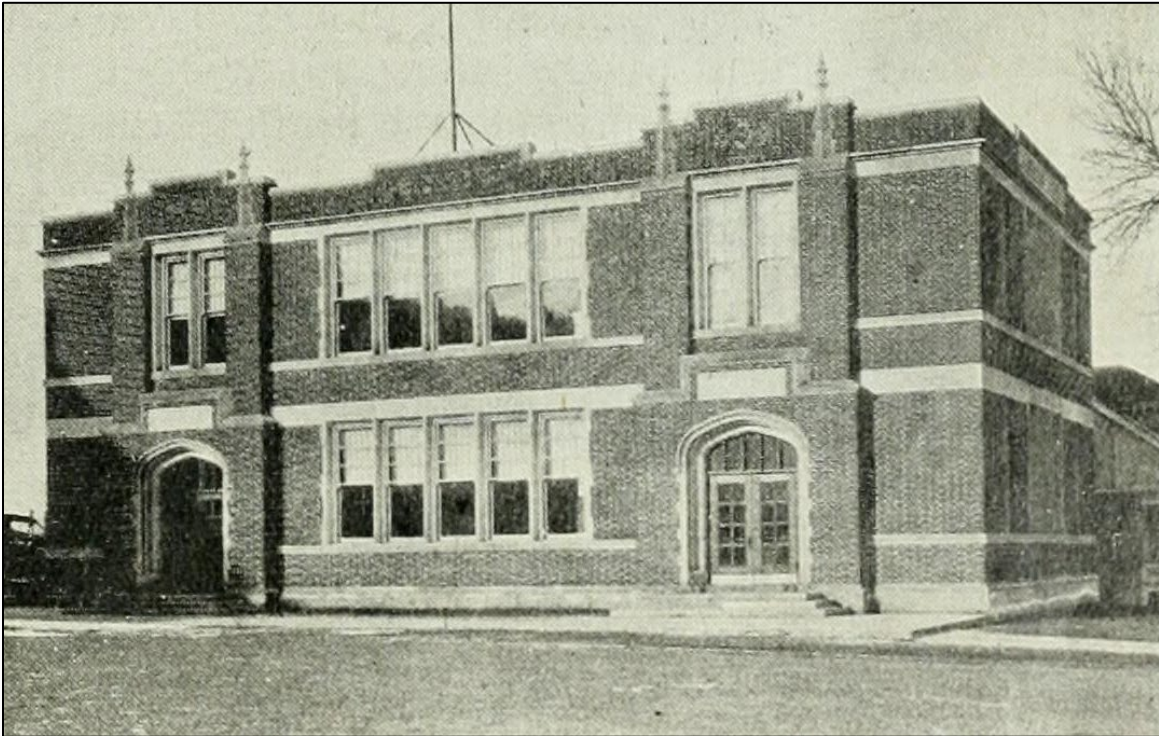


Figure 40: Manual Arts Building, circa 1922 (*The Electrical News*, January 1922)

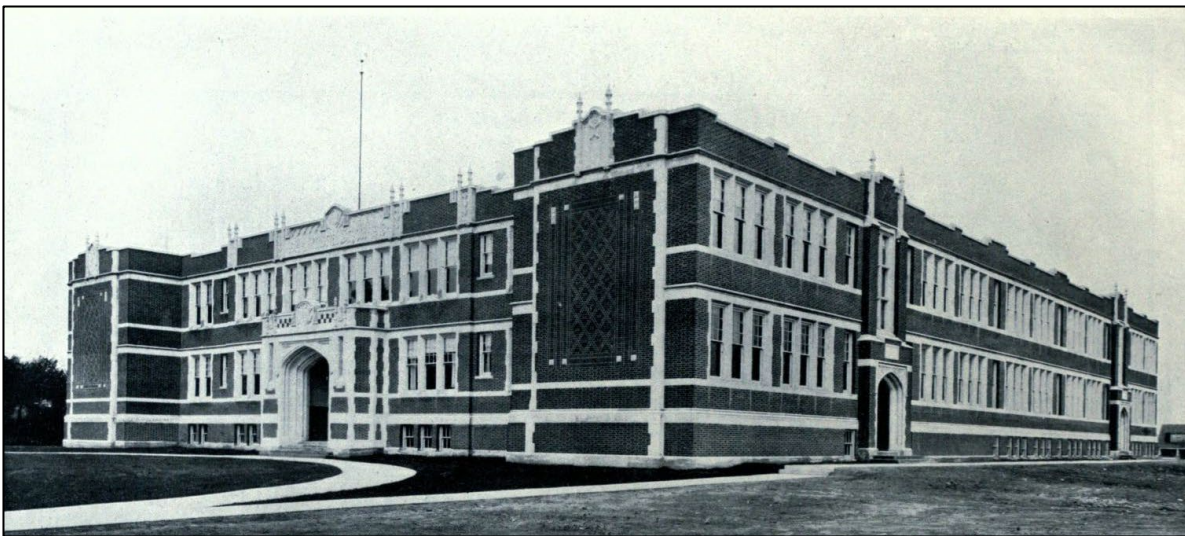


Figure 41: Memorial School newly completed in 1919 (*Construction*, November 1919)



Figure 42: Front Elevation in 1919 (*Construction*, November 1919)

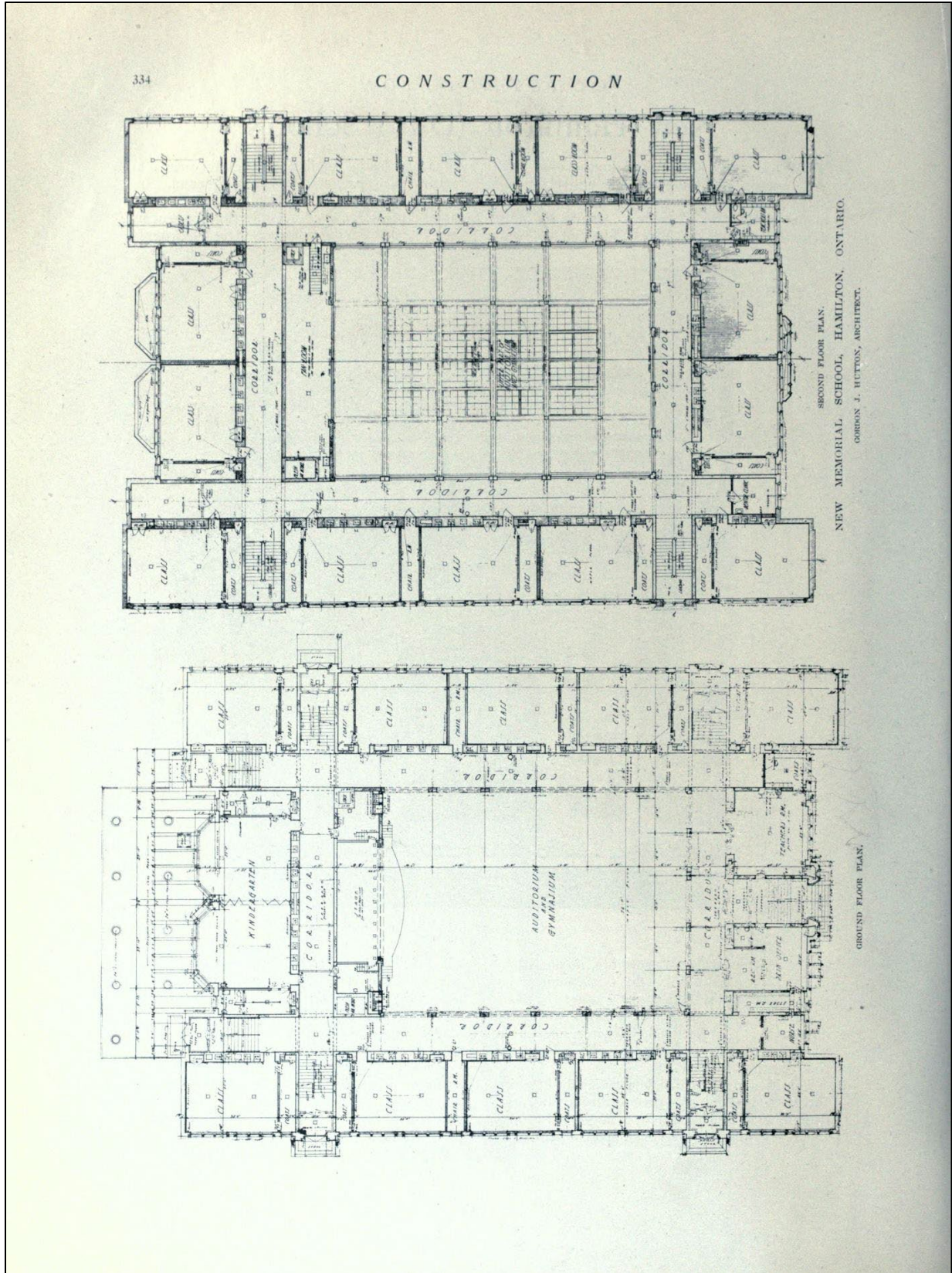


Figure 43: Plans of Memorial School (*Construction*, November 1919)

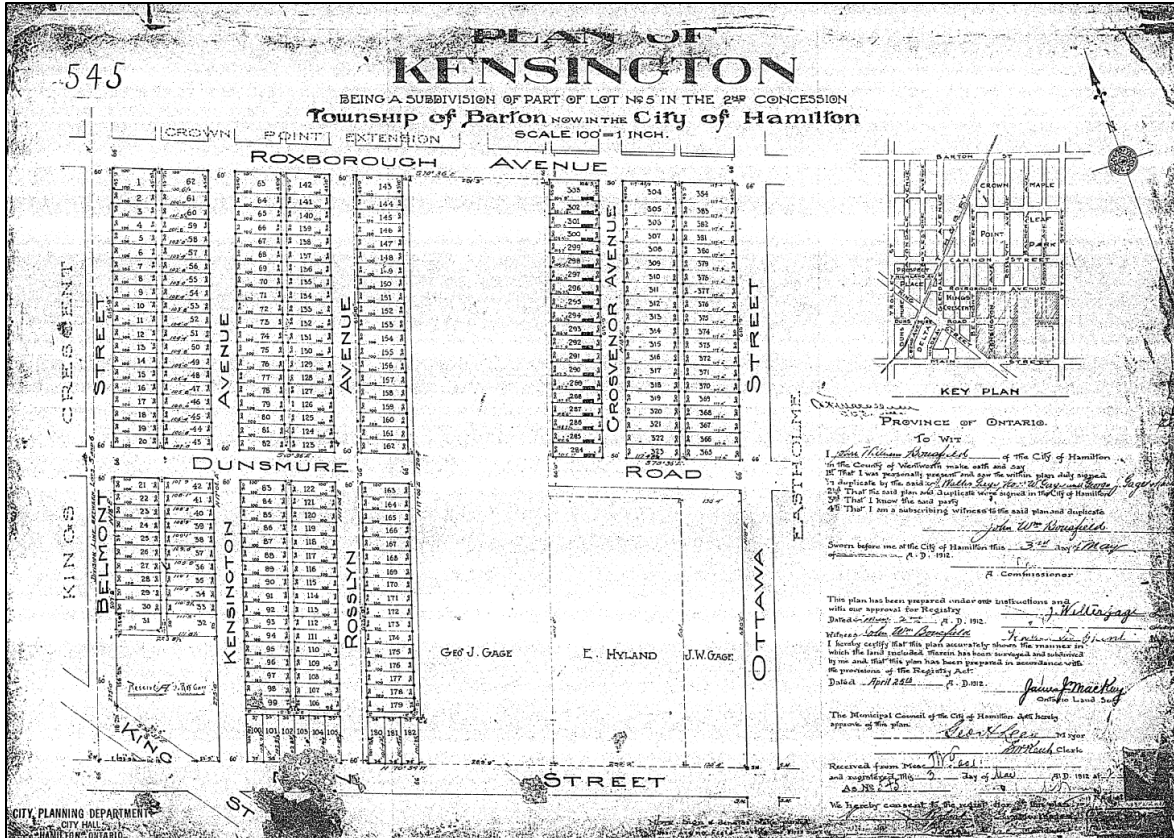


Figure 44: Kensington survey (City of Hamilton RP-0545, 1912)

MILTON SPECTATOR FRIDAY JANUARY 19 1912



KENSINGTON

A 'Very Seldom' Real Estate Opportunity

AND

Where Your Money Is Safe and Works to Advantage

KENSINGTON

NEAR THE DELTA

The continuous industrial growth of Hamilton must make it very plain to **you** that fine homesites in good locations are becoming scarce and the demand will be greater a **few months hence**. We anticipated this condition and "**bought early**" and we are glad to put you "**next**" to our latest Survey--**KENSINGTON**...a really **good Proposition**. The results obtained from investments in Barnesdale, Fairfield, Eastholme and Overdene are still fresh in your memory and now we unhesitatingly recommend Kensington to you for investment. Shrewd financial men commend realty propositions to **young men** for safe investments and the **artisan** can save money by being a land owner. Snow on the Ground need not deter you from purchasing now. We show you the Plan to select from and should you desire will send one of our representatives to show you the lots.

Kensington fronts on King and Main Streets, right at the intersection of the cross roads, known as the Delta.

Surrounding Properties Are Selling At Higher Prices

→ PRICES ←	→ TERMS ←
\$12.00 and up per foot frontage. Discount 5 % for cash within 30 days	\$25.00 down. Balance in monthly payments of \$10 or by mutual arrangement.

No Interest or Taxes Till January 1st., 1913

Avenues will be graded, shade trees planted and cement walks laid **free of cost to purchasers**. The laying of water mains and sewers will be pushed forward. Remember these lots face on 60 feet avenues and are mostly 100 feet deep with alley in rear.

For Further Information See

J. WALTER GAGE

32-36 Main St. East — Hamilton — Telephone 781

Figure 45: Advertisement for Lots, Kensington Survey (The Hamilton Spectator, January 19, 1912)