

## Photographs

All photographs taken by City of Hamilton staff on March 13, 2024, unless otherwise noted.



Figure 1: W.H. Ballard School, central front (south) elevation.





Figure 2: East side of south elevation. City of Hamilton staff, July 9, 2014.



Figure 3: West side of south elevation. City of Hamilton staff, July 9, 2014.





Figure 4: West elevation of subject property. City of Hamilton staff, July 9, 2014.



Figure 5: East elevation of subject property. City of Hamilton staff, July 9, 2014.





Figure 6: Detail view of front entrance.





Figure 7: Detail view of stone decorative element.



Figure 8: Date stone on circular bay.



Figure 9: Province of Ontario coat of arms.



Figure 10: Former City of Hamilton coat of arms.





Figure 11: Detail view of parapet on circular bay. City of Hamilton staff, July 9, 2014.



Figure 12: Detail view of decorative stone elements over main entrance doorway.





Figure 13: Representative brick panel detail, northwestern corner.



Figure 14: Detail view of decorative stone elements atop brick parapet.





Figure 15: Side entrance on east elevation. City of Hamilton staff, July 9, 2014.





Figure 16: Detail view of entryway. City of Hamilton staff, July 9, 2014.



Figure 17: Detail view of Boy's entryway.





Figure 18: Contextual shot of subject property looking northeast from the mountain (City of Hamilton staff, October 22, 2024).



Figure 19: Overhead view of subject property (Google Earth, retrieved October 2024).





Figure 20: W.H. Ballard School, no date (Black Mount Collection, Local History & Archives, Hamilton Public Library)



Figure 21: Central Auditorium in 1924 (*Contract Record and Engineering Review*, December 1924)





Figure 22: Central two-storey auditorium with skylight.



Deep trusses concealed in the partitions above the auditorium are an economical feature of the design

Figure 23: Covered light well and steel trusses supporting third storey classrooms, 1924  
(*Contract Record and Engineering Review*, December 1924)





Figure 24: Covered light well and steel trusses supporting third storey classrooms.

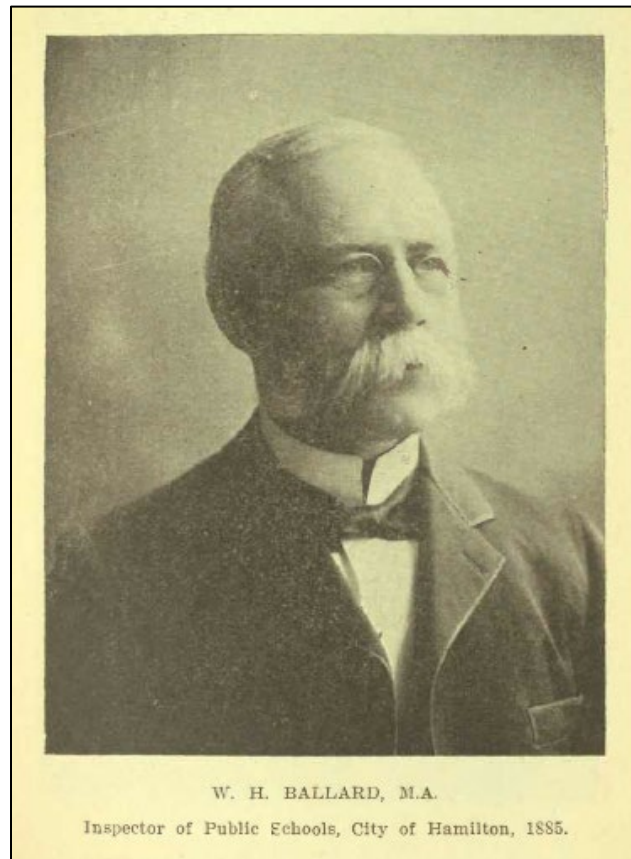


Figure 25: Dr. William Henry Ballard (1845-1934) (*The Establishment of Schools and Colleges in Ontario, 1792-1910, Volume 1*)