



Hamilton

# TEMPORARY EMERGENCY SHELTER EXPANSION – IMPLEMENTATION UPDATE

April 9, 2025

## August 6, 2024

**Mayoral Directive to Staff (MDI-2024-02)** - issued to identify options for procuring and implementing temporary shelter structures in Hamilton, covering cost assessments, funding sources, vendor selection, and site feasibility.



## October 2024 - January 2025

Full implementation of recommendations; 272 new temporary shelter spaces combined through Temporary Barton Tiffany Shelter (TBTS) and other locations around Hamilton.



## February 2025

TBTS begins phased opening, providing safe, low-barrier shelter spaces, with coordinated intakes prioritizing unhoused residents from encampments, including couples and those with pets.

## September 25, 2024

**HSC24027(b) / FCS24028 / PED24162** - Reducing Homelessness and Managing Encampments.



## January 2025

All 192 temporary emergency shelter beds are fully operational, expanding Hamilton's emergency shelter system to better meet the needs of unhoused residents and respond to encampments.



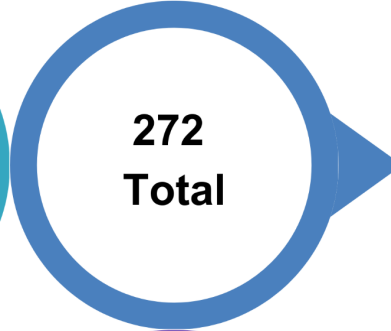
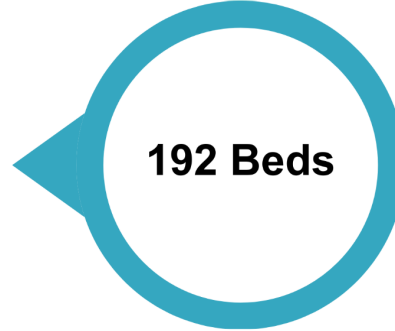
# Temporary Shelter Expansion

## Temp. Beds Now Open

Expanded capacity across multiple providers to respond to increased need in the community and provide more flexibility in available shelter options.



**TBTS**  
Temporary Barton Tiffany Shelter (TBTS) now fully operational, prioritizing encampment residents, couples, and those with pets.

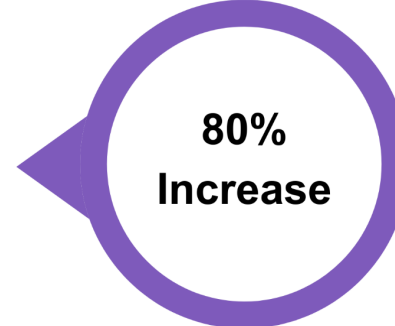


## New Beds Added

Largest single shelter expansion in Hamilton's history, providing immediate relief to the system and expanding options.

## Shelter Capacity

Significant coordination has occurred across multiple City departments and community partners to implement critical expansions to Hamilton's emergency shelter system, strengthening supports for unhoused residents and reducing encampment pressures.



# Collaboration



Cross-departmental collaboration between Housing Services, Public Works, and Planning & Economic Development was key to delivering critical shelter solutions.



City teams and community partners worked together to develop safe, functional shelter spaces that meet the needs of residents.



Strong partnerships with community partners / shelter providers, Housing Services and the City's Outreach Team ensured a coordinated, supportive approach.

# 192 Temporary Shelter Bed Expansion

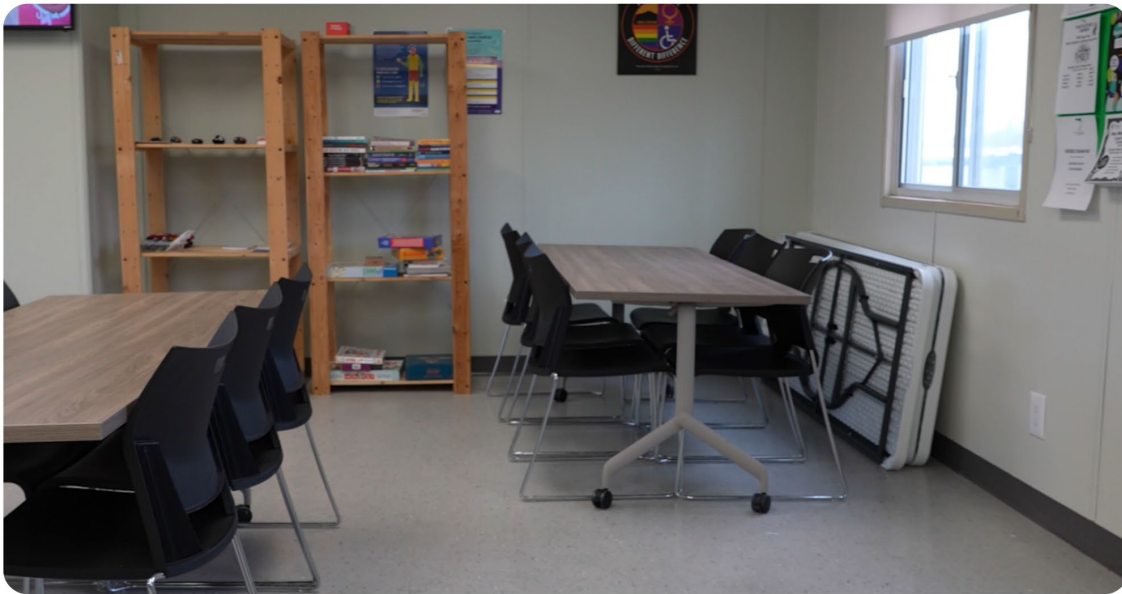
- 192 new spaces added to support men, women, and gender-diverse individuals, expanding capacity across multiple providers to ensure access to emergency shelter and specialized supports.
    - 45 spaces offered through Interval House, YWCA, Mission Services, and Good Shepherd,
    - 82 spaces offered by Good Shepherd, Salvation Army, and Mission Services,
    - 20 provided by Wesley; and,
    - 45 asylum beds expanding the Wesley asylum seekers temporary housing program, creating 45 spaces within existing emergency shelters for those residents requiring higher level of supports.
- 



# Temporary Barton Tiffany Shelter (TBTS)

- 80 bed shelter now operational
- Prioritized for Encampment residents, couples, and those with pets
- Operated by Good Shepherd, providing 24/7 staffing and on-site supports

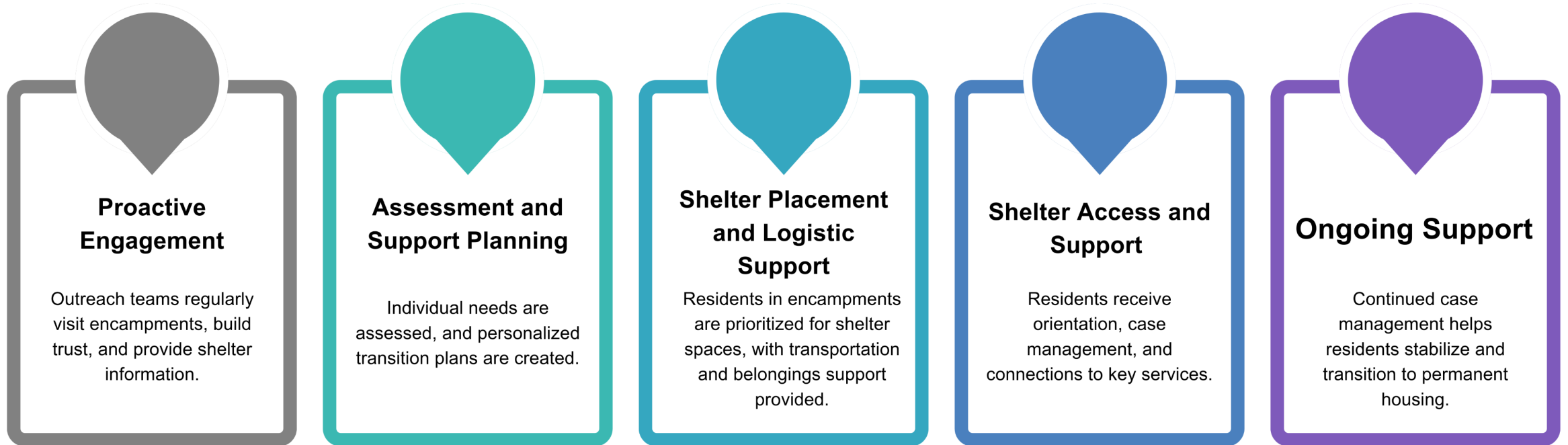




- Video Placeholder Slide



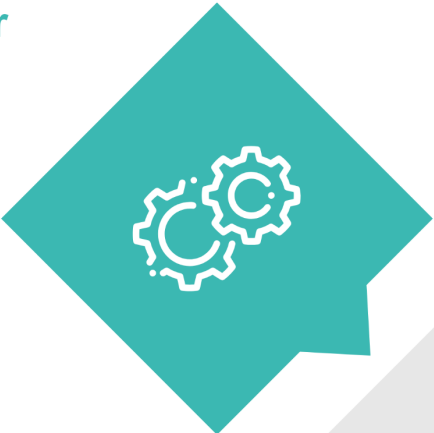
# Referral and Transition Process



# Community and Systems-Level Impacts

## Encampment & Shelter System Impacts

- Increased shelter capacity has helped transition encampment residents into safe, managed spaces.
- Reduction in the size and number of encampments, alleviating pressure on emergency services.



## Balancing Immediate & Long-Term Needs

- Emergency shelters remain a critical, flexible response to meet evolving needs.
- Long-term focus on permanent housing solutions while maintaining a responsive shelter system.



## Ongoing Monitoring & Evaluation

- Tracking shelter occupancy, encampment trends, and service needs to assess effectiveness.
- Identifying opportunities for service improvements and ensuring continued resident support.



## Collaboration & Service Integration

- Ongoing partnerships with community agencies to support housing-focused interventions.
- Strengthening connections to mental health, addiction, and supportive housing services to improve long-term outcomes.



# NEXT STEPS

Reinforcing permanent housing as the priority, while ensuring shelter and broader housing system level flexibility to respond to evolving needs

## Q2 2025: TBTS Report to Council

Review of TBTS implementation, procurement process, budget analysis, and lessons learned.



## Q2 2025: System Expansion Report

Separate report to Council on permanent shelter system expansion, evaluating long-term needs, funding requirements, and service capacity.



## Ongoing Monitoring & Evaluation

Tracking shelter occupancy, encampment trends, and service impacts to assess effectiveness and guide future improvements.



## Advocacy & Engagement

Continued collaboration with senior government partners to secure sustainable investments in shelter, supportive housing, and homelessness prevention.





Hamilton

THANK YOU