



Hamilton

# PRIVATE TREE BY-LAW REVIEW

APRIL 29, 2025



**URBAN  
FOREST  
STRATEGY**  
LEGACY STARTS AT THE ROOTS

**PUBLIC WORKS  
ENVIRONMENTAL SERVICES**

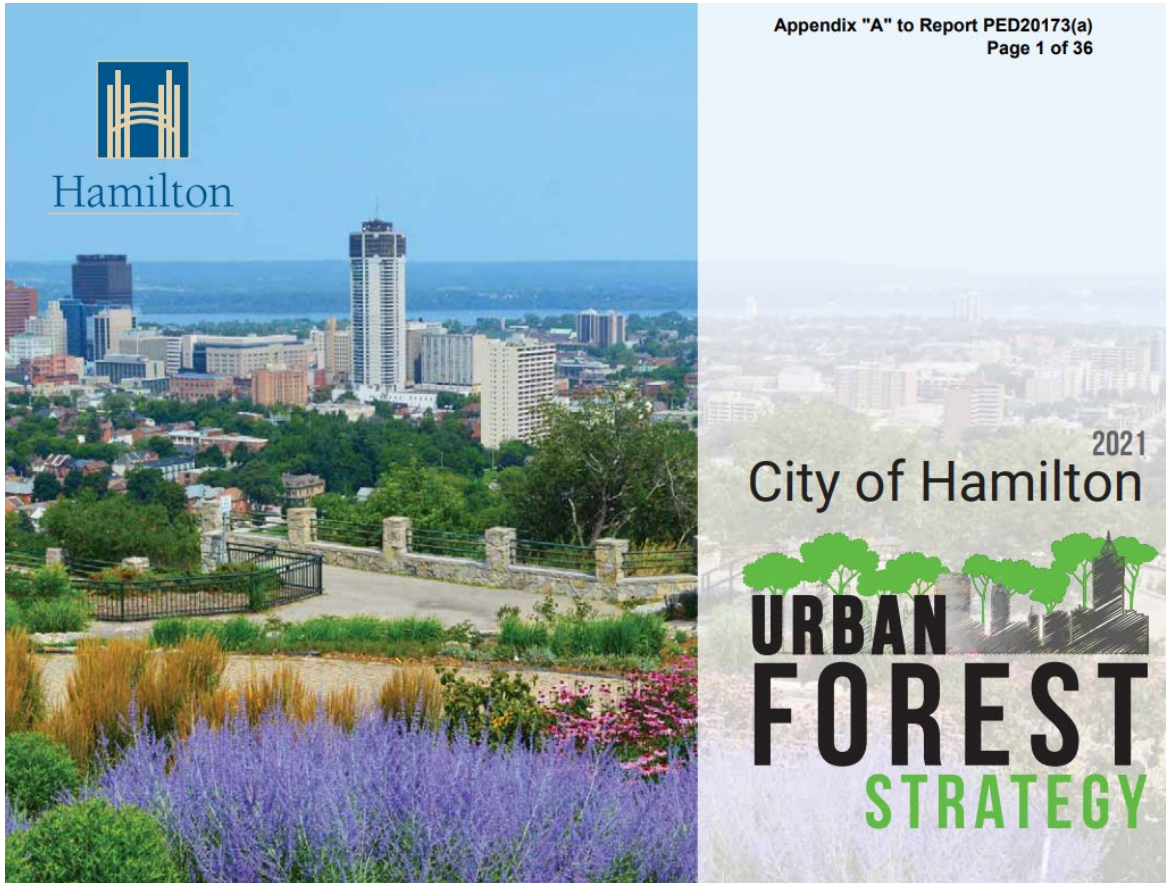
# LAND ACKNOWLEDGEMENT

The City of Hamilton is situated upon the traditional territories of the Erie, Neutral, Huron-Wendat, Haudenosaunee and Mississaugas. This land is covered by the Dish With One Spoon Wampum Belt Covenant, which was an agreement between the Haudenosaunee and Anishinaabek to share and care for the resources around the Great Lakes. We further acknowledge that this land is covered by the Between the Lakes Purchase, 1792, between the Crown and the Mississaugas of the Credit First Nation.

Today, the City of Hamilton is home to many Indigenous people from across Turtle Island (North America) and we recognize that we must do more to learn about the rich history of this land so that we can better understand our roles as residents, neighbours, partners and caretakers



# BACKGROUND



- Mandate received from the Urban Forest Strategy (PED20173(a)) (City Wide Urban Area)
- Approved by Council in June 2023
- Overall goal: increase canopy cover to 40% for the **urban boundary** by 2050 (2017 canopy cover: 21%\*)
- Themes: Inspire, Act, Protect, Grow, Adapt

# PUBLIC ENGAGEMENT

- Public Consultation occurred in 2021
- Online survey completed for private tree bylaw

**Do you think Hamilton should update its private tree by-laws to have consistent regulations across the urban area?**

Yes



No



Total Votes : 143

# DEFINITIONS

## What is the Urban Forest?

- The Urban Forest includes all publicly and privately-owned trees and supporting vegetation in the **urban boundary**.

## What is Tree Canopy Cover?

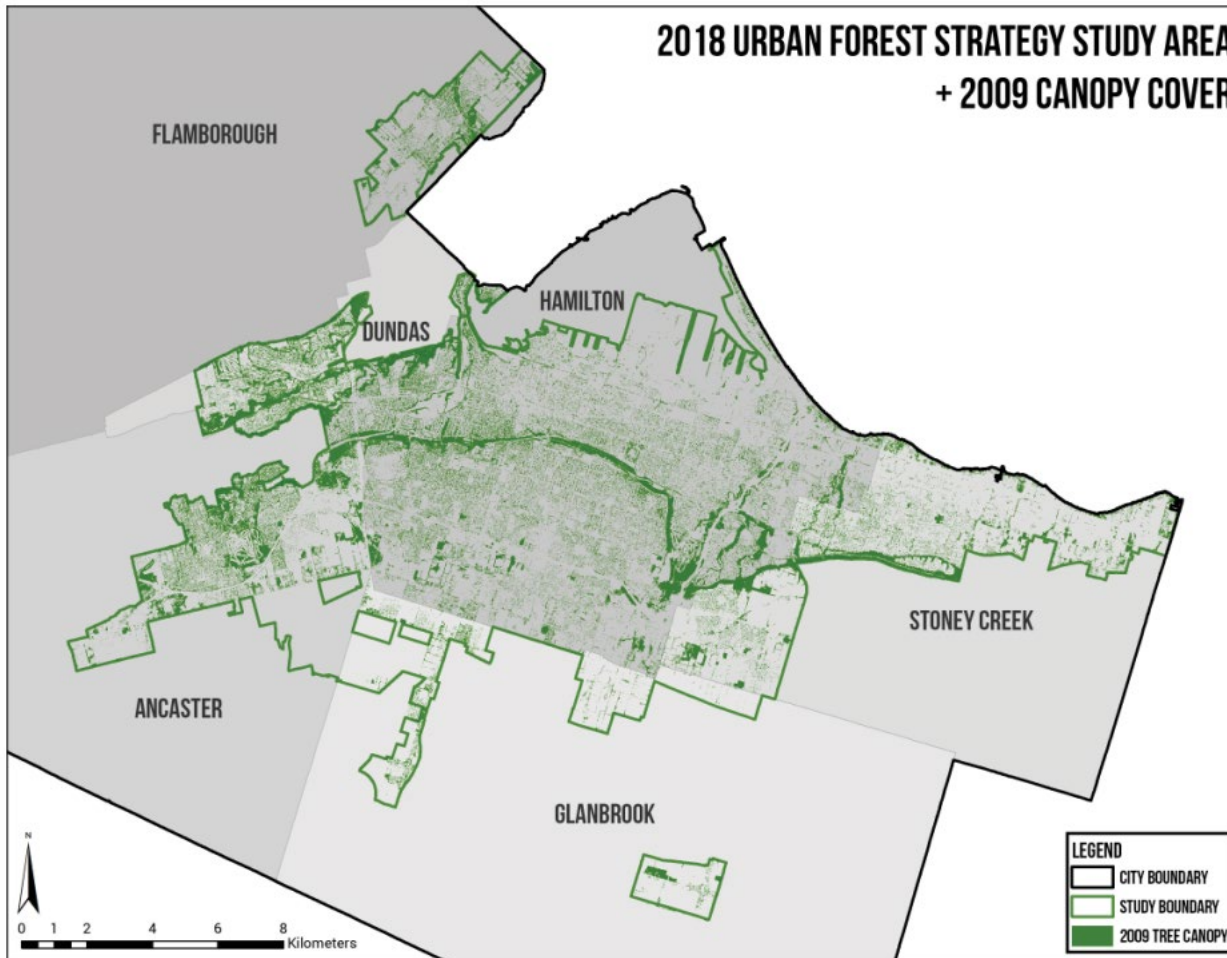
- Canopy cover represents the amount of land area covered by individual trees and woodlands as seen from above.

LAND USE CATEGORY	HAMILTON	OAKVILLE (2015 Study)	LONDON (2012 UFSMP)	MISSISSAUGA (2011 Technical Report)	NEWMARKET (2016 Study)	TORONTO (2018 Study)
Commercial	5.6	6.3	10	6	11	8
Industrial	2.3	N/A	12	5	11	8.7
Low Density Residential	18.6	44.2	27	20	27	33.2
Medium/High Density Residential	15.5	22.1	19	19	27	23.8
Parks/Open Space	54	64.6	55	44	53	58.3
Institutional	10.9	N/A	18	14	n/a	22

# DEFINITIONS

## What is the Urban Boundary?

- The urban boundary defines the area where all urban development occurs
- Some areas within the urban boundary are not currently urbanized



# PRIVATE TREE BY-LAW REVIEW PROCESS

## Goal:

- Harmonize and consolidate current private tree by-laws and protect urban canopy

## Phase 1

- Background review
- Municipal review
- **Initial engagement** ←
- Prepare draft bylaws and revised tree protection guidelines
- Submit draft report to Council

## Phase 2

- Public consultation
- Public meetings
- Draft final report
- Seek Council approval

\*\*Scope also includes the review and update of the City's existing woodland bylaws, and tree protection guidelines



# CURRENT STATE

## Existing Private Tree By-laws (Pre-Amalgamation)

- Stoney Creek Tree Bylaw
- Dundas Tree Bylaw
- Ancaster Heritage Tree Bylaw

## Existing Woodland Bylaws

- Regional (rural) Woodland Bylaw and Urban Woodland Bylaw

## Existing Tree Protection Guidelines





# SEEKING FEEDBACK

Current State	Strengths	Opportunities
	Aspirations	Results



THANK YOU



**URBAN  
FOREST  
STRATEGY**  
LEGACY STARTS AT THE ROOTS

**PUBLIC WORKS  
ENVIRONMENTAL SERVICES**