



**HAMILTON-  
WENTWORTH**  
DISTRICT  
SCHOOL  
BOARD

Presentation to the City of Hamilton

Emergency and Community Use Committee

March 1 2011

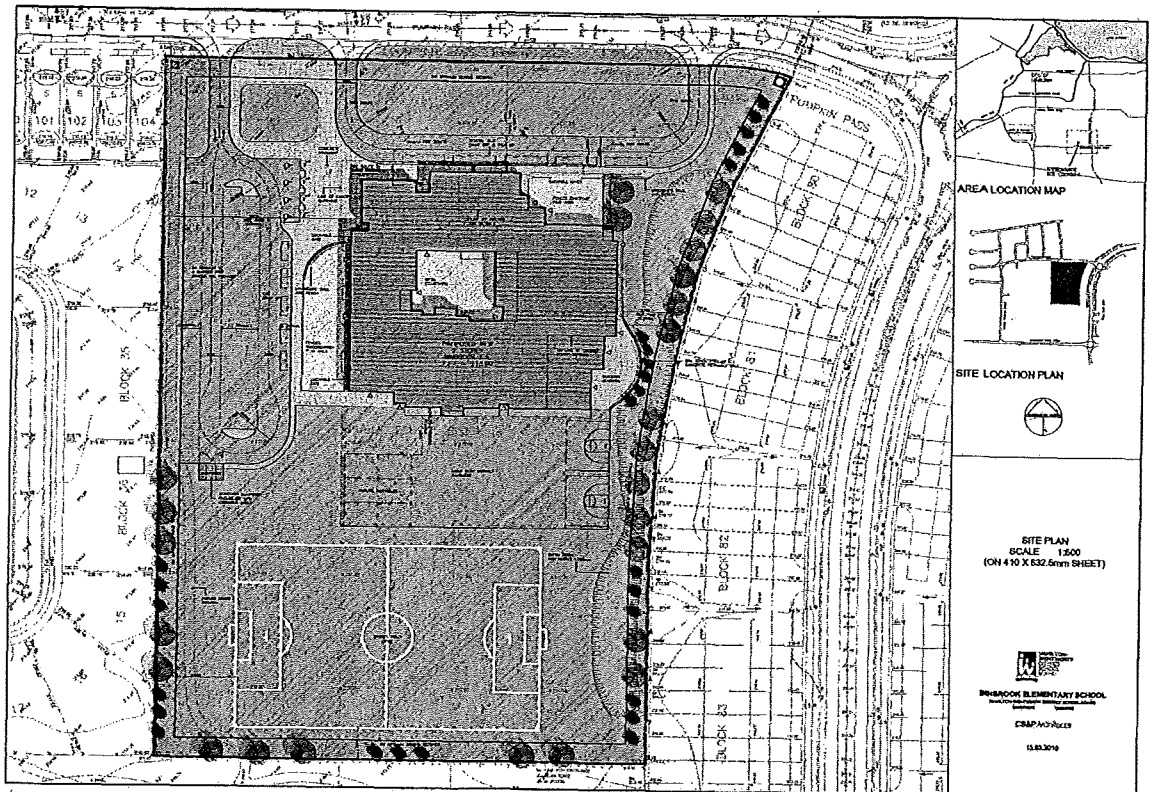


**Total cost of Parkland Dedication Fees paid by HWDSB since 2003:**

Ray Lewis	\$ 61,500.00	new school
Dr. Davey	\$ 24,324.89	replacement school
Sir William Osler	\$125,000.00	new school
Guy Brown	\$ 89,754.00	replacement school
Ancaster Meadow	\$ 64,400.00	new school
Lawfield	\$ 22,089.00	replacement school
Prince of Wales	\$ 28,625.00	replacement school
Queen Victoria	\$ 41,685.00	replacement school
Binbrook	\$150,000.00	new school
<u>TOTAL</u>	<u>\$607,377.89</u>	

## Comments on Parkland Dedication Fees paid:

- ✓ Fees included those paid for replacement schools: e.g. Queen Victoria, Lawfield., Dr E.Davey,
- ✓ Fees were paid first by the developer for the land, or in lieu of parkland dedication fees, and then further by HWDSB to the City when bought from the developer example: Binbrook



### Binbrook Elementary School

Lot Area	8.01 Acres	3.24 Hectares	32,397 sqm
Landscape Area	4.0 Acres	1.67 Hectares	16,653 sqm

Slide 2

\_MG\_8418b.jpg



**Binbrook Elem. School**  
**8.01 Acres**

**Park Land**  
**5.00 Acres**

**Green Space**

HWDSB Presentation To The City of Hamilton  
Emergency and Community Use Committee

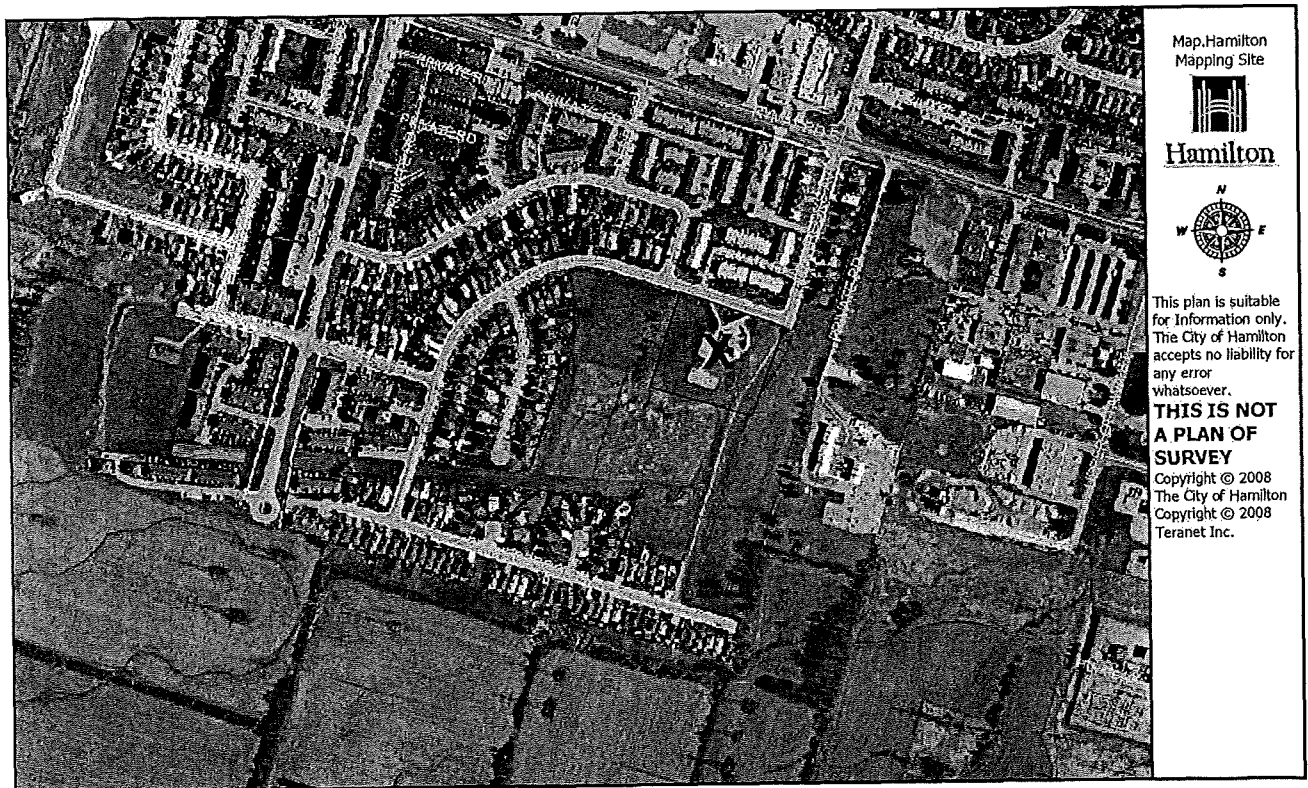
**March 01, 2011**

Slide 2

## Use of HWDSB's land by the City

- ✓ As parkland : example Broughton park
- ✓ City owned play structures
- ✓ City maintained ball park diamonds, tennis courts, soccer fields
- ✓ Included in City's Outdoor Recreation study
- ✓ City rents out HWDSB playing fields

Note: HWDSB is not funded to provide and maintain sports fields and play structures



400 m

### Broughton East HWDSB Vacant Property

1 Acre used by City Of Hamilton for splash pad.

Slide 3

# Base-ball diamonds

James MacDonald School Site



15 Acre Site  
3 Baseball Diamonds used by City Parks & Recreation

March 1 2011

Slide 3

## Informal Use of HWDSB's land by the public

- ✓ All HWDSB properties are open to the public
- ✓ For site plan approval , fencing is required by the city, but properties are not gated and locked
- ✓ Most school yards have creative play structures; these are used by the public after school hours
- ✓ Basketball nets are used by the public after school hours
- ✓ Fields and Playgrounds are used for informal play activities and for walking the dog.



## Formal Use of HWDSB's land by the public:

The following 34 groups were granted permits **at no cost** or rented through the City to use HWDSB fields between May 1 and August 31 2010

Hamilton Ultimate Club	Quindale Community Group	Dundas Youth Soccer Club
Hamilton Special Olympics	West Hamilton Soccer Club	Gursik Sangrat (Religious Festival)
Hamilton Touch Football Association	Hamilton Hurricanes	Hamilton Slo-Pitch
NSA Canada – local chapter	SCMABA	Small Industrial Slo- Pitch
Stoney Creek Slo-Pitch	Stoney Creek Soccer Club	St . Demetrios Greek School
Berrisfield Community Council	Stoney Creek Rugby Football*	Husky Multi Sports Camp
Saltfleet Go=Ahead Soccer	Flamborough Soccer Association	Canusa Games
Ancaster Youth Soccer Club	St Michael School	Eva Rothwell Resource Centre
Battlefield Babe Ruth League	Reach Forth Ministries	Saltfleet Soccer U17 Girls
Hamilton Minor Football Association	Hamilton Central Slo-Pitch	HWCD SB
Golden Youth Soccer Camp	Hamilton Rep Baseball	Gilkson Park Community
East Hamilton Soccer		

Schools whose playing fields were used formally in the summer using permit system from HWDSB by 20 groups ( 2010 figures) at no cost

- ✓ 9 High Schools with playing fields except for Hill Park, Sir Alan McNab, Sherwood, Barton and Glendale
- ✓ 14 elementary schools
- ✓ Schools used are from all parts of the City

The City also has rental agreements for HWDSB playing fields:

- ✓ In 2010 rentals were for a total of **4,482.50** hours of use, 953.50 for adults and 3,529 for youth
- ✓ A total of 15 schools were involved, 8 of which are high schools including Sir Alan McNab, Hill Park and Sherwood
- ✓ 6 soccer clubs, 2 community councils, 4 slo-pitch associations, the Canusa Games, Special Olympics, rep baseball, touch football, and minor football were some of the 21 renters
- ✓ R.A.Riddell public school was the most used; the Gilkson Community rented the field for 1,539 hours
- ✓ Large number of young people involved. For example, 400 Stoney Creek Slo-Pitch Association members

## Double dipping:

- ✓ City receives Parkland Dedication fees from developer and then from HWDSB for same property
- ✓ HWDSB allows use of property by the public: all yards are open to the public
- ✓ HWDSB allows City to use HWDSB land without a school, as a park
- ✓ HWDSB allows City to place structures such as baseball diamonds, creative play structures, tennis courts for public use on HWDSB land
- ✓ HWDSB provides free permits for playing field use
- ✓ HWDSB has 34 public groups using its property in the summer
- ✓ HWDSB lands were included in City Green Space study

But HWDSB is still charged Park Dedication Fees