

BOH12002 Appendix A



Hamilton

**Public Health Services
Rural Well Water Quality
Report**

What is the report about?

- For rural residents of Hamilton who obtain their drinking water from a private water well.
- Focus is on health related factors; bacteria and chemical parameters that have been detected in well water at levels near or above the Provincial Drinking Water Standards.
- Information regarding well water quality; what tests well users should consider to assess their well water quality.
- Information regarding how to test well water quality, well maintenance, and a list of sources of well information.



Hamilton

Where did we get our information?

- Test results for 50 drinking water systems regulated under the Safe Drinking Water Act;
- ~200 drinking water systems regulated under the Health Protection and Promotion Act;
- 14 wells in the Ministry of Environment's Provincial Groundwater Monitoring Network (PGMN).
- >31,000 well water samples tested for bacteria between 2004 and 2011.



Hamilton

Bacteria Testing

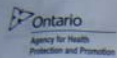
- It's Free!
- Should be done several times per year.
- Sample bottles can be obtained at 16 locations.
- Samples can be dropped off at 10 locations.
- Between 2004 and 2011 >31,000 water samples tested for bacteria;
 - 1 out of 4 well water samples were unsafe for drinking.
 - 3% to 7% of well water samples had E.coli detected.



Hamilton



70868


 Ontario
 Agency for Health Protection and Promotion

Public Health Laboratories

Bacteriological Analysis of Drinking Water for Private Citizen, SINGLE HOUSEHOLD ONLY

IMPORTANT

The form must be **COMPLETE AND ACCURATE** when received at the laboratory. If any areas filled in or the water **WILL NOT BE TESTED** and another sample with a completed form must be submitted.

Instructions: Please read carefully before sampling. See the back of the instruction sheet for your records.

This checklist is provided to help you successfully collect and submit your sample.

In order for the laboratory to test your sample it must be:

<input type="checkbox"/> Drinking water *	<input type="checkbox"/> From a single household
<input type="checkbox"/> Submitted with completed form *	<input type="checkbox"/> Collected in bottle
<input type="checkbox"/> Filled to the fill-line on bottle	<input type="checkbox"/> Received at lab within 24 hours
<input type="checkbox"/> Cold (i.e. < 25°C) *	<input type="checkbox"/> Aesthetically acceptable
<input type="checkbox"/> Taken from a location in Ontario	<input type="checkbox"/> Received without delay

a. If you are using surface water as your source of drinking water it must be treated first. Untreated surface water will not be tested.

b. "Single household" is potable water from any source which is protected from surface or groundwater by a regulated drinking water system (i.e. a system that serves the public) or from a commercial bottled water product.

c. **ALL shaded areas of the original requisition must be completely and accurately filled in by the submitter.** Laboratory staff is NOT ABLE to phone you to obtain information that is missing and CANNOT alter the shaded portion of the form once it is received. If possible, please also fill in the Emergency Locator #, County, Postal Code and the 4-digit Health Unit number. The laboratory requires all copies of the form and please make sure the information can be read on all copies.

d. The "name tag" applied to the Ontario Agency for Health Protection and Promotion water collection bottle must match the "Name" in the return address on the form. Sample bottles can be obtained from any Public Health Laboratory or Public Health Unit. Please do not cover barcodes on the bottle. Do not use the bottle if the ring does not detach from the cap when opened.

e. If the sample cannot be transported immediately, keep it in the refrigerator until it can be transported in a cooler with frozen ice packs to the drop off location. Do not freeze sample or collect from the "hot" tap.

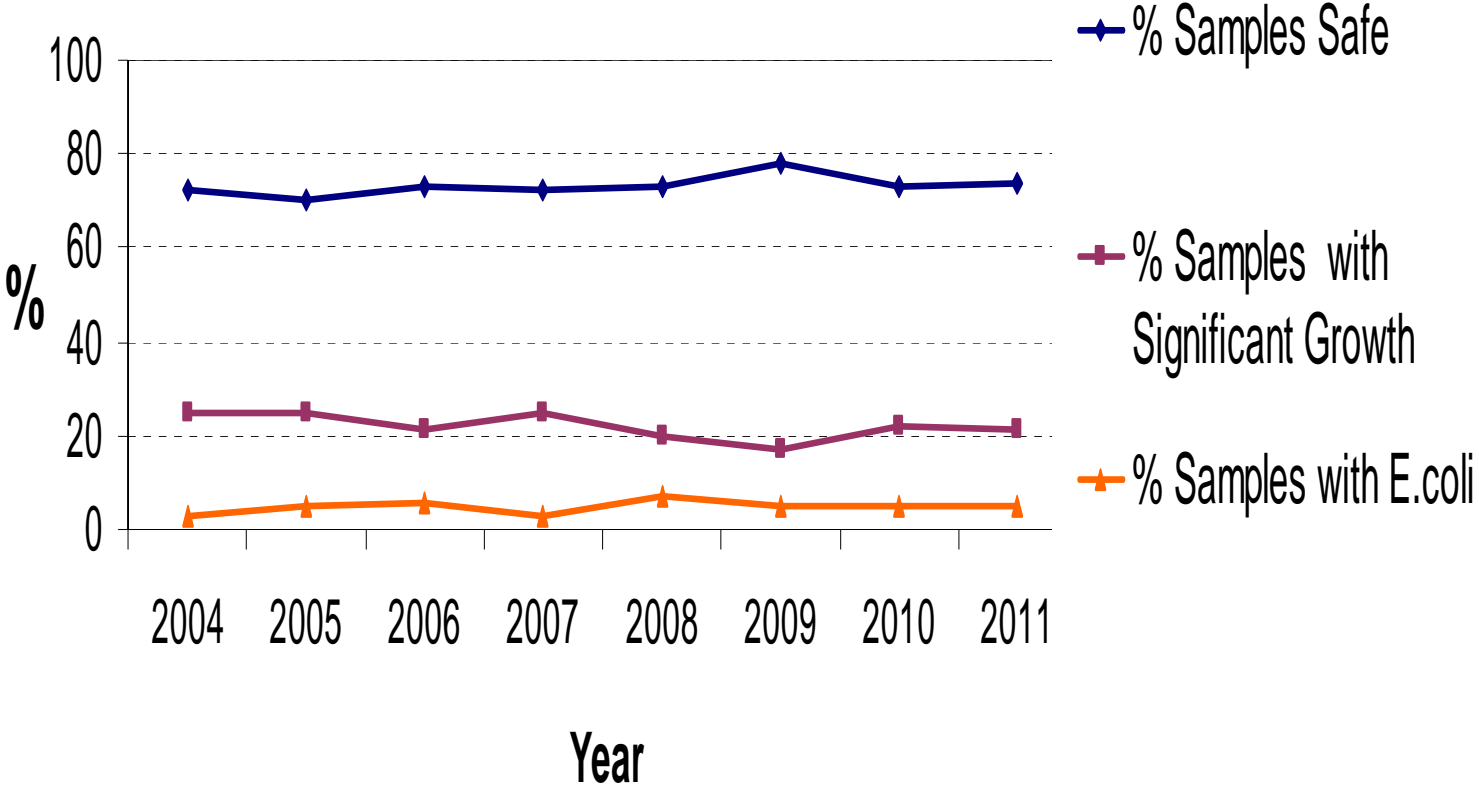
f. The water has no smell, contains no debris and is clear and colourless and does not contain substance that interfere with the test.

Voir au verso pour renseignements en français.



Hamilton

Bacteria Test Results For Private Residential Wells



Chemicals

- All of the well-based drinking waster systems regulated under the Safe Drinking Water Act have been tested for at least 78 different chemicals.
- 14 wells in the Provincial Groundwater Monitoring Network have been tested for 204 different parameters.
- PHS tested ~100 wells for the chemicals detected near or above the Drinking Water Standards in the PGMN and Safe Drinking Water Act wells.



Hamilton

Chemicals...continued

- Detection of health related chemical parameters above the ODWS is limited to; Sodium, Nitrates, Lead, Fluoride, and rarely Barium.
- Barium and Fluoride are naturally occurring.
- Lead can be naturally occurring or due to old lead pipes.
- Sodium and Nitrates can be naturally occurring, but it is suspected that the source is likely road salt (Sodium) and agriculture, fertilizer, and private sewage systems (Nitrates).
- No other chemicals, pesticides or radiological parameters have been reported to PHS above the Drinking Water Standards.





Hamilton

Eric Mathews
Ext 2186