

Royal Botanical Gardens Rock Garden Rejuvenation

Rock Garden Rejuvenation

- \$20M project
- \$14M in funding from Provincial and Federal funds
- Balance to be raised by RBG
- Project has been in the works for many years.
- Rock garden is where RBG started. Built during the Great Depression as part of T.B. McQuesten's vision of a grand entrance to the City of Hamilton
- Garden in much need of repair and a boost!

Rock Garden Rejuvenation

- Return to glory days where it was a “must see” spot for all visitors to Hamilton
- Assist RBG in new self generated revenues
- Phase One of a master plan for the Garden
- Opportunity to deal with aging infrastructure
- Leaking ponds; irrigation water and sewer
- Address visibility along York Blvd.
- Address legislated accessibility requirements
- Maintain historic importance and interest

Rock Garden Rejuvenation

- Very aggressive time lines associated with funding agreement
- Design is well along and some preliminary repair work has taken place as we prepare for site plan approval.
- Currently working with City staff in trying to expedite approvals
- Two major challenges – zoning and services to the site
- One aging 4” line, no sewer, no gas

Rock Garden Rejuvenation

- RBG is looking for assistance with improving the servicing situation, in particular the water service
- RBG would also like to showcase this project as “Gateway” to the City for those travelling from the north east.
- RBG is looking for assistance to do so by improving the existing signalized intersection on York Blvd. while providing improvements to the safety of vehicles, bikes and pedestrians.

Rock Garden Rejuvenation

- In 2009, Halton Region contributed \$750K towards a new entrance off of Plains Road to RBG Centre. Part of a \$16M expansion
- In 2013, RBG is asking our other core funder the City of Hamilton, for similar assistance.
- Water service - \$500K to \$1.4M
- Intersection / Gateway improvements \$350K
- Completion, spring of 2015 and Pan Am Games!
- Thank you for your consideration.

Hedge to Screen
Service Route
Stone Walls

New Display Beds
New Pathways

Display Beds
Expanded Water Feature
Accessible Route

Accessible Entry
to Washrooms
Existing Tea House

Parking & Drop-off Loop

Sculpture Garden
& Event Space

Visitor Centre

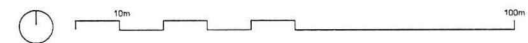
Main Entrance to Visitor Centre
Site Signage

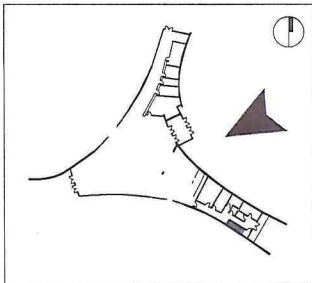
Outdoor Patio

Entry to Existing Parking
Pedestrian Crossing

Evergreen Hedge

Existing Paths on Slope





KEY PLAN

VISITOR CENTRE
ELEVATION FROM
THE MAIN ENTRANCE

ROYAL BOTANICAL GARDENS
ROCK GARDEN

13 AUGUST 2013

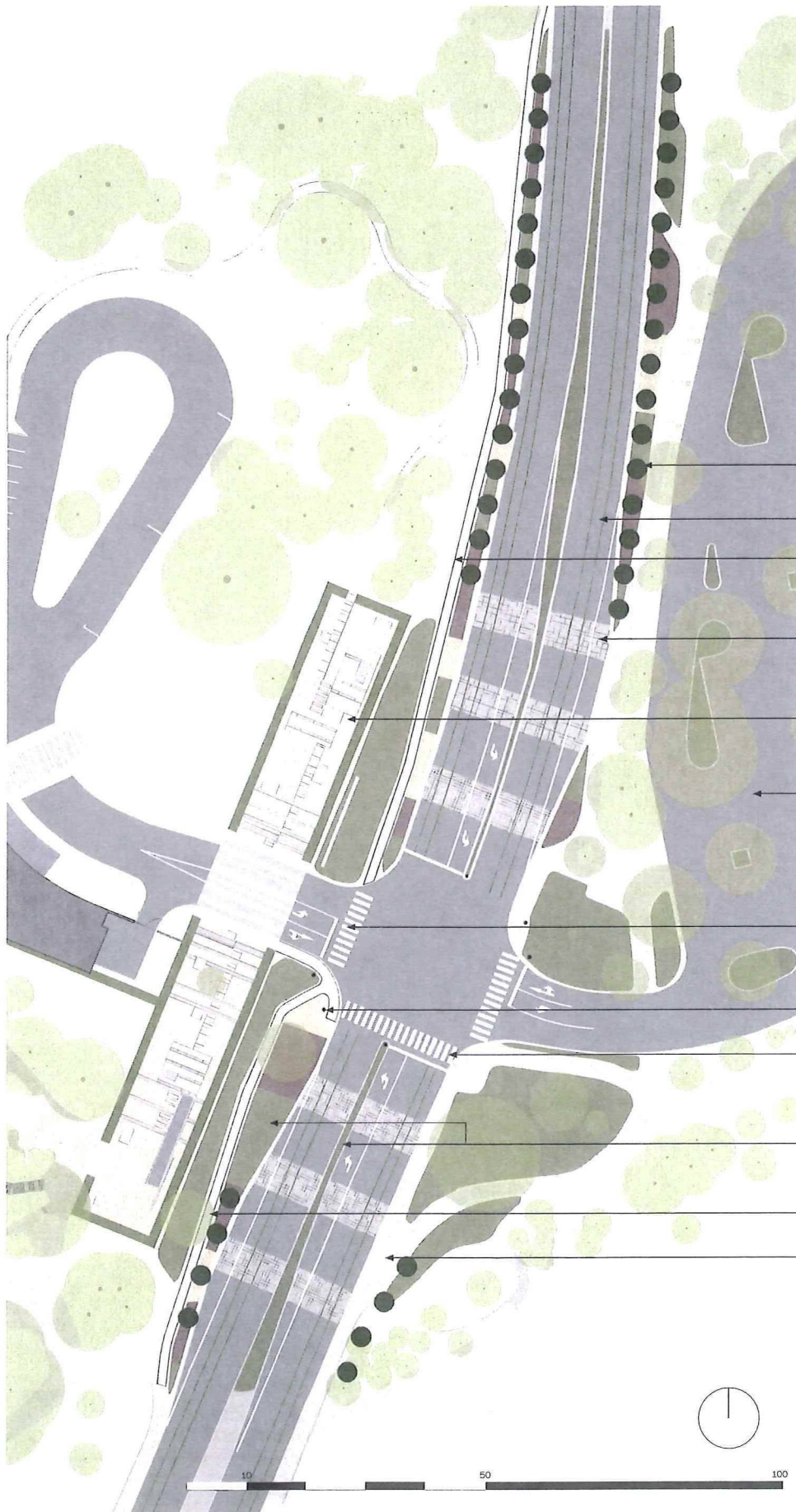
CS&PArchitects



Rock Garden: Royal Botanical Garden

ENTRY COURTYARD

CS&P
Architects + Janet
Rosenberg
& Studio



Street trees
to mark arrival

Existing bike lane

New sidewalk

Optional
pavement banding

Hedged
sculpture garden

Existing parking lot

New driveway entrance

New/ relocated
traffic lights

New crosswalks
painted lines or paved

Optional boulevard/
median planting

New sidewalk

Existing sidewalk



Royal Botanical Gardens
Rock Garden Gateway

Janet
Rosenberg
& Studio